

SDA 3.5: Means

United States 1850-2014

Jul 21, 2016 (Thu 09:54 PM CDT)

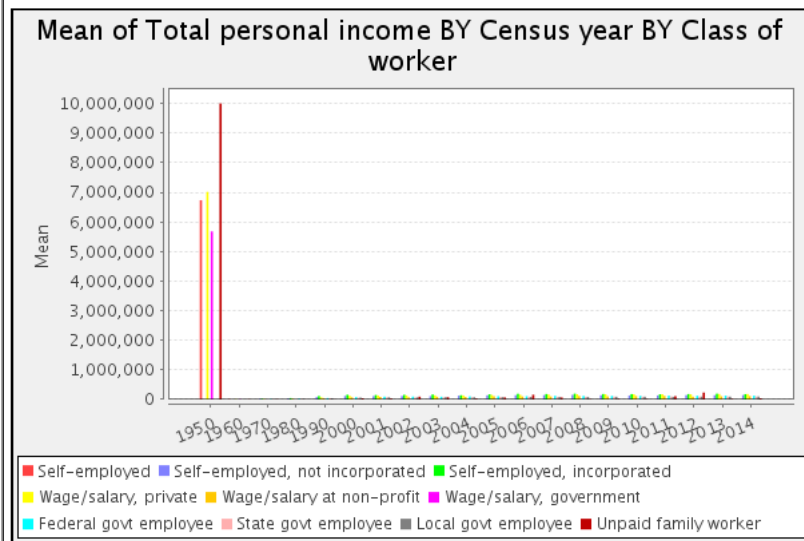
Variables					
Role	Name	Label	Range	MD	Dataset
Dependent	inctot	Total personal income	-20000-9999999		1
Row	year	Census year	1850-2014		1
Column	classwkrd	Class of worker	0-29		1
Control	race	Race	1-9		1
Weight	perwt	Person weight	.00-4,044.00		1
Filter	empstat(1)	Employment status(=Employed)	0-3		1
Filter	occ1990(178)	Occupation, 1990 basis(=Lawyers)	3-999		1

Statistics for race = 1(White)											
Cells contain: -Means -SRS Std Errs -Weighted N		classwkrd									
		10 Self- employed	13 Self- employed, not incorporated	14 Self- employed, incorporated	22 Wage/salary, private	23 Wage/salary at non-profit	24 Wage/salary, government	25 Federal govt employee	27 State govt employee	28 Local govt employee	29 Unpaid family worker
year	1950: 1950	<b>6,730,320.83</b> 141,379.109 104,469.0	---	---	<b>7,013,700.29</b> 213,996.804 45,114.0	---	<b>5,676,658.84</b> 300,773.232 28,641.0	---	---	---	<b>9,999,999.</b> 16:
	1960: 1960	<b>13,153.02</b> 215.517 131,301.0	---	---	<b>10,926.49</b> 330.446 42,522.0	---	<b>10,429.80</b> 320.204 31,985.0	---	---	---	<b>8,541.</b> 5,223.9 39:
	1970: 1970	---	<b>25,283.07</b> 394.765 137,600.0	<b>24,674.10</b> 1,592.995 8,300.0	<b>17,272.91</b> 426.956 69,400.0	---	---	<b>15,068.34</b> 551.071 16,900.0	<b>14,698.91</b> 675.288 9,200.0	<b>12,783.07</b> 873.758 12,700.0	<b>7,300.</b> 6,733.1 30:
	1980: 1980	---	<b>38,474.66</b> 542.311 193,600.0	<b>47,132.29</b> 1,179.499 35,600.0	<b>27,530.51</b> 487.874 168,700.0	---	---	<b>27,761.10</b> 888.550 26,700.0	<b>22,343.54</b> 863.034 24,000.0	<b>22,543.19</b> 820.449 26,300.0	<b>2,182.</b> 177.5 20:
	1990: 1990	---	<b>81,472.47</b> 1,203.120 206,433.0	<b>115,969.55</b> 2,616.072 75,310.0	<b>73,094.33</b> 1,108.824 293,358.0	<b>47,163.06</b> 2,772.317 16,771.0	---	<b>49,585.43</b> 1,814.679 27,083.0	<b>44,171.00</b> 1,282.382 33,083.0	<b>44,081.33</b> 1,299.115 34,700.0	<b>4,741.</b> 4,636.4 74:
	2000: 2000	---	<b>117,901.54</b> 2,204.656 221,677.0	<b>159,204.51</b> 3,842.618 108,181.0	<b>123,622.82</b> 1,969.491 323,952.0	<b>73,777.28</b> 4,388.752 19,302.0	---	<b>79,052.35</b> 2,394.861 31,770.0	<b>61,227.53</b> 1,822.496 43,358.0	<b>64,493.72</b> 1,973.987 39,694.0	<b>43,394.</b> 27,056.8 64:
	2001: 2001	---	<b>112,869.35</b> 2,462.926 206,328.0	<b>149,899.01</b> 4,993.901 110,399.0	<b>134,781.97</b> 2,882.722 327,402.0	<b>87,207.12</b> 7,265.426 21,257.0	---	<b>95,022.21</b> 3,095.114 25,425.0	<b>69,609.51</b> 3,360.772 40,853.0	<b>75,953.65</b> 2,548.596 47,901.0	<b>34,975.</b> 5,699.5 62:
	2002: 2002	---	<b>116,018.32</b> 2,671.787 203,619.0	<b>156,715.26</b> 5,575.643 115,698.0	<b>137,108.24</b> 3,150.264 311,375.0	<b>76,770.42</b> 5,022.578 17,733.0	---	<b>98,666.92</b> 3,817.593 38,330.0	<b>68,187.26</b> 3,560.612 44,647.0	<b>70,274.50</b> 2,918.156 41,435.0	<b>95,891.</b> 14,512.0 71:
	2003: 2003	---	<b>114,716.61</b> 2,509.724 189,230.0	<b>166,464.23</b> 5,231.595 119,259.0	<b>138,650.22</b> 2,625.386 350,568.0	<b>92,750.43</b> 8,288.394 19,221.0	---	<b>93,830.69</b> 2,770.390 31,384.0	<b>70,195.47</b> 2,288.308 38,981.0	<b>79,849.73</b> 2,711.524 48,349.0	<b>76,251.</b> 35,858.7 1,20:
	2004: 2004	---	<b>129,083.79</b> 3,218.279 208,893.0	<b>143,644.44</b> 3,525.038 136,286.0	<b>136,213.50</b> 2,058.715 371,669.0	<b>86,941.05</b> 6,893.503 19,437.0	---	<b>104,136.75</b> 4,224.633 35,356.0	<b>78,220.80</b> 3,483.561 48,088.0	<b>76,128.12</b> 3,367.471 44,063.0	<b>29,259.</b> 11,867.1 75:
	2005: 2005	---	<b>139,366.17</b> 2,575.950 182,610.0	<b>174,609.52</b> 3,533.597 132,497.0	<b>152,468.35</b> 1,997.456 374,043.0	<b>111,062.26</b> 7,501.701 20,125.0	---	<b>109,559.27</b> 2,922.155 49,076.0	<b>87,663.03</b> 1,780.563 71,710.0	<b>81,903.75</b> 2,289.400 64,489.0	<b>68,944.</b> 20,372.5 31:
	2006: 2006	---	<b>143,911.53</b> 2,684.844 180,379.0	<b>192,620.61</b> 3,848.884 134,720.0	<b>158,426.85</b> 2,005.558 379,955.0	<b>101,945.26</b> 6,004.449 21,332.0	---	<b>109,899.32</b> 2,150.839 46,263.0	<b>89,481.88</b> 2,114.796 67,311.0	<b>86,491.01</b> 2,423.030 62,321.0	<b>160,274.</b> 62,237.7 32:
	2007: 2007	---	<b>146,616.21</b> 2,758.222 183,656.0	<b>184,825.03</b> 3,839.553 149,660.0	<b>167,215.77</b> 2,174.242 385,970.0	<b>102,162.21</b> 5,518.855 23,836.0	---	<b>119,355.66</b> 2,231.073 49,633.0	<b>89,618.82</b> 1,961.862 71,364.0	<b>89,128.88</b> 2,359.417 68,058.0	<b>68,249.</b> 26,157.7 88:
	2008: 2008	---	<b>154,504.19</b> 3,074.266	<b>196,426.58</b> 4,146.514	<b>178,940.04</b> 2,233.021	<b>118,744.84</b> 7,006.690	---	<b>115,955.22</b> 2,293.487	<b>91,556.17</b> 1,874.359	<b>88,179.82</b> 2,099.741	<b>15,562.</b> 5,305.4

2008	.0	177,552.0	135,039.0	421,736.0	23,857.0	.0	43,448.0	75,112.0	75,634.0	30	
2009:	---	<b>141,869.30</b>	<b>184,796.39</b>	<b>178,761.39</b>	<b>107,620.52</b>	---	<b>120,001.09</b>	<b>93,550.96</b>	<b>93,557.38</b>	<b>22,852.</b>	
2009	.0	2,835.296	3,993.262	2,178.325	5,524.899	.0	2,819.558	2,127.130	2,404.112	7,379.3	
	.0	166,213.0	136,995.0	421,300.0	26,854.0	.0	49,733.0	71,866.0	80,575.0	20	
2010:	---	<b>134,144.34</b>	<b>182,175.84</b>	<b>175,314.85</b>	<b>115,857.80</b>	---	<b>119,718.54</b>	<b>93,067.50</b>	<b>94,270.92</b>	<b>15,351.</b>	
2010	.0	2,626.661	3,544.293	2,091.931	5,788.304	.0	2,390.836	1,812.732	2,324.905	4,720.3	
	.0	171,441.0	136,302.0	399,444.0	23,106.0	.0	48,219.0	80,086.0	70,861.0	18	
2011:	---	<b>135,789.96</b>	<b>176,331.86</b>	<b>176,372.09</b>	<b>120,960.30</b>	---	<b>126,659.81</b>	<b>101,203.91</b>	<b>90,216.49</b>	<b>111,489.</b>	
2011	.0	2,820.338	3,674.334	2,079.195	5,847.662	.0	2,596.109	2,265.799	1,732.780	31,025.5	
	.0	162,750.0	142,100.0	411,874.0	26,668.0	.0	55,694.0	77,458.0	69,245.0	23	
2012:	---	<b>145,908.30</b>	<b>183,773.59</b>	<b>175,158.25</b>	<b>96,922.05</b>	---	<b>122,951.26</b>	<b>94,452.58</b>	<b>99,087.34</b>	<b>233,822.</b>	
2012	.0	2,988.587	3,656.000	2,075.051	4,593.775	.0	2,301.039	1,978.510	2,521.614	160,491.8	
	.0	169,616.0	145,862.0	410,697.0	29,711.0	.0	54,104.0	72,874.0	70,041.0	34	
2013:	---	<b>143,645.70</b>	<b>195,110.95</b>	<b>187,187.67</b>	<b>107,453.55</b>	---	<b>127,798.56</b>	<b>97,434.34</b>	<b>96,119.29</b>	<b>20,879.</b>	
2013	.0	3,081.124	4,155.128	2,269.957	4,741.207	.0	2,536.172	2,108.058	2,494.825	7,778.3	
	.0	160,866.0	143,052.0	438,517.0	29,622.0	.0	49,228.0	77,886.0	68,053.0	69	
2014:	---	<b>146,958.46</b>	<b>180,894.04</b>	<b>185,186.55</b>	<b>116,716.19</b>	---	<b>125,149.39</b>	<b>97,313.83</b>	<b>100,195.27</b>	<b>42,784.</b>	
2014	.0	3,271.380	3,843.684	2,240.810	5,303.786	.0	2,613.903	2,088.515	2,403.616	9,164.7	
	.0	154,904.0	145,368.0	457,154.0	29,161.0	.0	49,942.0	77,024.0	60,734.0	50	
<b>COL TOTAL</b>		<b>2,989,510.50</b>	<b>120,381.07</b>	<b>171,246.01</b>	<b>200,501.51</b>	<b>100,109.68</b>	<b>2,687,275.81</b>	<b>105,845.94</b>	<b>84,630.93</b>	<b>83,286.21</b>	<b>224,125.</b>
		92,917.814	630.339	995.044	2,947.304	1,494.532	181,881.859	708.429	561.380	612.660	147,669.3
		235,770.0	3,277,367.0	2,110,628.0	6,404,750.0	367,993.0	60,626.0	728,288.0	1,024,901.0	985,153.0	9,72

Color coding:	<-1.0	<-0.5	<0.0	>0.0	>0.5	>1.0	Z
Mean in each cell:	Smaller than average			Larger than average			

Chart for race = 1(White)



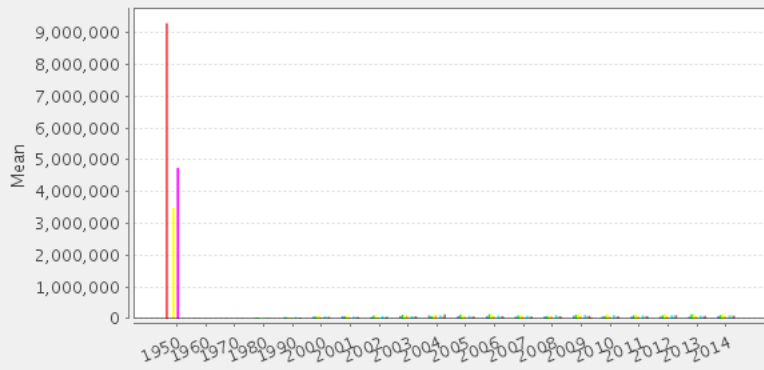
Statistics for race = 2(Black/Negro)										
Cells contain: -Means -SRS Std Errs -Weighted N		classwkrd								
	10 Self- employed	13 Self- employed, not incorporated	14 Self- employed, incorporated	22 Wage/salary, private	23 Wage/salary at non-profit	24 Wage/salary, government	25 Federal govt employee	27 State govt employee	28 Local govt employee	29 Unpaid family worker
1950:	<b>9,298,284.77</b>	---	---	<b>3,486,846.22</b>	---	<b>4,747,193.00</b>	---	---	---	-
1950	807,547.856	---	---	2,749,305.543	---	3,529,616.541	---	---	---	-
	1,168.0	.0	.0	422.0	.0	314.0	.0	.0	.0	.
1960:	<b>6,824.59</b>	---	---	<b>4,983.33</b>	---	<b>6,016.76</b>	---	---	---	-
1960	1,198.819	---	---	1,238.727	---	783.575	---	---	---	-
	1,594.0	.0	.0	300.0	.0	698.0	.0	.0	.0	.
1970:	---	<b>14,238.89</b>	---	<b>10,550.00</b>	---	---	<b>13,566.67</b>	---	<b>9,092.86</b>	-
1970	---	2,890.515	---	4,427.713	---	---	2,138.600	---	1,967.335	-
	.0	1,800.0	.0	800.0	.0	.0	600.0	.0	700.0	.
1980:	---	<b>26,155.81</b>	<b>35,203.75</b>	<b>19,921.88</b>	---	---	<b>24,803.40</b>	<b>18,447.00</b>	<b>10,341.25</b>	-
1980	---	2,939.392	17,006.234	2,781.851	---	---	2,315.922	2,607.512	1,608.196	-
	.0	3,100.0	400.0	3,200.0	.0	.0	2,500.0	2,000.0	1,200.0	.

year	1990:	---	<b>50,454.94</b>	<b>45,302.14</b>	<b>39,549.27</b>	<b>39,829.73</b>	---	<b>55,298.86</b>	<b>26,247.40</b>	<b>31,032.58</b>	-
	1990:	---	9,981.226	10,916.191	3,855.916	5,667.260	---	4,428.062	4,223.860	2,209.312	-
	1990:	.0	4,977.0	1,150.0	7,292.0	2,438.0	.0	2,594.0	2,037.0	2,860.0	.
	2000:	---	<b>65,758.34</b>	<b>71,698.32</b>	<b>91,362.95</b>	<b>61,203.12</b>	---	<b>75,543.53</b>	<b>66,004.36</b>	<b>60,482.21</b>	-
	2000:	---	7,960.349	11,465.204	9,300.619	10,230.355	---	5,996.063	6,178.082	4,432.073	-
	2000:	.0	7,796.0	2,301.0	11,064.0	1,546.0	.0	3,241.0	2,691.0	5,052.0	.
	2001:	---	<b>85,028.21</b>	<b>79,167.91</b>	<b>76,099.16</b>	<b>53,231.88</b>	---	<b>66,856.05</b>	<b>67,666.58</b>	<b>55,863.20</b>	-
	2001:	---	11,474.018	11,957.870	7,452.794	10,052.355	---	9,729.822	6,816.396	9,062.593	-
	2001:	.0	3,932.0	3,356.0	13,713.0	1,007.0	.0	2,039.0	2,553.0	3,652.0	.
	2002:	---	<b>52,139.33</b>	<b>99,608.19</b>	<b>103,098.89</b>	<b>40,938.39</b>	---	<b>88,316.65</b>	<b>54,369.28</b>	<b>63,490.46</b>	-
	2002:	---	11,884.098	34,757.430	12,761.867	2,461.263	---	5,960.101	11,290.300	14,000.669	-
	2002:	.0	4,901.0	3,234.0	9,928.0	422.0	.0	2,370.0	2,269.0	3,600.0	.
	2003:	---	<b>85,767.49</b>	<b>122,667.59</b>	<b>70,877.53</b>	<b>97,446.86</b>	---	<b>76,411.85</b>	<b>72,321.85</b>	<b>81,716.61</b>	-
	2003:	---	16,749.266	41,330.928	8,411.247	12,084.264	---	9,138.452	5,546.366	8,483.184	-
	2003:	.0	7,170.0	2,538.0	16,722.0	1,929.0	.0	3,402.0	1,960.0	5,148.0	.
	2004:	---	<b>107,846.72</b>	<b>77,073.13</b>	<b>94,169.87</b>	<b>109,622.29</b>	---	<b>106,607.81</b>	<b>80,534.18</b>	<b>137,520.24</b>	-
	2004:	---	22,823.470	10,795.596	10,199.865	27,823.104	---	12,318.432	9,417.017	21,394.207	-
2004:	.0	4,835.0	5,190.0	12,499.0	1,757.0	.0	4,522.0	2,493.0	3,856.0	.	
2005:	---	<b>80,139.25</b>	<b>127,268.48</b>	<b>97,033.38</b>	<b>72,600.14</b>	---	<b>93,614.92</b>	<b>79,247.53</b>	<b>69,397.20</b>	-	
2005:	---	12,098.319	22,518.320	8,234.564	6,756.142	---	5,370.293	5,360.167	5,799.103	-	
2005:	.0	5,132.0	3,681.0	14,909.0	1,960.0	.0	5,504.0	5,887.0	5,672.0	.	
2006:	---	<b>82,564.84</b>	<b>141,825.31</b>	<b>133,271.69</b>	<b>77,698.64</b>	---	<b>101,779.23</b>	<b>74,349.61</b>	<b>87,323.06</b>	-	
2006:	---	10,863.992	23,464.150	10,843.906	13,224.374	---	6,549.352	5,557.036	5,415.096	-	
2006:	.0	6,535.0	3,509.0	12,006.0	1,378.0	.0	3,501.0	4,867.0	6,165.0	.	
2007:	---	<b>69,522.65</b>	<b>102,237.52</b>	<b>117,598.07</b>	<b>72,718.51</b>	---	<b>92,982.94</b>	<b>73,687.91</b>	<b>72,892.24</b>	-	
2007:	---	9,240.416	10,085.469	9,576.070	8,844.543	---	5,866.561	4,419.429	5,800.448	-	
2007:	.0	5,676.0	5,935.0	15,741.0	2,034.0	.0	5,841.0	5,989.0	6,669.0	.	
2008:	---	<b>74,608.52</b>	<b>86,656.24</b>	<b>102,248.98</b>	<b>75,822.83</b>	---	<b>112,270.52</b>	<b>85,947.65</b>	<b>76,644.15</b>	-	
2008:	---	11,665.762	17,276.713	6,766.467	7,477.622	---	6,249.601	5,598.946	6,189.897	-	
2008:	.0	6,365.0	4,977.0	19,992.0	1,993.0	.0	5,590.0	8,077.0	5,970.0	.	
2009:	---	<b>92,656.32</b>	<b>119,719.87</b>	<b>145,627.37</b>	<b>77,870.62</b>	---	<b>115,570.31</b>	<b>89,753.67</b>	<b>94,278.85</b>	<b>20,000.0</b>	
2009:	---	14,312.774	18,811.491	10,281.909	22,775.673	---	9,950.988	5,021.528	5,367.746	-	
2009:	.0	6,491.0	5,979.0	17,981.0	1,975.0	.0	4,737.0	7,996.0	6,927.0	93.	
2010:	---	<b>72,539.53</b>	<b>87,651.08</b>	<b>138,634.22</b>	<b>74,618.88</b>	---	<b>116,564.47</b>	<b>83,144.87</b>	<b>76,384.92</b>	-	
2010:	---	8,646.084	12,715.403	9,502.606	7,327.168	---	5,821.722	6,221.161	5,847.506	-	
2010:	.0	4,715.0	3,651.0	16,465.0	2,208.0	.0	6,197.0	7,816.0	7,423.0	.	
2011:	---	<b>73,165.81</b>	<b>108,761.66</b>	<b>124,632.64</b>	<b>77,072.00</b>	---	<b>107,219.44</b>	<b>86,300.08</b>	<b>85,953.13</b>	-	
2011:	---	11,586.223	12,372.249	7,409.283	11,149.583	---	6,214.538	5,352.713	7,712.055	-	
2011:	.0	5,348.0	5,973.0	19,955.0	1,661.0	.0	5,927.0	8,006.0	6,718.0	.	
2012:	---	<b>72,403.10</b>	<b>108,620.35</b>	<b>145,595.39</b>	<b>77,077.25</b>	---	<b>111,055.95</b>	<b>94,020.11</b>	<b>113,630.47</b>	-	
2012:	---	7,306.105	13,949.280	8,643.817	19,840.304	---	5,447.130	9,978.565	10,138.659	-	
2012:	.0	7,832.0	5,847.0	18,588.0	1,919.0	.0	7,156.0	6,566.0	5,851.0	.	
2013:	---	<b>69,025.82</b>	<b>142,516.48</b>	<b>127,272.49</b>	<b>80,067.03</b>	---	<b>98,702.09</b>	<b>79,308.54</b>	<b>93,587.48</b>	-	
2013:	---	14,587.608	16,367.380	9,493.523	9,242.322	---	5,338.935	4,482.029	11,029.409	-	
2013:	.0	5,751.0	5,678.0	17,208.0	1,964.0	.0	5,658.0	7,836.0	6,380.0	.	
2014:	---	<b>84,736.11</b>	<b>117,850.31</b>	<b>142,477.39</b>	<b>82,421.48</b>	---	<b>107,635.21</b>	<b>106,998.26</b>	<b>98,331.52</b>	-	
2014:	---	14,002.045	13,370.081	9,087.880	14,546.846	---	7,262.831	8,290.547	6,449.329	-	
2014:	.0	3,674.0	8,791.0	21,844.0	2,523.0	.0	6,133.0	7,636.0	8,284.0	.	
<b>COL TOTAL</b>	<b>3,936,015.57</b>	<b>73,176.74</b>	<b>106,667.29</b>	<b>118,153.20</b>	<b>74,920.18</b>	<b>1,477,093.18</b>	<b>96,849.27</b>	<b>80,582.47</b>	<b>81,911.87</b>	<b>20,000.0</b>	
	957,302.849	2,833.050	4,422.717	6,239.600	3,412.970	1,180,468.021	1,877.046	1,798.619	2,059.393	-	
	2,762.0	96,030.0	72,190.0	250,629.0	28,714.0	1,012.0	77,512.0	86,679.0	92,127.0	93.	

Color coding:	<-1.0	<-0.5	<0.0	>0.0	>0.5	>1.0	Z
Mean in each cell:	Smaller than average			Larger than average			

Chart for race = 2(Black/Negro)

### Mean of Total personal income BY Census year BY Class of worker



■ Self-employed ■ Self-employed, not incorporated ■ Self-employed, incorporated  
■ Wage/salary, private ■ Wage/salary at non-profit ■ Wage/salary, government  
■ Federal govt employee ■ State govt employee ■ Local govt employee ■ Unpaid family worker

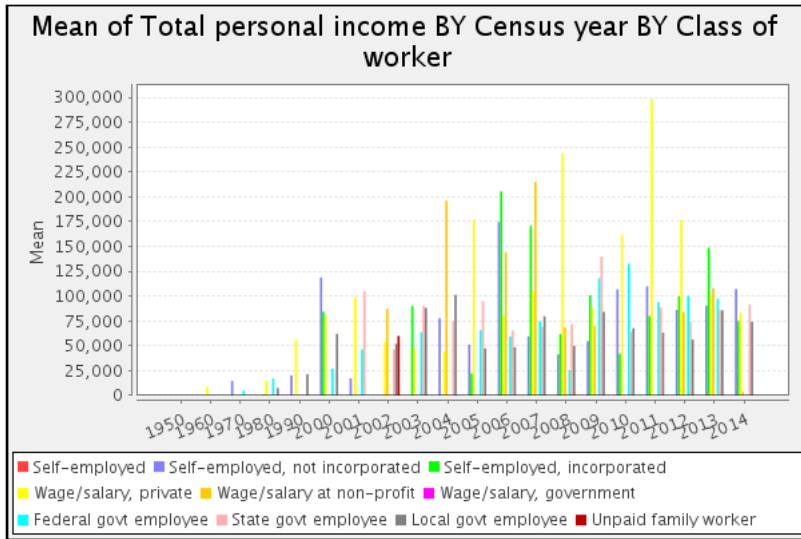
#### Statistics for race = 3(American Indian or Alaska Native)

Cells contain: -Means -SRS Std Errs -Weighted N		classwkrd								ROW TOTAL
		13 Self- employed, not incorporated	14 Self- employed, incorporated	22 Wage/salary, private	23 Wage/salary at non-profit	25 Federal govt employee	27 State govt employee	28 Local govt employee	29 Unpaid family worker	
year	1960: 1960	---	---	<b>8,750.00</b>	---	---	---	---	---	<b>8,750.00</b>
		---	---	---	---	---	---	---	---	---
		.0	.0	100.0	.0	.0	.0	.0	.0	100.0
	1970: 1970	<b>14,483.33</b>	---	---	---	<b>4,850.00</b>	---	---	---	<b>12,075.00</b>
		4,284.209	---	---	---	---	---	---	---	3,870.051
		300.0	.0	.0	.0	100.0	.0	.0	.0	400.0
	1980: 1980	---	<b>1,080.00</b>	<b>15,505.00</b>	---	<b>17,171.67</b>	---	<b>7,505.00</b>	---	<b>12,600.83</b>
		---	---	---	---	5,166.667	---	---	---	3,605.438
		.0	100.0	100.0	.0	300.0	.0	100.0	.0	600.0
	1990: 1990	<b>20,275.82</b>	---	<b>56,285.71</b>	---	---	---	<b>21,373.69</b>	---	<b>36,227.10</b>
		5,595.711	---	3,906.213	---	---	---	13,027.797	---	7,262.957
		194.0	.0	546.0	.0	.0	.0	529.0	.0	1,269.0
	2000: 2000	<b>118,658.98</b>	<b>84,200.00</b>	<b>79,970.74</b>	---	<b>27,000.00</b>	---	<b>62,000.00</b>	---	<b>85,674.13</b>
	66,166.971	67,443.310	17,957.839	---	---	---	---	---	23,627.912	
	412.0	252.0	622.0	.0	116.0	.0	121.0	.0	1,523.0	
2001: 2001	<b>17,368.32</b>	---	<b>99,015.42</b>	---	<b>46,181.08</b>	<b>105,000.00</b>	---	---	<b>61,147.61</b>	
	9,444.396	---	25,686.375	---	7,342.613	---	---	---	14,737.735	
	303.0	.0	389.0	.0	555.0	156.0	.0	.0	1,403.0	
2002: 2002	---	---	<b>53,750.22</b>	<b>87,400.00</b>	---	<b>46,356.45</b>	<b>52,000.00</b>	<b>60,000.00</b>	<b>53,987.84</b>	
	---	---	18,294.499	---	---	11,091.214	---	---	6,633.096	
	.0	.0	2,274.0	224.0	.0	923.0	594.0	213.0	4,228.0	
2003: 2003	---	<b>90,000.00</b>	<b>48,000.00</b>	---	<b>63,600.00</b>	<b>90,010.00</b>	<b>88,194.70</b>	---	<b>74,266.28</b>	
	---	---	---	---	---	---	22,839.472	---	11,604.925	
	.0	65.0	235.0	.0	127.0	46.0	415.0	.0	888.0	
2004: 2004	<b>77,700.00</b>	---	<b>44,152.04</b>	<b>196,000.00</b>	---	<b>75,000.00</b>	<b>101,300.00</b>	---	<b>79,172.86</b>	
	31,744.606	---	20,196.478	---	---	---	41,952.473	---	17,088.531	
	640.0	.0	638.0	150.0	.0	210.0	300.0	.0	1,938.0	
2005: 2005	<b>51,314.38</b>	<b>22,000.00</b>	<b>177,555.28</b>	---	<b>65,846.28</b>	<b>94,834.34</b>	<b>47,447.77</b>	---	<b>71,367.42</b>	
	11,658.245	---	68,992.090	---	26,563.249	14,671.757	5,982.990	---	11,870.337	
	697.0	66.0	322.0	.0	527.0	332.0	913.0	.0	2,857.0	
2006: 2006	<b>174,453.37</b>	<b>205,243.24</b>	<b>80,651.65</b>	<b>144,100.00</b>	<b>59,284.21</b>	<b>65,312.27</b>	<b>48,506.01</b>	---	<b>89,877.23</b>	
	62,989.025	159,604.478	21,173.293	---	958.762	3,898.723	8,298.267	---	13,631.304	
	356.0	185.0	969.0	239.0	285.0	502.0	832.0	.0	3,368.0	
2007: 2007	<b>59,456.67</b>	<b>170,675.68</b>	<b>105,488.05</b>	<b>214,874.02</b>	<b>74,500.00</b>	<b>68,761.33</b>	<b>79,714.25</b>	---	<b>97,832.87</b>	
	11,002.830	48,184.782	43,041.183	90,590.199	28,853.076	20,016.160	7,883.889	---	14,097.992	
	285.0	74.0	636.0	254.0	119.0	331.0	919.0	.0	2,618.0	
2008: 2008	<b>41,400.00</b>	<b>61,791.49</b>	<b>243,927.46</b>	<b>68,719.15</b>	<b>25,650.76</b>	<b>71,981.02</b>	<b>49,934.73</b>	---	<b>81,684.39</b>	
	---	6,067.101	61,296.041	13,169.730	21,316.068	21,069.302	11,643.848	---	17,721.337	
	66.0	235.0	386.0	470.0	394.0	449.0	717.0	.0	2,717.0	
	<b>54,774.29</b>	<b>100,816.33</b>	<b>88,580.00</b>	<b>70,000.00</b>	<b>117,826.63</b>	<b>139,709.08</b>	<b>84,184.34</b>	---	<b>87,968.41</b>	

2009: 2009	29,919.842 350.0	14,661.955 294.0	29,815.331 750.0	---	13,885.149 323.0	109,109.304 98.0	9,492.422 613.0	---	10,508.994 2,707.0
2010: 2010	<b>106,724.52</b> 67,877.323 310.0	<b>41,968.60</b> 15,648.822 414.0	<b>162,185.48</b> 79,506.789 248.0	---	<b>132,402.02</b> 46,863.709 496.0	<b>63,723.86</b> 13,645.554 394.0	<b>67,692.28</b> 11,617.856 544.0	---	<b>90,725.19</b> 15,339.956 2,406.0
2011: 2011	<b>109,729.59</b> 45,732.433 747.0	<b>79,898.41</b> 13,029.458 377.0	<b>297,912.34</b> 74,486.285 308.0	---	<b>94,011.09</b> 6,788.544 530.0	<b>88,438.50</b> 13,929.454 226.0	<b>63,178.02</b> 9,582.659 455.0	---	<b>114,417.59</b> 17,603.786 2,643.0
2012: 2012	<b>86,092.94</b> 61,871.174 269.0	<b>99,725.81</b> 20,666.842 124.0	<b>176,871.30</b> 43,885.222 981.0	<b>84,178.77</b> 21,572.313 179.0	<b>100,303.41</b> 20,037.184 352.0	<b>74,329.02</b> 12,540.147 579.0	<b>56,236.36</b> 11,959.151 594.0	---	<b>109,113.53</b> 15,998.467 3,078.0
2013: 2013	<b>90,398.36</b> 47,464.178 732.0	<b>148,607.93</b> 99,519.817 454.0	<b>100,361.42</b> 33,126.142 534.0	<b>108,000.00</b> ---	<b>97,544.94</b> 11,351.264 781.0	<b>85,603.39</b> 10,787.010 608.0	<b>85,714.24</b> 16,223.208 646.0	---	<b>98,999.34</b> 13,440.760 3,856.0
2014: 2014	<b>107,171.06</b> 21,200.395 350.0	<b>75,000.00</b> ---	<b>83,257.26</b> 22,027.805 668.0	<b>3,700.00</b> ---	---	<b>91,519.77</b> 20,980.751 221.0	<b>73,954.65</b> 7,004.238 441.0	---	<b>79,993.30</b> 9,686.322 1,928.0
<b>COL TOTAL</b>	<b>81,645.28</b> 11,358.973 6,011.0	<b>94,219.87</b> 18,171.742 2,743.0	<b>99,084.40</b> 10,550.686 10,706.0	<b>105,995.10</b> 19,100.964 2,041.0	<b>75,542.41</b> 7,932.540 5,005.0	<b>73,399.75</b> 4,788.142 5,075.0	<b>62,835.31</b> 3,440.882 8,733.0	<b>60,000.00</b> ---	<b>82,376.26</b> 3,788.873 40,527.0

Color coding:	<-1.0	<-0.5	<0.0	>0.0	>0.5	>1.0	Z
Mean in each cell:	Smaller than average			Larger than average			

Chart for race = 3(American Indian or Alaska Native)



Statistics for race = 4(Chinese)										
Cells contain: -Means -SRS Std Errs -Weighted N	classwkrd									
	10 Self- employed	13 Self- employed, not incorporated	14 Self- employed, incorporated	22 Wage/salary, private	23 Wage/salary at non-profit	24 Wage/salary, government	25 Federal govt employee	27 State govt employee	28 Local govt employee	29 Unpaid family worker
1960: 1960	<b>5,050.00</b> ---	---	---	---	---	<b>11,500.00</b> ---	---	---	---	---
	99.0	.0	.0	.0	.0	99.0	.0	.0	.0	.0
1970: 1970	---	<b>50,000.00</b> ---	---	<b>2,550.00</b> ---	---	---	---	---	---	---
	.0	100.0	.0	100.0	.0	.0	.0	.0	.0	.0
1980: 1980	---	<b>60,455.00</b> 14,151.113 400.0	<b>35,007.50</b> 25,002.500 200.0	<b>20,050.00</b> 10,375.951 300.0	---	---	<b>2,115.00</b> 2,115.000 200.0	<b>75.00</b> ---	<b>25,005.00</b> .000 200.0	---
	.0	400.0	200.0	300.0	.0	.0	200.0	100.0	200.0	.0
1990: 1990	---	<b>98,480.60</b> 40,451.199 720.0	<b>65,099.44</b> 35,688.142 252.0	<b>61,421.85</b> 9,289.814 1,491.0	<b>25,000.00</b> ---	---	<b>34,000.00</b> ---	<b>56,845.33</b> 2,178.363 315.0	<b>27,626.08</b> 7,864.680 313.0	---
	.0	720.0	252.0	1,491.0	154.0	.0	91.0	315.0	313.0	.0
2000: 2000	---	<b>134,441.38</b> 60,705.054 1,259.0	<b>171,178.98</b> 60,916.451 433.0	<b>94,711.41</b> 14,960.786 3,914.0	<b>41,383.93</b> 3,187.091 224.0	---	<b>60,262.22</b> 31,986.745 270.0	<b>59,780.94</b> 14,355.573 745.0	<b>65,084.33</b> 7,281.729 691.0	---
	.0	1,259.0	433.0	3,914.0	224.0	.0	270.0	745.0	691.0	.0

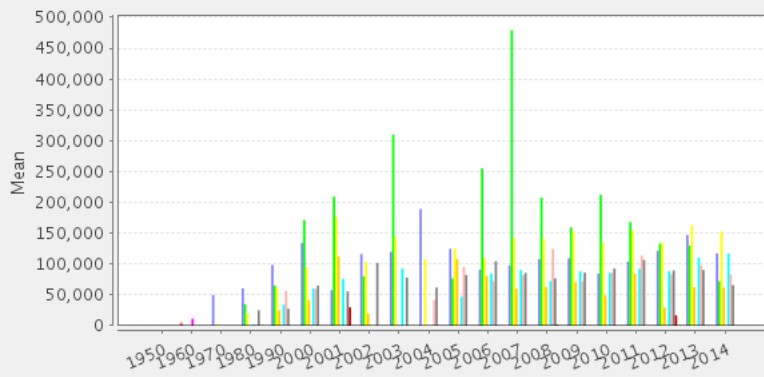


year	2001: 2001	---	<b>57,926.07</b>	<b>209,245.28</b>	<b>176,733.40</b>	<b>112,492.12</b>	---	<b>76,092.77</b>	---	<b>55,661.49</b>	<b>30,000.00</b>
		---	20,577.278	103,853.902	44,331.496	42,030.869	---	11,680.832	---	7,300.249	---
		.0	1,542.0	583.0	3,341.0	746.0	.0	318.0	.0	644.0	231.0
	2002: 2002	---	<b>116,259.30</b>	<b>80,000.00</b>	<b>103,288.96</b>	<b>20,000.00</b>	---	---	---	<b>102,000.00</b>	---
		---	39,535.250	---	19,790.588	---	---	---	---	---	---
		.0	1,022.0	933.0	6,522.0	410.0	.0	.0	.0	220.0	.0
	2003: 2003	---	<b>119,907.71</b>	<b>310,000.00</b>	<b>144,673.16</b>	---	---	<b>92,351.53</b>	---	<b>77,763.80</b>	---
		---	31,000.022	---	18,931.898	---	---	7,725.780	---	14,401.603	---
		.0	1,447.0	205.0	7,150.0	.0	.0	652.0	.0	326.0	.0
	2004: 2004	---	<b>189,278.21</b>	---	<b>107,570.47</b>	---	---	---	---	<b>41,538.92</b>	<b>62,000.00</b>
		---	75,352.341	---	22,216.716	---	---	---	---	14,303.542	---
		.0	973.0	.0	3,864.0	.0	.0	.0	.0	334.0	218.0
	2005: 2005	---	<b>124,751.86</b>	<b>76,679.96</b>	<b>125,496.57</b>	<b>108,152.09</b>	---	<b>47,106.36</b>	<b>95,677.60</b>	<b>82,302.55</b>	---
		---	37,594.793	21,527.245	13,615.210	61,431.581	---	31,649.207	13,772.182	14,432.994	---
		.0	1,171.0	564.0	5,952.0	335.0	.0	214.0	743.0	1,018.0	.0
2006: 2006	---	<b>90,924.60</b>	<b>255,228.86</b>	<b>109,437.96</b>	<b>80,241.72</b>	---	<b>84,874.04</b>	<b>72,035.16</b>	<b>104,741.87</b>	---	
	---	28,816.940	66,103.239	11,018.217	19,638.332	---	12,117.447	16,280.015	10,187.473	---	
	.0	500.0	492.0	4,456.0	858.0	.0	1,209.0	640.0	834.0	.0	
2007: 2007	---	<b>97,629.52</b>	<b>479,116.44</b>	<b>142,634.73</b>	<b>60,000.00</b>	---	<b>90,152.07</b>	<b>81,976.71</b>	<b>85,707.10</b>	---	
	---	32,370.928	29,455.681	13,512.525	---	---	9,665.679	11,843.440	17,106.069	---	
	.0	792.0	146.0	5,037.0	80.0	.0	605.0	773.0	1,056.0	.0	
2008: 2008	---	<b>107,999.53</b>	<b>207,555.56</b>	<b>140,939.76</b>	<b>63,034.29</b>	---	<b>72,409.75</b>	<b>124,358.92</b>	<b>76,787.62</b>	<b>1,800.00</b>	
	---	37,535.307	46,214.784	13,087.696	29,746.642	---	13,295.895	26,598.412	8,827.080	---	
	.0	1,501.0	1,151.0	6,114.0	245.0	.0	393.0	930.0	1,608.0	61.0	
2009: 2009	---	<b>109,241.60</b>	<b>159,534.00</b>	<b>153,246.21</b>	<b>70,518.07</b>	---	<b>88,310.47</b>	<b>72,060.09</b>	<b>85,883.42</b>	---	
	---	26,831.028	33,013.709	12,620.454	26,944.128	---	10,137.184	11,229.038	10,623.091	---	
	.0	1,354.0	2,131.0	7,233.0	581.0	.0	1,070.0	426.0	989.0	.0	
2010: 2010	---	<b>84,496.11</b>	<b>212,094.87</b>	<b>134,626.41</b>	<b>48,683.64</b>	---	<b>85,696.31</b>	<b>85,776.23</b>	<b>92,776.03</b>	---	
	---	29,737.706	49,403.797	11,009.741	13,534.654	---	14,567.444	9,551.863	18,345.036	---	
	.0	1,158.0	1,033.0	6,862.0	483.0	.0	610.0	875.0	691.0	.0	
2011: 2011	---	<b>103,955.17</b>	<b>167,861.78</b>	<b>154,687.50</b>	<b>84,208.17</b>	---	<b>92,458.07</b>	<b>113,698.57</b>	<b>106,675.44</b>	---	
	---	26,887.074	63,054.496	14,684.356	14,177.788	---	9,914.859	48,969.017	18,612.077	---	
	.0	1,884.0	1,502.0	8,276.0	465.0	.0	703.0	1,051.0	421.0	.0	
2012: 2012	---	<b>121,626.89</b>	<b>133,214.56</b>	<b>135,155.30</b>	<b>29,486.80</b>	---	<b>88,483.70</b>	<b>82,865.91</b>	<b>89,708.78</b>	<b>16,754.39</b>	
	---	26,272.568	59,098.972	14,978.519	13,142.431	---	11,500.701	8,932.717	13,453.221	9,458.646	
	.0	2,230.0	1,593.0	8,266.0	303.0	.0	461.0	798.0	763.0	228.0	
2013: 2013	---	<b>147,186.83</b>	<b>129,759.50</b>	<b>163,242.16</b>	<b>62,679.92</b>	---	<b>110,353.61</b>	<b>98,164.78</b>	<b>90,416.56</b>	---	
	---	29,905.956	30,912.556	17,230.588	8,179.603	---	7,045.302	5,667.527	28,642.025	---	
	.0	2,065.0	1,506.0	7,413.0	742.0	.0	1,139.0	619.0	1,110.0	.0	
2014: 2014	---	<b>117,351.89</b>	<b>71,945.17</b>	<b>152,969.21</b>	<b>62,046.90</b>	---	<b>117,040.83</b>	<b>83,160.29</b>	<b>65,994.92</b>	---	
	---	25,572.795	34,966.548	12,261.890	35,713.134	---	17,189.922	18,053.645	7,772.714	---	
	.0	1,927.0	538.0	9,876.0	565.0	.0	1,041.0	1,180.0	885.0	.0	
<b>COL TOTAL</b>	<b>5,050.00</b>	<b>113,815.22</b>	<b>157,811.72</b>	<b>136,720.11</b>	<b>68,599.96</b>	<b>11,500.00</b>	<b>89,124.25</b>	<b>86,347.62</b>	<b>80,259.21</b>	<b>20,884.23</b>	
	---	8,348.006	14,885.839	3,960.074	6,908.625	---	4,054.343	6,782.025	4,207.881	6,489.591	
	99.0	22,045.0	13,262.0	96,167.0	6,191.0	99.0	8,976.0	9,529.0	11,987.0	520.0	

Color coding:	<-1.0	<-0.5	<0.0	>0.0	>0.5	>1.0	Z
Mean in each cell:	Smaller than average			Larger than average			

Chart for race = 4(Chinese)

### Mean of Total personal income BY Census year BY Class of worker



■ Self-employed 
 ■ Self-employed, not incorporated 
 ■ Self-employed, incorporated  
■ Wage/salary, private 
 ■ Wage/salary at non-profit 
 ■ Wage/salary, government  
■ Federal govt employee 
 ■ State govt employee 
 ■ Local govt employee 
 ■ Unpaid family worker

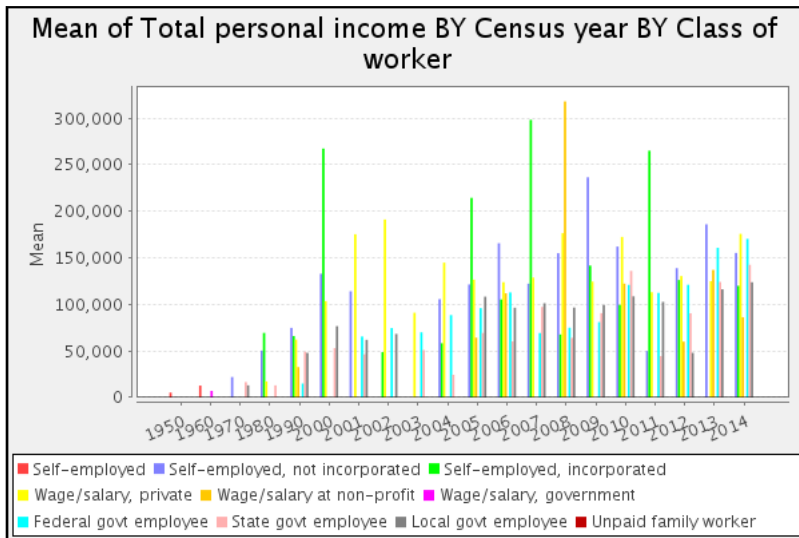
#### Statistics for race = 5(Japanese)

Cells contain: -Means -SRS Std Errs -Weighted N		classwkrd									ROW TOTAL
		10 Self- employed	13 Self- employed, not incorporated	14 Self- employed, incorporated	22 Wage/salary, private	23 Wage/salary at non-profit	24 Wage/salary, government	25 Federal govt employee	27 State govt employee	28 Local govt employee	
year	1950: 1950	5,250.00 --- 110.0	---	---	---	---	---	---	---	---	5,250.00 ---
	1960: 1960	12,775.00 9,725.000 200.0	---	---	---	---	7,050.00 ---	---	---	---	10,866.67 5,930.17 300.0
	1970: 1970	---	22,000.00 2,207.751 400.0	---	---	---	---	---	16,550.00 ---	13,050.00 ---	19,600.00 2,111.35 600.0
	1980: 1980	---	50,348.33 16,117.575 300.0	69,410.00 ---	17,272.00 5,446.940 500.0	---	---	---	13,005.00 ---	---	31,982.00 8,169.66 1,000.0
	1990: 1990	---	74,793.75 20,722.093 260.0	65,983.03 23,394.229 231.0	62,206.75 6,628.883 1,904.0	32,600.00 ---	---	15,000.00 ---	49,215.00 ---	47,920.16 7,956.021 342.0	58,502.4 5,134.32 3,036.0
	2000: 2000	---	132,970.19 45,339.337 618.0	267,459.54 67,726.569 346.0	103,538.53 22,611.917 1,343.0	---	---	---	53,000.00 ---	76,652.49 11,981.179 519.0	122,476.1 18,415.90 2,933.0
	2001: 2001	---	114,127.87 27,152.325 1,134.0	---	175,415.59 70,035.069 1,065.0	---	---	65,500.00 ---	46,436.48 7,210.144 307.0	61,929.77 8,967.182 346.0	119,371.5 23,722.19 3,065.0
	2002: 2002	---	---	48,700.00 ---	191,227.75 62,171.605 1,708.0	---	---	74,600.00 ---	---	68,280.55 1,509.111 401.0	154,730.5 41,031.05 2,422.0
	2003: 2003	---	---	---	91,084.52 17,654.415 1,098.0	---	---	70,000.00 ---	51,000.00 ---	---	87,442.6 14,985.38 1,251.0
	2004: 2004	---	105,648.73 84,252.499 275.0	58,246.81 17,879.550 141.0	144,893.04 34,901.270 589.0	---	---	88,553.96 23,831.444 278.0	24,334.85 10,361.116 231.0	---	100,956.1 19,846.71 1,514.0
	2005: 2005	---	121,422.90 42,815.608 594.0	214,534.50 74,686.539 429.0	126,598.69 24,144.096 1,145.0	64,277.49 7,505.233 191.0	---	95,969.01 4,477.712 241.0	69,333.33 18,811.935 165.0	108,319.76 17,795.457 339.0	126,508.3 16,450.76 3,104.0
	2006: 2006	---	165,756.48 59,079.703 324.0	105,275.56 23,730.567 311.0	123,891.37 21,232.196 1,464.0	111,908.38 44,439.143 382.0	---	112,830.29 12,170.722 307.0	60,192.79 13,138.413 416.0	96,450.71 15,783.299 491.0	113,019.8 11,605.93 3,695.0
	2007: 2007	---	122,271.33 44,774.345 593.0	298,319.68 110,523.972 369.0	128,813.54 26,515.741 1,595.0	---	---	69,268.31 14,618.318 235.0	97,285.58 16,137.470 513.0	101,257.14 17,104.710 350.0	133,972.6 19,383.68 3,655.0

2008: 2008	---	<b>155,023.56</b>	<b>67,695.65</b>	<b>176,507.38</b>	<b>318,100.00</b>	---	<b>75,000.00</b>	<b>64,051.95</b>	<b>96,646.32</b>	<b>149,443.2</b>
	---	55,773.553	7,497.448	34,733.144	---	---	---	15,179.630	28,316.482	20,853.20
	.0	662.0	115.0	1,734.0	75.0	.0	81.0	308.0	408.0	3,383
2009: 2009	---	<b>236,573.36</b>	<b>141,704.08</b>	<b>124,512.47</b>	---	---	<b>81,000.00</b>	<b>90,619.46</b>	<b>99,419.11</b>	<b>131,869.0</b>
	---	75,680.998	61,353.015	20,975.755	---	---	---	20,021.603	15,068.094	16,304.16
	.0	506.0	392.0	1,668.0	.0	.0	74.0	370.0	787.0	3,797
2010: 2010	---	<b>162,142.20</b>	<b>99,526.97</b>	<b>172,553.47</b>	<b>122,333.33</b>	---	<b>121,019.49</b>	<b>136,002.61</b>	<b>108,666.69</b>	<b>141,095.6</b>
	---	35,045.345	23,285.263	29,022.259	4,422.166	---	12,973.972	18,707.229	31,448.906	11,647.44
	.0	654.0	241.0	922.0	315.0	.0	390.0	479.0	511.0	3,512
2011: 2011	---	<b>50,000.00</b>	<b>265,193.37</b>	<b>113,079.17</b>	---	---	<b>112,418.25</b>	<b>44,428.84</b>	<b>102,707.69</b>	<b>100,812.3</b>
	---	.000	118,196.349	18,917.035	---	---	11,077.184	20,845.100	32,574.859	14,426.00
	.0	161.0	181.0	2,146.0	.0	.0	274.0	912.0	182.0	3,856
2012: 2012	---	<b>138,904.44</b>	<b>126,149.07</b>	<b>130,410.14</b>	<b>60,000.00</b>	---	<b>121,113.89</b>	<b>90,475.27</b>	<b>48,000.00</b>	<b>126,037.4</b>
	---	36,099.063	47,513.341	21,153.047	---	---	21,033.790	8,400.125	---	14,268.97
	.0	1,036.0	966.0	2,340.0	60.0	.0	458.0	245.0	112.0	5,217
2013: 2013	---	<b>186,051.69</b>	---	<b>125,033.31</b>	<b>137,060.00</b>	---	<b>160,775.35</b>	<b>124,097.56</b>	<b>116,241.09</b>	<b>139,558.8</b>
	---	41,546.187	---	23,433.621	---	---	75,138.564	36,825.481	20,265.513	15,330.92
	.0	712.0	.0	1,591.0	57.0	.0	159.0	246.0	404.0	3,169
2014: 2014	---	<b>155,325.36</b>	<b>120,000.00</b>	<b>175,838.58</b>	<b>86,216.81</b>	---	<b>170,400.00</b>	<b>142,594.53</b>	<b>123,823.13</b>	<b>157,836.0</b>
	---	45,908.474	---	39,235.765	17,100.740	---	---	19,407.558	12,300.505	22,895.95
	.0	489.0	52.0	2,036.0	226.0	.0	45.0	329.0	377.0	3,554
<b>COL TOTAL</b>	<b>10,104.84</b>	<b>134,329.97</b>	<b>157,544.50</b>	<b>131,773.79</b>	<b>107,593.13</b>	<b>7,050.00</b>	<b>98,694.56</b>	<b>76,676.83</b>	<b>91,147.82</b>	<b>121,086.4</b>
	6,081.930	11,840.804	21,524.211	7,310.540	18,441.025	---	7,917.529	6,995.930	5,668.926	4,445.98
	310.0	8,718.0	3,974.0	24,848.0	1,410.0	100.0	3,194.0	4,950.0	5,669.0	53,173

<b>Color coding:</b>	<-1.0	<-0.5	<0.0	>0.0	>0.5	>1.0	Z
<b>Mean in each cell:</b>	Smaller than average			Larger than average			

Chart for race = 5(Japanese)



Statistics for race = 6(Other Asian or Pacific Islander)

		classwkrd								
Cells contain: -Means -SRS Std Errs -Weighted N		13 Self- employed, not incorporated	14 Self- employed, incorporated	22 Wage/salary, private	23 Wage/salary at non-profit	25 Federal govt employee	27 State govt employee	28 Local govt employee	29 Unpaid family worker	<b>ROW TOTAL</b>
1970: 1970	---	---	---	<b>12,050.00</b>	---	---	---	---	---	<b>12,050.00</b>
	---	---	---	---	---	---	---	---	---	---
	.0	.0	.0	100.0	.0	.0	.0	.0	.0	100.0
1980: 1980	<b>16,005.00</b>	---	---	<b>4,081.25</b>	---	<b>2,005.00</b>	---	---	---	<b>7,191.43</b>
	3,500.000	---	---	2,406.465	---	---	---	---	---	2,738.364
	200.0	.0	.0	400.0	.0	100.0	.0	.0	.0	700.0
1990: 1990	<b>52,526.05</b>	<b>50,000.00</b>	---	<b>47,919.95</b>	<b>9,000.00</b>	<b>52,243.05</b>	---	<b>41,122.37</b>	---	<b>45,038.83</b>
	18,863.796	---	---	15,596.742	---	10,863.330	---	7,058.049	---	7,098.392
	416.0	65.0	---	1,213.0	210.0	533.0	.0	818.0	.0	3,255.0
2000: 2000	<b>91,403.89</b>	<b>172,510.09</b>	---	<b>97,160.19</b>	<b>39,332.82</b>	<b>61,674.32</b>	<b>47,104.46</b>	<b>40,595.03</b>	---	<b>88,043.01</b>
	24,820.097	46,172.025	---	10,577.333	4,350.651	9,618.003	10,477.528	7,107.467	---	7,815.794

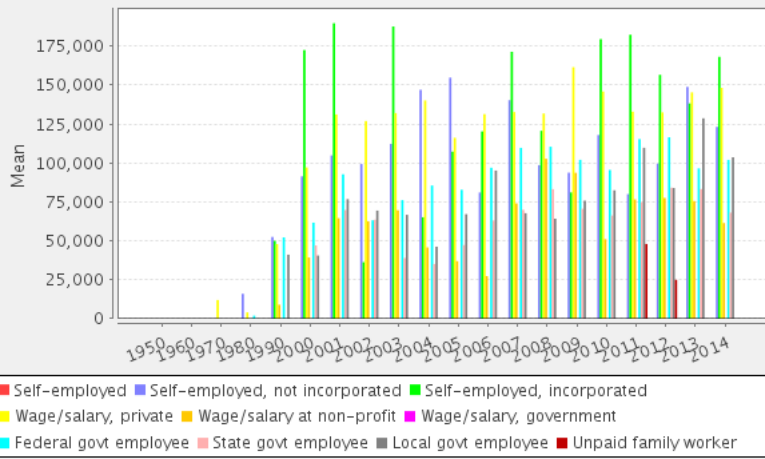


	1,156.0	971.0	5,856.0	355.0	952.0	538.0	1,578.0	.0	11,406.0
2001: 2001	<b>104,835.09</b> 19,277.462 1,140.0	<b>189,705.88</b> 139,621.027 408.0	<b>131,149.92</b> 20,741.229 6,362.0	<b>64,576.39</b> 23,771.359 415.0	<b>92,744.44</b> 17,985.145 432.0	<b>69,793.91</b> 15,418.915 394.0	<b>76,780.07</b> 9,179.326 838.0	---	<b>119,130.35</b> 13,439.964 9,989.0
2002: 2002	<b>99,318.43</b> 23,896.809 2,746.0	<b>36,300.00</b> ---	<b>126,958.28</b> 21,318.148 9,519.0	<b>62,606.96</b> 13,290.187 658.0	<b>63,214.72</b> 10,975.415 1,114.0	<b>63,561.10</b> 9,352.019 2,396.0	<b>69,421.57</b> 13,359.111 779.0	---	<b>102,723.68</b> 12,262.458 17,681.0
2003: 2003	<b>112,268.06</b> 47,203.278 720.0	<b>187,623.04</b> 89,372.747 599.0	<b>132,064.20</b> 21,723.783 9,547.0	<b>69,628.09</b> 30,269.434 929.0	<b>76,153.01</b> 21,163.273 724.0	<b>39,000.00</b> ---	<b>66,719.18</b> 6,557.269 2,184.0	---	<b>115,701.67</b> 14,739.822 14,943.0
2004: 2004	<b>146,977.15</b> 68,433.029 1,138.0	<b>65,165.77</b> 11,182.562 1,396.0	<b>140,138.83</b> 24,875.543 10,461.0	<b>45,777.19</b> 8,189.286 377.0	<b>85,532.75</b> 8,012.346 1,267.0	<b>35,163.10</b> 10,624.707 496.0	<b>46,250.48</b> 5,168.868 1,046.0	---	<b>118,390.13</b> 16,798.660 16,181.0
2005: 2005	<b>154,796.62</b> 23,225.314 3,598.0	<b>107,285.36</b> 21,089.846 1,463.0	<b>116,169.34</b> 8,342.374 9,702.0	<b>36,991.43</b> 5,985.825 467.0	<b>82,803.04</b> 6,062.647 2,054.0	<b>47,304.79</b> 8,914.458 730.0	<b>67,142.41</b> 8,738.135 1,318.0	---	<b>111,285.45</b> 6,470.628 19,332.0
2006: 2006	<b>81,033.52</b> 32,304.832 1,464.0	<b>120,277.83</b> 29,687.257 1,033.0	<b>131,364.30</b> 8,982.285 12,111.0	<b>27,381.82</b> 15,206.768 506.0	<b>96,954.72</b> 6,867.581 1,308.0	<b>63,050.30</b> 6,973.391 1,833.0	<b>95,125.80</b> 25,432.956 1,310.0	---	<b>113,196.58</b> 6,824.413 19,565.0
2007: 2007	<b>140,298.39</b> 33,511.149 1,951.0	<b>171,385.86</b> 47,384.106 1,238.0	<b>132,684.22</b> 10,300.716 9,900.0	<b>74,027.19</b> 13,976.042 924.0	<b>109,713.23</b> 12,611.494 1,577.0	<b>69,944.12</b> 7,459.633 621.0	<b>67,757.72</b> 9,133.908 1,968.0	---	<b>121,990.92</b> 7,747.557 18,179.0
2008: 2008	<b>98,587.27</b> 25,483.753 2,997.0	<b>120,672.64</b> 26,242.945 1,396.0	<b>131,767.57</b> 11,030.379 12,426.0	<b>102,686.94</b> 29,772.201 919.0	<b>110,429.96</b> 9,014.587 1,488.0	<b>83,185.87</b> 10,197.420 1,366.0	<b>64,236.87</b> 9,265.293 1,828.0	---	<b>115,567.12</b> 7,387.069 22,420.0
2009: 2009	<b>93,773.91</b> 21,156.733 1,990.0	<b>81,078.02</b> 18,467.220 1,120.0	<b>161,487.64</b> 11,961.832 12,185.0	<b>93,672.40</b> 20,683.573 1,076.0	<b>102,032.77</b> 8,710.278 2,103.0	<b>70,575.78</b> 9,117.289 1,445.0	<b>75,807.93</b> 15,866.825 1,690.0	---	<b>129,141.01</b> 7,667.184 21,609.0
2010: 2010	<b>117,938.17</b> 20,990.661 2,290.0	<b>179,506.74</b> 41,996.523 1,869.0	<b>145,908.01</b> 10,377.472 14,246.0	<b>51,058.31</b> 9,044.924 933.0	<b>95,521.72</b> 9,870.727 1,856.0	<b>66,254.15</b> 12,773.263 1,733.0	<b>82,451.15</b> 7,871.248 1,701.0	---	<b>128,478.79</b> 7,372.839 24,628.0
2011: 2011	<b>80,024.28</b> 20,972.253 1,814.0	<b>182,326.70</b> 41,350.658 1,573.0	<b>132,954.59</b> 10,378.070 15,856.0	<b>76,614.80</b> 15,399.324 1,804.0	<b>115,325.93</b> 7,182.399 3,292.0	<b>74,790.78</b> 10,886.516 1,226.0	<b>109,764.31</b> 20,988.836 1,145.0	<b>48,000.00</b> ---	<b>122,402.82</b> 7,116.494 26,790.0
2012: 2012	<b>99,597.93</b> 26,315.568 3,205.0	<b>156,602.86</b> 47,158.949 2,554.0	<b>132,461.34</b> 9,905.072 15,308.0	<b>77,549.85</b> 15,673.235 1,575.0	<b>116,507.79</b> 9,597.899 1,876.0	<b>84,156.51</b> 8,266.591 1,567.0	<b>83,968.93</b> 12,534.373 1,455.0	<b>25,000.00</b> ---	<b>120,909.73</b> 7,679.803 27,663.0
2013: 2013	<b>148,830.21</b> 35,529.406 2,296.0	<b>138,242.03</b> 22,831.774 1,934.0	<b>145,329.85</b> 10,549.810 15,471.0	<b>75,546.13</b> 6,750.066 1,498.0	<b>96,516.09</b> 8,929.469 2,541.0	<b>83,248.28</b> 12,890.594 1,821.0	<b>128,665.37</b> 21,276.713 2,511.0	---	<b>131,467.71</b> 7,088.424 28,072.0
2014: 2014	<b>123,178.05</b> 26,305.557 2,533.0	<b>168,180.68</b> 30,666.291 2,624.0	<b>148,237.75</b> 9,132.776 18,535.0	<b>61,424.99</b> 9,051.660 1,876.0	<b>101,983.89</b> 7,502.423 2,787.0	<b>68,098.45</b> 5,212.337 2,007.0	<b>103,649.19</b> 8,272.292 1,358.0	---	<b>131,708.52</b> 6,505.093 31,720.0
<b>COL TOTAL</b>	<b>113,433.24</b> 7,212.167 31,654.0	<b>142,531.63</b> 10,445.480 20,712.0	<b>135,307.00</b> 3,068.003 179,198.0	<b>68,645.86</b> 4,504.150 14,522.0	<b>96,698.38</b> 2,611.984 26,004.0	<b>68,850.33</b> 2,816.045 18,413.0	<b>78,809.27</b> 4,076.544 23,527.0	<b>34,064.04</b> 11,239.043 203.0	<b>119,114.47</b> 2,112.852 314,233.0

Color coding:	<-1.0	<-0.5	<0.0	>0.0	>0.5	>1.0	Z
Mean in each cell:	Smaller than average			Larger than average			

Chart for race = 6(Other Asian or Pacific Islander)

### Mean of Total personal income BY Census year BY Class of worker



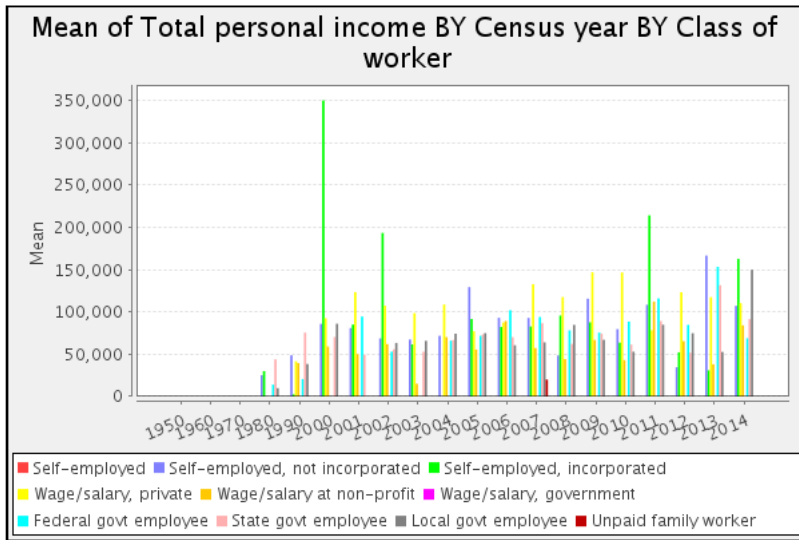
### Statistics for race = 7(Other race, nec)

Cells contain: -Means -SRS Std Errs -Weighted N		classwkrd								ROW TOTAL
		13 Self- employed, not incorporated	14 Self- employed, incorporated	22 Wage/salary, private	23 Wage/salary at non-profit	25 Federal govt employee	27 State govt employee	28 Local govt employee	29 Unpaid family worker	
year	1980: 1980	25,157.50 5,152.500 200.0	30,005.00 ---	---	---	14,005.00 ---	43,910.00 ---	9,815.00 ---	---	24,675.00 5,120.627 600.0
	1990: 1990	48,665.50 28,206.077 282.0	2,500.00 ---	41,564.91 7,659.672 1,633.0	39,506.00 13,494.000 270.0	20,653.66 10,995.210 389.0	75,500.00 ---	38,383.03 5,242.336 872.0	---	39,059.56 4,806.887 3,619.0
	2000: 2000	85,856.30 23,176.828 708.0	350,000.00 ---	92,476.84 18,776.800 2,475.0	59,053.42 19,131.873 161.0	---	70,244.66 9,568.679 421.0	86,000.00 ---	---	97,548.88 14,618.225 4,041.0
	2001: 2001	80,976.67 23,881.335 1,566.0	85,000.00 ---	123,349.78 29,206.443 2,806.0	50,000.00 ---	94,500.00 ---	49,404.93 7,267.279 2,160.0	---	---	87,473.06 14,271.361 7,198.0
	2002: 2002	68,624.23 48,988.700 1,791.0	193,378.44 157,909.763 473.0	107,318.15 28,117.832 2,253.0	61,963.37 4,937.065 1,043.0	53,000.00 ---	55,749.18 10,071.990 610.0	63,307.53 18,711.872 870.0	---	83,376.46 15,569.586 7,794.0
	2003: 2003	67,334.08 30,210.508 1,497.0	61,583.69 11,858.306 748.0	98,528.93 19,672.617 2,983.0	15,000.00 ---	---	52,928.08 4,272.701 584.0	65,785.02 42,436.652 1,242.0	---	74,765.06 11,349.188 7,489.0
	2004: 2004	71,729.80 33,789.694 1,879.0	---	108,770.62 16,967.652 4,397.0	70,161.30 16,823.746 553.0	66,000.00 ---	66,753.86 20,336.635 414.0	74,211.46 16,876.652 1,417.0	---	89,233.85 10,859.987 9,171.0
	2005: 2005	129,216.49 29,359.037 1,625.0	91,608.24 20,485.780 1,141.0	77,074.46 10,038.568 3,766.0	55,468.97 24,816.139 145.0	71,720.36 8,216.283 776.0	73,380.94 9,144.530 995.0	74,889.11 16,056.716 1,028.0	---	86,372.12 7,611.002 9,476.0
	2006: 2006	92,960.46 20,714.255 2,180.0	82,226.33 39,555.573 790.0	87,392.85 10,813.130 5,527.0	89,259.18 19,400.682 901.0	101,978.63 17,439.061 936.0	70,058.14 8,832.853 2,150.0	60,506.97 7,355.141 1,177.0	---	84,060.40 6,248.157 13,661.0
	2007: 2007	92,851.32 14,503.599 2,514.0	82,691.13 17,725.052 1,262.0	132,782.03 25,899.139 4,054.0	57,189.78 15,689.818 509.0	93,966.77 15,847.534 678.0	86,579.51 12,769.632 815.0	63,960.32 9,004.091 2,142.0	20,000.00 ---	97,353.85 9,704.173 12,113.0
	2008: 2008	48,482.54 17,286.713 653.0	95,721.06 18,891.903 527.0	117,533.93 23,318.645 4,162.0	44,200.95 12,126.314 843.0	78,176.12 19,306.709 335.0	62,079.95 10,820.738 1,228.0	84,618.44 33,706.840 1,165.0	---	90,827.48 11,636.406 8,913.0
	2009: 2009	115,594.59 45,109.292 555.0	87,643.15 24,208.182 1,416.0	146,845.54 24,200.416 3,983.0	66,815.65 14,811.767 741.0	75,513.91 10,992.806 302.0	74,352.56 19,976.934 624.0	67,008.94 8,227.371 1,195.0	---	110,246.23 12,202.470 8,816.0
	2010: 2010	79,590.69 30,493.863 1,053.0	63,659.65 25,884.986 922.0	146,653.78 22,589.403 4,149.0	43,000.00 ---	88,492.47 19,157.919 656.0	61,361.17 8,314.103 824.0	52,899.40 19,701.527 668.0	---	107,593.10 12,167.756 8,348.0
		108,416.56	214,091.14	78,231.45	112,093.10	115,943.32	89,190.05	84,819.86	---	115,815.07

2011: 2011	31,840.078 1,048.0	46,873.481 1,404.0	10,780.698 2,461.0	55,389.588 348.0	18,558.518 734.0	23,061.295 563.0	16,732.222 695.0	---	12,463.860 7,253.0
2012: 2012	34,517.02 6,248.565 1,510.0	52,228.23 14,024.895 333.0	123,246.52 22,533.710 3,983.0	65,378.13 12,814.243 855.0	84,617.03 10,103.568 552.0	51,603.31 21,299.298 755.0	74,812.86 29,192.954 941.0	---	86,501.28 11,541.958 8,929.0
2013: 2013	166,575.82 50,724.736 488.0	30,877.17 22,498.328 400.0	117,434.49 23,303.886 3,645.0	38,035.34 2,840.673 283.0	153,254.90 18,055.767 408.0	131,502.99 32,334.876 468.0	52,653.06 21,507.024 588.0	---	109,471.97 14,614.348 6,280.0
2014: 2014	107,134.88 32,253.637 1,468.0	162,621.18 68,106.858 883.0	110,271.01 14,670.751 4,909.0	84,022.36 14,189.974 331.0	68,803.74 5,304.625 214.0	91,404.32 16,170.664 834.0	149,832.21 40,224.708 596.0	---	113,725.56 11,322.777 9,235.0
<b>COL TOTAL</b>	85,398.61 6,974.669 21,017.0	110,282.50 12,241.155 10,810.0	110,232.16 5,126.696 57,186.0	62,459.43 5,454.987 7,747.0	83,938.65 5,332.438 7,580.0	68,531.33 3,675.063 13,643.0	69,889.77 5,312.264 14,814.0	20,000.00 ---	93,157.16 2,809.723 132,936.0

<b>Color coding:</b>	<-1.0	<-0.5	<0.0	>0.0	>0.5	>1.0	Z
<b>Mean in each cell:</b>	Smaller than average			Larger than average			

Chart for race = 7(Other race, nec)

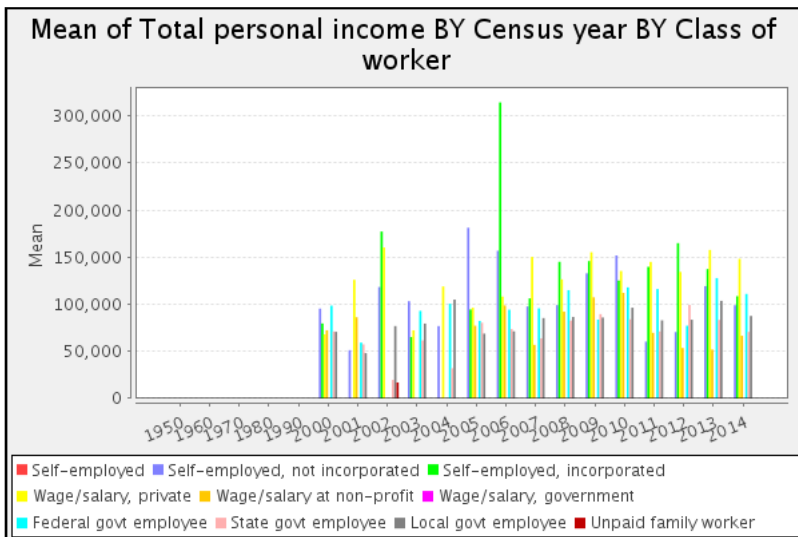


Statistics for race = 8(Two major races)									
Cells contain: -Means -SRS Std Errs -Weighted N	classwkrd								
	13 Self- employed, not incorporated	14 Self- employed, incorporated	22 Wage/salary, private	23 Wage/salary at non-profit	25 Federal govt employee	27 State govt employee	28 Local govt employee	29 Unpaid family worker	ROW TOTAL
2000: 2000	95,475.15 19,258.274 1,905.0	79,687.02 11,750.958 1,049.0	68,144.98 11,769.372 3,398.0	72,462.06 21,913.080 572.0	98,631.58 4,415.410 171.0	71,197.25 8,000.174 910.0	70,792.50 17,756.782 613.0	---	76,993.28 6,919.487 8,618.0
2001: 2001	51,313.33 22,625.707 983.0	---	126,094.60 27,062.504 3,355.0	86,287.62 18,629.652 265.0	59,302.16 11,391.922 2,404.0	57,465.12 10,423.919 258.0	48,142.28 5,226.922 1,646.0	---	82,256.22 12,752.747 8,911.0
2002: 2002	118,391.60 24,820.455 2,071.0	177,337.17 79,681.131 635.0	160,368.34 30,794.885 4,666.0	---	---	19,616.22 5,968.273 555.0	76,926.77 5,517.329 269.0	17,000.00 359.0	133,694.92 19,760.520 8,555.0
2003: 2003	103,312.50 51,449.877 432.0	65,255.83 11,539.484 815.0	72,403.37 12,535.309 4,354.0	---	93,091.57 17,052.515 362.0	61,641.70 10,415.145 458.0	79,558.97 12,302.035 1,222.0	---	74,867.31 7,520.648 7,643.0
2004: 2004	76,913.52 29,763.409 1,945.0	---	119,015.60 18,569.975 6,688.0	---	100,621.63 9,111.377 823.0	32,000.00 ---	105,013.91 82,572.451 831.0	---	107,600.05 13,744.498 10,403.0
2005: 2005	181,359.24 40,609.286 1,072.0	94,535.00 26,780.380 1,157.0	96,369.84 10,235.467 3,863.0	77,279.66 5,506.649 118.0	82,374.22 16,298.854 481.0	80,445.88 14,172.177 1,274.0	68,882.07 8,723.114 1,553.0	---	98,158.62 7,667.155 9,518.0
2006: 2006	156,946.15 27,257.803 2,011.0	314,483.48 57,773.045 333.0	108,248.74 13,418.640 4,544.0	98,806.01 44,446.208 361.0	94,321.37 3,710.725 342.0	73,754.92 6,738.233 2,087.0	71,316.42 11,325.314 1,096.0	---	112,515.33 9,500.631 10,774.0

year	2007: 2007	97,778.26 24,618.714 1,619.0	106,329.68 35,073.530 677.0	150,303.84 16,516.831 3,623.0	56,946.08 4,553.495 666.0	95,736.07 21,645.026 295.0	63,908.22 14,063.403 805.0	85,426.17 10,727.059 1,190.0	---	112,012.45 9,328.494 8,875.0
	2008: 2008	99,127.51 25,960.705 1,818.0	145,217.20 40,159.026 808.0	126,579.96 15,559.260 4,568.0	92,201.63 24,886.126 491.0	115,095.47 10,020.655 618.0	82,747.68 14,491.776 539.0	86,630.47 25,593.210 512.0	---	115,578.62 9,913.573 9,354.0
	2009: 2009	132,930.97 24,171.343 1,944.0	145,929.25 28,915.902 1,405.0	155,382.57 13,489.994 6,564.0	107,415.27 32,204.978 643.0	83,757.74 12,993.207 895.0	89,640.78 8,149.996 1,133.0	86,001.18 14,931.389 1,087.0	---	133,308.25 8,348.893 13,671.0
	2010: 2010	151,907.18 35,992.422 1,260.0	125,292.21 21,395.396 1,278.0	135,485.76 10,317.470 8,176.0	112,172.50 30,415.530 531.0	118,006.60 13,885.230 1,293.0	84,057.58 11,277.369 1,096.0	96,405.04 12,872.591 1,647.0	---	125,797.42 7,052.800 15,281.0
	2011: 2011	60,398.24 19,394.585 1,205.0	139,838.89 38,633.498 1,102.0	145,138.93 13,563.635 6,989.0	69,749.44 21,652.532 551.0	116,263.29 19,497.319 621.0	71,242.49 12,936.854 1,382.0	82,981.28 10,504.228 1,606.0	---	117,688.38 8,539.561 13,456.0
	2012: 2012	70,553.38 21,426.582 1,936.0	165,024.88 42,606.852 938.0	134,468.80 13,002.694 6,601.0	53,578.52 10,103.314 487.0	77,294.17 19,889.457 738.0	99,337.09 20,065.048 865.0	83,647.84 15,696.680 1,109.0	---	113,684.80 8,660.648 12,674.0
	2013: 2013	119,367.63 30,197.532 1,795.0	137,448.46 27,625.765 1,508.0	157,822.28 13,304.516 8,763.0	51,936.57 12,073.102 629.0	127,939.45 17,152.589 2,100.0	83,459.14 13,279.688 1,417.0	103,701.42 13,202.289 1,624.0	---	134,141.48 8,177.281 17,836.0
	2014: 2014	98,997.58 22,347.030 1,725.0	108,645.45 28,077.613 1,472.0	148,344.64 13,410.131 7,582.0	66,586.91 13,125.645 544.0	111,088.89 8,380.062 1,872.0	70,699.64 10,327.518 919.0	87,660.53 7,469.446 1,774.0	---	120,852.87 7,339.336 15,888.0
	<b>COL TOTAL</b>	<b>108,111.73</b> 7,127.488 23,721.0	<b>128,561.37</b> 9,541.755 13,177.0	<b>131,827.49</b> 3,925.588 83,734.0	<b>77,560.13</b> 6,473.790 5,858.0	<b>98,394.91</b> 4,638.996 13,015.0	<b>75,012.05</b> 3,565.097 13,814.0	<b>82,185.96</b> 3,634.599 17,779.0	<b>17,000.00</b> ---	<b>113,938.05</b> 2,404.963 171,457.0

Color coding:	<-1.0	<-0.5	<0.0	>0.0	>0.5	>1.0	Z
Mean in each cell:	Smaller than average			Larger than average			

Chart for race = 8(Two major races)



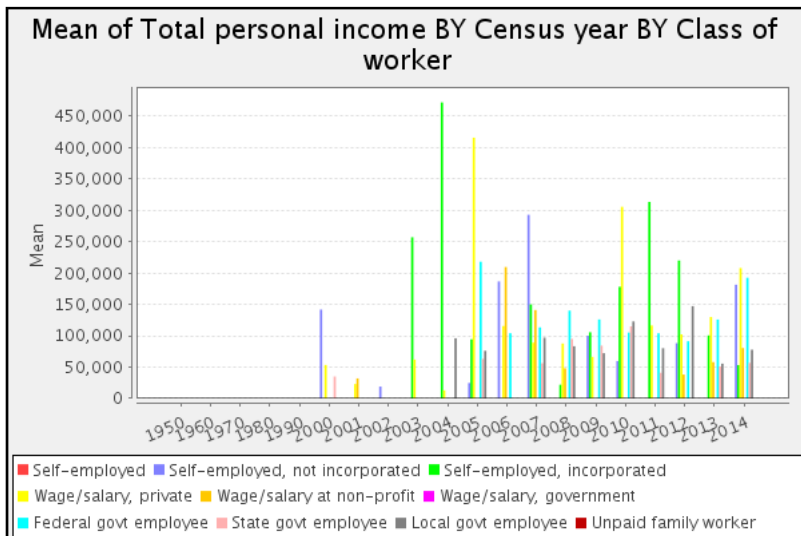
Statistics for race = 9(Three or more major races)

		classwkrd							
Cells contain: -Means -SRS Std Errs -Weighted N		13 Self- employed, not incorporated	14 Self- employed, incorporated	22 Wage/salary, private	23 Wage/salary at non-profit	25 Federal govt employee	27 State govt employee	28 Local govt employee	ROW TOTAL
2000: 2000	141,764.71 114,301.731 170.0	---	---	53,489.95 30,165.663 209.0	.00 ---	---	35,000.00 ---	.00 ---	57,956.66 32,325.758 683.0
2001: 2001	---	---	23,000.00 ---	32,000.00 ---	---	---	---	---	30,147.06 3,639.104 306.0
2002: 2002	19,000.00 ---	---	---	---	---	---	---	---	19,000.00 ---

	217.0	.0	.0	.0	.0	.0	.0	217.0
2003: 2003	---	<b>257,000.00</b>	<b>62,000.00</b>	---	---	---	---	<b>145,653.85</b>
	---	---	---	---	---	---	---	96,511.834
	.0	145.0	193.0	.0	.0	.0	.0	338.0
2004: 2004	---	<b>472,000.00</b>	<b>13,000.00</b>	---	---	---	<b>96,000.00</b>	<b>163,227.27</b>
	---	---	---	---	---	---	---	133,881.138
	.0	164.0	244.0	.0	.0	.0	208.0	616.0
2005: 2005	<b>24,729.28</b>	<b>94,300.00</b>	<b>415,800.00</b>	---	<b>218,055.56</b>	<b>63,094.34</b>	<b>76,020.00</b>	<b>116,059.35</b>
	27,039.539	---	---	---	78,309.196	14,999.703	---	42,691.889
	181.0	70.0	64.0	.0	108.0	159.0	93.0	675.0
2006: 2006	<b>186,619.14</b>	---	<b>115,602.39</b>	<b>209,575.12</b>	<b>104,000.00</b>	---	---	<b>149,738.77</b>
	139,239.997	---	14,283.909	144,753.745	---	---	---	34,566.235
	209.0	.0	503.0	217.0	77.0	.0	.0	1,006.0
2007: 2007	<b>292,884.85</b>	<b>150,000.00</b>	<b>88,915.44</b>	<b>141,000.00</b>	<b>113,375.00</b>	<b>56,200.00</b>	<b>97,000.00</b>	<b>132,470.74</b>
	206,572.385	---	31,358.490	---	4,362.303	---	---	33,761.524
	165.0	106.0	272.0	88.0	200.0	127.0	105.0	1,063.0
2008: 2008	---	<b>22,000.00</b>	<b>87,689.84</b>	<b>48,000.00</b>	<b>140,100.00</b>	<b>95,000.00</b>	<b>83,300.00</b>	<b>79,375.68</b>
	---	---	39,047.552	---	---	---	---	17,157.083
	.0	119.0	187.0	90.0	100.0	116.0	54.0	666.0
2009: 2009	<b>100,000.00</b>	<b>105,594.71</b>	<b>66,388.67</b>	---	<b>126,000.00</b>	<b>84,306.59</b>	<b>72,203.03</b>	<b>82,611.02</b>
	---	47,495.623	34,791.031	---	---	27,765.842	11,886.171	15,111.977
	104.0	227.0	512.0	.0	59.0	258.0	165.0	1,325.0
2010: 2010	<b>59,739.91</b>	<b>178,100.00</b>	<b>305,625.69</b>	---	<b>105,098.36</b>	<b>115,000.00</b>	<b>122,834.34</b>	<b>129,469.16</b>
	50,195.301	---	98,520.679	---	25,176.493	---	36,255.894	29,396.216
	446.0	54.0	218.0	.0	244.0	123.0	332.0	1,417.0
2011: 2011	---	<b>313,380.00</b>	<b>116,385.14</b>	---	<b>103,961.54</b>	<b>41,000.00</b>	<b>80,140.85</b>	<b>118,678.21</b>
	---	---	55,376.700	---	14,844.360	---	26,497.035	28,563.949
	.0	74.0	498.0	.0	234.0	56.0	142.0	1,004.0
2012: 2012	<b>88,197.15</b>	<b>220,000.00</b>	<b>102,170.37</b>	<b>38,100.00</b>	<b>91,222.42</b>	---	<b>147,229.04</b>	<b>107,728.49</b>
	29,480.343	---	44,208.417	---	8,908.973	---	77,521.856	23,066.614
	596.0	50.0	764.0	77.0	223.0	.0	489.0	2,199.0
2013: 2013	---	<b>100,534.48</b>	<b>129,863.64</b>	<b>58,000.00</b>	<b>125,849.53</b>	<b>51,061.06</b>	<b>55,526.47</b>	<b>103,416.63</b>
	---	24,329.431	33,206.631	---	16,934.719	10,429.407	21,085.352	15,192.927
	.0	464.0	1,320.0	76.0	537.0	606.0	218.0	3,221.0
2014: 2014	<b>181,365.00</b>	<b>53,281.98</b>	<b>207,949.54</b>	<b>80,400.00</b>	<b>192,521.74</b>	<b>56,679.25</b>	<b>77,768.70</b>	<b>129,834.02</b>
	139,498.223	18,414.406	25,859.135	---	185,511.014	11,148.692	9,567.958	21,588.908
	100.0	253.0	654.0	80.0	138.0	159.0	575.0	1,959.0
<b>COL TOTAL</b>	<b>104,101.65</b>	<b>155,097.25</b>	<b>122,287.84</b>	<b>86,883.30</b>	<b>125,072.81</b>	<b>64,065.72</b>	<b>95,023.22</b>	<b>111,517.48</b>
	26,717.571	33,160.543	15,036.663	35,813.192	14,128.886	7,546.859	16,128.412	7,891.536
	2,188.0	1,726.0	5,701.0	964.0	1,920.0	1,727.0	2,469.0	16,695.0

Color coding:	<-1.0	<-0.5	<0.0	>0.0	>0.5	>1.0	Z
Mean in each cell:	Smaller than average			Larger than average			

Chart for race = 9(Three or more major races)



Statistics for all valid cases

classwkrd



Cells contain:  
 -Means  
 -SRS Std  
 Errs  
 -Weighted N

	10	13	14	22	23	24	25	27	28	29
	Self- employed	Self- employed, not incorporated	Self- employed, incorporated	Wage/salary, private	Wage/salary at non-profit	Wage/salary, government	Federal govt employee	State govt employee	Local govt employee	Unpaid family worker
1950:	<b>6,751,689.04</b>	---	---	<b>6,981,015.55</b>	---	<b>5,666,579.33</b>	---	---	---	<b>9,999,999.</b>
1950	140,376.525	---	---	213,729.162	---	299,205.149	---	---	---	16:
	105,747.0	.0	.0	45,536.0	.0	28,955.0	.0	.0	.0	
1960:	<b>13,070.69</b>	---	---	<b>10,879.88</b>	---	<b>10,329.07</b>	---	---	---	<b>8,541.</b>
1960	214.070	---	---	328.352	---	313.982	---	---	---	5,223.9
	133,194.0	.0	.0	42,922.0	.0	32,882.0	.0	.0	.0	39:
1970:	---	<b>25,126.43</b>	<b>24,674.10</b>	<b>17,168.18</b>	---	---	<b>14,959.09</b>	<b>14,718.82</b>	<b>12,593.70</b>	<b>7,300.</b>
1970	---	391.293	1,592.995	424.938	---	---	536.799	668.284	830.256	6,733.1
	.0	140,200.0	8,300.0	70,400.0	.0	.0	17,600.0	9,300.0	13,500.0	30:
1980:	---	<b>38,307.87</b>	<b>46,823.07</b>	<b>27,286.26</b>	---	---	<b>27,103.86</b>	<b>22,009.05</b>	<b>21,936.51</b>	<b>2,182.</b>
1980	---	535.695	1,177.725	480.004	---	---	834.532	822.624	793.276	177.5
	.0	197,800.0	36,500.0	173,200.0	.0	.0	29,900.0	26,300.0	27,900.0	20:
1990:	---	<b>80,642.44</b>	<b>114,433.13</b>	<b>71,877.99</b>	<b>45,514.29</b>	---	<b>49,540.63</b>	<b>43,350.84</b>	<b>42,583.62</b>	<b>4,741.</b>
1990	---	1,198.295	2,590.847	1,072.488	2,478.131	---	1,667.529	1,240.920	1,176.322	4,636.4
	.0	213,282.0	77,083.0	307,437.0	19,947.0	.0	30,833.0	35,585.0	40,434.0	74:
2000:	---	<b>115,915.78</b>	<b>157,287.38</b>	<b>120,903.60</b>	<b>71,579.48</b>	---	<b>78,075.37</b>	<b>61,492.21</b>	<b>63,444.95</b>	<b>43,394.</b>
2000	---	2,137.597	3,739.895	1,865.565	3,926.775	---	2,186.226	1,679.037	1,739.314	27,056.8
	.0	235,701.0	113,691.0	352,833.0	22,253.0	.0	36,520.0	48,893.0	48,474.0	64:
2001:	---	<b>111,295.94</b>	<b>148,175.38</b>	<b>132,755.25</b>	<b>85,230.16</b>	---	<b>89,208.89</b>	<b>68,468.66</b>	<b>73,475.31</b>	<b>33,629.</b>
2001	---	2,380.753	4,885.037	2,752.597	6,514.675	---	2,845.067	2,997.317	2,352.013	4,174.6
	.0	216,928.0	114,924.0	358,496.0	24,186.0	.0	31,621.0	46,681.0	55,027.0	85:
2002:	---	<b>113,893.68</b>	<b>154,303.75</b>	<b>135,067.91</b>	<b>73,804.13</b>	---	<b>96,245.68</b>	<b>66,297.54</b>	<b>69,567.94</b>	<b>67,966.</b>
2002	---	2,601.288	5,461.865	2,986.312	4,548.063	---	3,492.734	3,202.310	2,707.662	17,431.0
	.0	216,367.0	121,542.0	348,245.0	20,490.0	.0	42,781.0	51,400.0	48,168.0	1,28:
2003:	---	<b>113,331.67</b>	<b>164,680.62</b>	<b>134,451.29</b>	<b>90,696.48</b>	---	<b>91,677.19</b>	<b>69,776.15</b>	<b>79,270.53</b>	<b>76,251.</b>
2003	---	2,465.115	5,124.437	2,499.668	7,425.907	---	2,551.125	2,133.736	2,445.726	35,858.7
	.0	200,496.0	124,374.0	392,850.0	22,514.0	.0	36,734.0	42,339.0	58,886.0	1,20:
2004:	---	<b>127,849.22</b>	<b>140,758.13</b>	<b>133,988.73</b>	<b>88,351.30</b>	---	<b>103,222.04</b>	<b>77,245.77</b>	<b>80,659.77</b>	<b>29,259.</b>
2004	---	3,146.753	3,463.537	2,023.042	6,473.231	---	3,787.480	3,211.472	3,458.938	11,867.1
	.0	220,578.0	143,177.0	411,049.0	22,274.0	.0	42,757.0	52,382.0	51,939.0	75:
2005:	---	<b>137,689.32</b>	<b>170,966.55</b>	<b>148,010.47</b>	<b>105,409.76</b>	---	<b>105,946.01</b>	<b>86,431.20</b>	<b>80,065.68</b>	<b>68,944.</b>
2005	---	2,492.643	3,420.855	1,875.906	6,652.339	---	2,562.689	1,639.935	2,032.365	20,372.5
	.0	196,680.0	141,068.0	413,766.0	23,341.0	.0	58,981.0	81,995.0	76,423.0	31:
2006:	---	<b>140,934.43</b>	<b>190,543.64</b>	<b>154,592.91</b>	<b>99,458.46</b>	---	<b>108,012.16</b>	<b>86,572.77</b>	<b>85,921.59</b>	<b>160,274.</b>
2006	---	2,587.538	3,753.653	1,881.762	5,284.506	---	1,945.820	1,885.059	2,145.282	62,237.7
	.0	193,958.0	141,373.0	421,535.0	26,174.0	.0	54,228.0	79,806.0	74,226.0	32:
2007:	---	<b>142,975.76</b>	<b>181,007.81</b>	<b>163,538.92</b>	<b>98,280.12</b>	---	<b>115,479.49</b>	<b>87,849.36</b>	<b>86,511.13</b>	<b>61,687.</b>
2007	---	2,652.452	3,698.804	2,047.795	4,839.595	---	2,027.457	1,785.573	2,075.720	23,362.2
	.0	197,251.0	159,467.0	426,828.0	28,391.0	.0	59,183.0	81,338.0	82,457.0	1,02:
2008:	---	<b>149,687.47</b>	<b>190,878.79</b>	<b>172,908.58</b>	<b>111,680.33</b>	---	<b>114,132.38</b>	<b>90,602.60</b>	<b>86,358.04</b>	<b>13,236.</b>
2008	---	2,960.789	4,001.816	2,089.963	6,030.673	---	2,070.049	1,726.711	1,934.822	4,918.6
	.0	191,614.0	144,367.0	471,305.0	28,983.0	.0	52,447.0	88,125.0	87,896.0	36:
2009:	---	<b>139,205.31</b>	<b>179,389.38</b>	<b>175,612.03</b>	<b>103,384.46</b>	---	<b>117,609.82</b>	<b>92,505.15</b>	<b>92,736.52</b>	<b>21,950.</b>
2009	---	2,728.466	3,800.255	2,041.479	4,981.880	---	2,542.377	1,902.344	2,136.781	4,415.2
	.0	179,507.0	149,959.0	472,176.0	32,149.0	.0	59,296.0	84,216.0	94,028.0	29:
2010:	---	<b>131,725.12</b>	<b>178,201.30</b>	<b>171,489.87</b>	<b>109,007.92</b>	---	<b>117,972.82</b>	<b>91,411.63</b>	<b>92,189.25</b>	<b>15,351.</b>
2010	---	2,525.545	3,428.888	1,951.247	5,042.254	---	2,128.980	1,675.318	2,081.979	4,720.3
	.0	183,327.0	145,764.0	450,730.0	27,652.0	.0	59,961.0	93,426.0	84,378.0	18:
2011:	---	<b>132,081.26</b>	<b>173,711.92</b>	<b>171,059.05</b>	<b>114,569.52</b>	---	<b>123,462.91</b>	<b>98,510.51</b>	<b>89,891.96</b>	<b>95,105.</b>
2011	---	2,708.996	3,531.156	1,940.274	5,155.359	---	2,265.543	2,094.794	1,662.860	27,080.9
	.0	174,957.0	154,286.0	468,363.0	31,497.0	.0	68,009.0	90,880.0	80,609.0	31:
2012:	---	<b>139,798.25</b>	<b>179,255.76</b>	<b>170,521.24</b>	<b>92,766.61</b>	---	<b>120,162.35</b>	<b>93,633.91</b>	<b>99,189.86</b>	<b>125,342.</b>
2012	---	2,829.179	3,568.817	1,937.096	4,129.772	---	2,038.392	1,902.306	2,372.886	90,956.1
	.0	188,230.0	158,267.0	467,528.0	35,166.0	.0	65,920.0	84,249.0	81,355.0	69:
2013:	---	<b>141,063.66</b>	<b>190,435.47</b>	<b>181,952.46</b>	<b>101,980.95</b>	---	<b>123,438.35</b>	<b>95,248.61</b>	<b>96,592.14</b>	<b>20,879.</b>
2013	---	2,977.134	3,955.336	2,120.938	4,143.413	---	2,222.644	1,894.757	2,386.332	7,778.3
	.0	174,705.0	154,996.0	494,462.0	34,972.0	.0	62,551.0	91,507.0	81,534.0	69:
2014:	---	<b>144,006.50</b>	<b>175,802.73</b>	<b>180,112.01</b>	<b>108,665.15</b>	---	<b>121,812.47</b>	<b>97,052.32</b>	<b>99,539.09</b>	<b>42,784.</b>
2014	---	3,117.596	3,656.435	2,067.748	4,632.733	---	2,321.941	1,940.925	2,118.652	9,164.7
	.0	167,170.0	160,084.0	523,258.0	35,451.0	.0	62,172.0	90,309.0	75,024.0	50:
<b>COL</b>	<b>2,995,349.47</b>	<b>118,640.96</b>	<b>168,156.09</b>	<b>193,105.51</b>	<b>96,000.63</b>	<b>2,658,852.22</b>	<b>104,140.89</b>	<b>83,689.63</b>	<b>82,777.46</b>	<b>197,370.</b>
	92,380.698	609.974	962.560	2,683.388	1,321.872	179,457.981	633.086	516.817	561.227	129,259.0

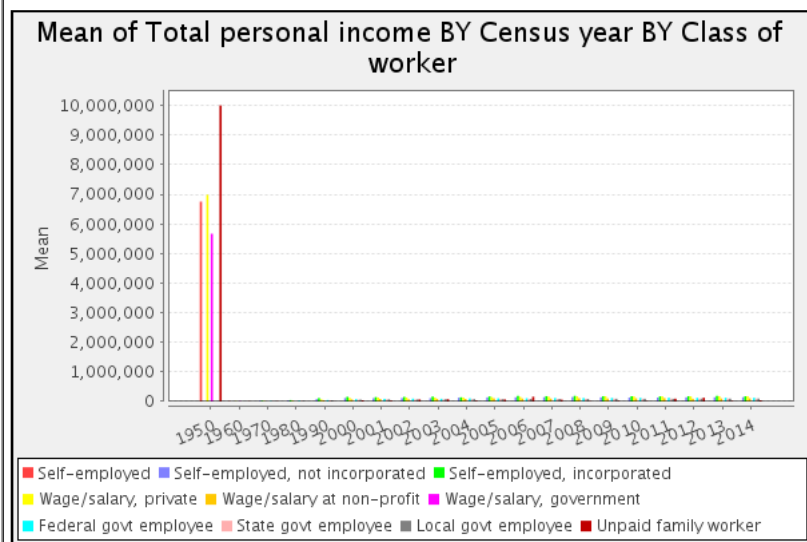
year



TOTAL	238,941.0	3,488,751.0	2,249,222.0	7,112,919.0	435,440.0	61,837.0	871,494.0	1,178,731.0	1,162,258.0	11,24
-------	-----------	-------------	-------------	-------------	-----------	----------	-----------	-------------	-------------	-------

Color coding:	<-1.0	<-0.5	<0.0	>0.0	>0.5	>1.0	Z
Mean in each cell:	Smaller than average			Larger than average			

Chart for all valid cases



Allocation of cases (unweighted)

Valid cases	154,035
Cases excluded by filters or weight	55,596,674
Total cases	55,750,709

Datasets

- 1 /share/htdocs/all\_usa\_samples
- 2 /sda\_support/newvars/all\_usa\_samples

CSM, UC Berkeley

SDA 3.5: Means

United States 1850-2014

Jul 21, 2016 (Thu 09:54 PM CDT)

Variables					
Role	Name	Label	Range	MD	Dataset
Dependent	inctot	Total personal income	-20000-9999999		1
Row	year	Census year	1850-2014		1
Column	classwkrd	Class of worker	0-29		1
Control	sex	Sex	1-2		1
Weight	perwt	Person weight	.00-4,044.00		1
Filter	empstat(1)	Employment status(=Employed)	0-3		1
Filter	occ1990(178)	Occupation, 1990 basis(=Lawyers)	3-999		1

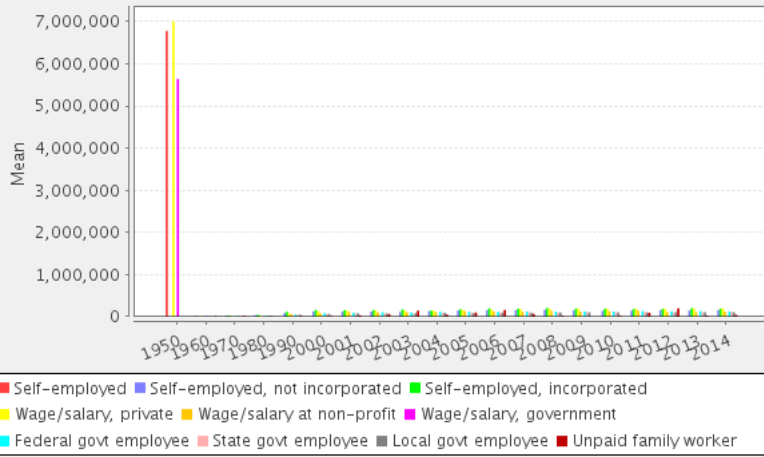
Statistics for sex = 1(Male)											
		classwkrd									
Cells contain: -Means -SRS Std Errs -Weighted N		10 Self-employed	13 Self-employed, not incorporated	14 Self-employed, incorporated	22 Wage/salary, private	23 Wage/salary at non-profit	24 Wage/salary, government	25 Federal govt employee	27 State govt employee	28 Local govt employee	29 Unpaic family worker
1950:	<b>6,781,372.49</b>	---	---	---	<b>7,009,927.05</b>	---	<b>5,642,761.75</b>	---	---	---	---
1950	141,123.268	---	---	---	217,427.700	---	309,737.170	---	---	---	---
	104,126.0	.0	.0	.0	43,512.0	.0	26,966.0	.0	.0	.0	.0
1960:	<b>13,306.66</b>	---	---	---	<b>11,102.56</b>	---	<b>10,493.37</b>	---	---	---	<b>11,407</b>

year	1960	215.479 129,701.0	---	---	336.063 40,931.0	---	322.783 31,290.0	---	---	---	6,190.5 29	
	1970: 1970	---	<b>25,503.01</b> 395.784 136,200.0	<b>25,040.12</b> 1,611.144 8,100.0	<b>17,686.61</b> 441.580 65,700.0	---	---	<b>15,320.06</b> 583.774 15,700.0	<b>15,179.27</b> 724.895 8,200.0	<b>13,243.80</b> 888.857 12,100.0	<b>20,750</b> 10	
	1980: 1980	---	<b>39,391.52</b> 546.904 188,000.0	<b>47,735.03</b> 1,179.887 35,100.0	<b>29,750.83</b> 548.422 139,900.0	---	---	---	<b>29,228.67</b> 965.155 21,800.0	<b>24,066.98</b> 918.941 20,500.0	<b>24,884.36</b> 937.502 20,400.0	
	1990: 1990	---	<b>84,758.39</b> 1,289.364 184,852.0	<b>118,502.87</b> 2,689.669 70,857.0	<b>81,884.61</b> 1,358.549 217,412.0	<b>53,791.96</b> 3,638.806 11,519.0	---	---	<b>53,905.19</b> 2,249.079 20,154.0	<b>47,050.03</b> 1,696.162 21,785.0	<b>47,504.14</b> 1,619.994 23,829.0	<b>11,605</b> 10,863.7 30
	2000: 2000	---	<b>124,300.47</b> 2,448.173 189,259.0	<b>163,802.10</b> 4,065.723 97,517.0	<b>135,152.62</b> 2,403.192 243,945.0	<b>84,424.00</b> 7,425.312 9,990.0	---	---	<b>85,078.40</b> 2,950.571 20,143.0	<b>64,924.66</b> 2,386.338 25,634.0	<b>68,083.96</b> 2,528.605 28,263.0	<b>17,458</b> 14,027.4 41
	2001: 2001	---	<b>119,712.40</b> 2,645.790 174,657.0	<b>157,393.19</b> 5,453.182 96,932.0	<b>148,482.65</b> 3,578.995 241,920.0	<b>110,725.56</b> 12,821.129 11,116.0	---	---	<b>93,370.50</b> 4,019.487 19,520.0	<b>77,623.19</b> 4,833.251 26,995.0	<b>78,760.16</b> 3,121.736 29,105.0	<b>33,629</b> 4,174.6 85
	2002: 2002	---	<b>122,348.33</b> 2,895.996 171,490.0	<b>163,149.24</b> 6,045.843 105,178.0	<b>150,260.46</b> 3,962.609 233,269.0	<b>94,861.00</b> 7,025.025 9,919.0	---	---	<b>103,582.84</b> 5,122.415 24,923.0	<b>76,176.83</b> 5,191.504 27,569.0	<b>76,476.84</b> 3,817.783 26,740.0	<b>67,966</b> 17,431.0 1,28
	2003: 2003	---	<b>118,339.75</b> 2,743.875 161,409.0	<b>174,137.54</b> 5,592.815 103,975.0	<b>151,721.96</b> 3,240.824 256,686.0	<b>106,064.06</b> 12,730.955 10,360.0	---	---	<b>100,294.52</b> 3,028.459 22,234.0	<b>75,340.26</b> 2,518.603 22,796.0	<b>85,540.50</b> 3,256.736 31,766.0	<b>145,873</b> 41,637.4 59
	2004: 2004	---	<b>136,613.52</b> 3,556.374 175,438.0	<b>145,620.96</b> 3,674.523 121,444.0	<b>144,829.17</b> 2,494.328 273,889.0	<b>105,568.80</b> 10,107.411 10,863.0	---	---	<b>117,209.14</b> 5,889.744 22,122.0	<b>86,081.32</b> 5,315.890 22,948.0	<b>96,810.56</b> 5,474.794 26,805.0	<b>52,110</b> 10,608.4 34
	2005: 2005	---	<b>149,625.68</b> 2,871.127 153,861.0	<b>178,741.66</b> 3,715.169 118,835.0	<b>165,402.51</b> 2,490.968 266,685.0	<b>137,806.31</b> 10,856.323 9,780.0	---	---	<b>121,157.04</b> 4,001.156 32,781.0	<b>96,819.57</b> 2,373.334 45,947.0	<b>86,672.03</b> 2,948.547 42,908.0	<b>100,000</b> 12
	2006: 2006	---	<b>155,588.73</b> 2,987.558 152,645.0	<b>198,617.58</b> 4,117.625 120,281.0	<b>174,342.23</b> 2,474.575 279,231.0	<b>127,240.28</b> 9,384.354 11,913.0	---	---	<b>118,917.91</b> 2,796.898 29,870.0	<b>98,167.05</b> 2,874.400 44,472.0	<b>97,890.55</b> 3,269.607 40,854.0	<b>160,274</b> 62,237.7 32
	2007: 2007	---	<b>155,869.97</b> 3,097.792 152,945.0	<b>190,810.23</b> 4,171.870 132,477.0	<b>184,756.25</b> 2,747.165 272,683.0	<b>123,364.67</b> 9,968.231 11,966.0	---	---	<b>124,315.09</b> 2,967.991 32,705.0	<b>100,700.66</b> 2,580.336 45,727.0	<b>97,402.64</b> 3,165.203 46,022.0	<b>68,458</b> 30,428.3 63
	2008: 2008	---	<b>165,655.28</b> 3,466.562 146,023.0	<b>207,237.68</b> 4,532.833 115,803.0	<b>197,793.53</b> 2,792.379 297,944.0	<b>143,275.65</b> 11,595.109 11,984.0	---	---	<b>124,278.81</b> 2,767.254 29,111.0	<b>98,022.25</b> 2,123.495 47,522.0	<b>100,688.21</b> 2,948.856 48,682.0	<b>21,834</b> 10,416.6 13
	2009: 2009	---	<b>151,647.91</b> 3,185.403 138,409.0	<b>194,643.69</b> 4,343.265 120,420.0	<b>194,518.48</b> 2,632.673 311,848.0	<b>119,203.60</b> 7,987.321 15,277.0	---	---	<b>125,903.00</b> 3,726.245 32,953.0	<b>104,924.38</b> 2,730.820 45,399.0	<b>103,981.18</b> 3,503.864 47,485.0	
	2010: 2010	---	<b>141,501.05</b> 2,919.886 143,762.0	<b>189,116.20</b> 3,847.647 119,105.0	<b>189,950.31</b> 2,577.481 293,882.0	<b>131,226.88</b> 7,929.831 11,682.0	---	---	<b>123,136.48</b> 2,746.676 31,874.0	<b>105,057.86</b> 2,534.276 48,278.0	<b>103,644.31</b> 2,881.580 44,234.0	<b>22,000</b> 6
	2011: 2011	---	<b>144,569.76</b> 3,218.799 130,840.0	<b>184,186.50</b> 4,035.425 122,523.0	<b>190,566.07</b> 2,522.822 298,899.0	<b>146,464.02</b> 10,084.782 13,362.0	---	---	<b>135,270.80</b> 3,397.572 38,377.0	<b>114,485.76</b> 3,110.364 48,399.0	<b>100,510.22</b> 2,527.372 42,809.0	<b>95,105</b> 27,080.9 31
	2012: 2012	---	<b>156,127.11</b> 3,412.035 136,393.0	<b>189,675.68</b> 4,030.987 129,794.0	<b>190,787.74</b> 2,565.796 294,319.0	<b>111,516.82</b> 7,974.886 13,550.0	---	---	<b>128,835.26</b> 2,910.942 35,823.0	<b>105,752.47</b> 2,879.818 44,469.0	<b>110,853.66</b> 3,638.795 42,397.0	<b>198,690</b> 154,254.8 40
	2013: 2013	---	<b>152,305.66</b> 3,491.578 130,245.0	<b>202,440.08</b> 4,562.206 124,642.0	<b>201,990.06</b> 2,788.185 314,911.0	<b>109,930.86</b> 7,111.351 14,743.0	---	---	<b>136,247.79</b> 3,538.955 32,554.0	<b>109,216.02</b> 3,014.428 45,697.0	<b>107,886.50</b> 3,755.302 41,200.0	<b>25,114</b> 7,945.5 56
	2014: 2014	---	<b>159,397.78</b> 3,758.662 120,207.0	<b>189,157.98</b> 4,189.455 126,446.0	<b>202,598.70</b> 2,767.820 326,254.0	<b>125,266.07</b> 7,950.016 16,574.0	---	---	<b>127,943.39</b> 3,327.778 33,874.0	<b>110,373.35</b> 2,792.565 44,435.0	<b>106,937.04</b> 3,090.317 39,749.0	<b>46,677</b> 3,178.3 46
	<b>COL TOTAL</b>	<b>3,027,208.49</b> 93,657.838 233,827.0	<b>125,732.48</b> 697.090 2,786,635.0	<b>177,146.71</b> 1,075.304 1,869,429.0	<b>227,534.71</b> 3,937.202 4,713,820.0	<b>115,397.86</b> 2,322.001 194,598.0	<b>2,617,602.49</b> 183,797.276 58,256.0	<b>110,291.81</b> 918.938 496,518.0	<b>93,042.96</b> 764.487 636,772.0	<b>90,810.93</b> 837.388 635,348.0	<b>68,524</b> 12,745.8 7,23	

Color coding:	<-1.0	<-0.5	<0.0	>0.0	>0.5	>1.0	Z
Mean in each cell:	Smaller than average			Larger than average			

Chart for sex = 1(Male)

### Mean of Total personal income BY Census year BY Class of worker



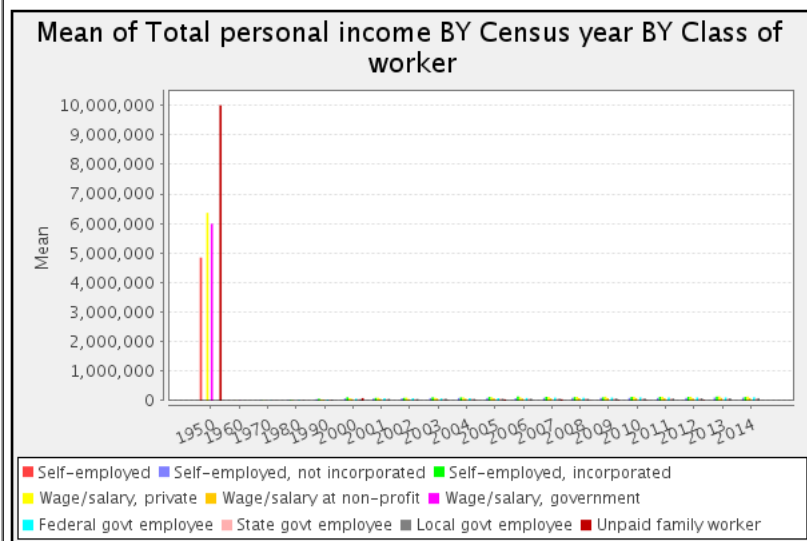
### Statistics for sex = 2(Female)

Cells contain: -Means -SRS Std Errs -Weighted N		classwkrd									
		10 Self-employed	13 Self- employed, not incorporated	14 Self- employed, incorporated	22 Wage/salary, private	23 Wage/salary at non-profit	24 Wage/salary, government	25 Federal govt employee	27 State govt employee	28 Local govt employee	29 Unpaid family worker
year	1950: 1950	<b>4,844,952.66</b> 1,248,832.860 1,621.0	---	---	<b>6,359,475.45</b> 1,166,795.970 2,024.0	---	<b>5,989,487.79</b> 1,188,309.906 1,989.0	---	---	---	<b>9,999,999</b> ---
	1960: 1960	<b>4,308.65</b> 611.158 3,493.0	---	---	<b>6,301.96</b> 1,159.212 1,991.0	---	<b>7,099.78</b> 1,095.502 1,592.0	---	---	---	---
	1970: 1970	---	<b>12,303.75</b> 1,518.752 4,000.0	<b>9,850.00</b> 200.000 200.0	<b>9,921.28</b> 1,113.853 4,700.0	---	---	<b>11,976.32</b> 995.512 1,900.0	<b>11,286.36</b> 1,293.218 1,100.0	<b>6,975.00</b> 1,665.757 1,400.0	<b>575</b> 575.0 20
	1980: 1980	---	<b>17,519.59</b> 1,487.964 9,800.0	<b>23,958.93</b> 5,570.414 1,400.0	<b>16,932.12</b> 726.381 33,300.0	---	---	<b>21,385.25</b> 1,488.370 8,100.0	<b>14,735.34</b> 1,493.848 5,800.0	<b>13,918.33</b> 1,023.752 7,500.0	<b>2,182</b> 177.5 20
	1990: 1990	---	<b>53,880.46</b> 2,751.616 28,430.0	<b>68,116.12</b> 7,333.741 6,226.0	<b>47,711.84</b> 1,275.566 90,025.0	<b>34,200.76</b> 2,648.105 8,428.0	---	<b>41,303.58</b> 2,060.908 10,679.0	<b>37,511.21</b> 1,644.479 13,800.0	<b>35,522.42</b> 1,507.963 16,605.0	---
	2000: 2000	---	<b>81,746.74</b> 3,868.322 46,442.0	<b>118,008.57</b> 8,848.587 16,174.0	<b>88,981.10</b> 2,475.561 108,888.0	<b>61,115.74</b> 3,353.809 12,263.0	---	<b>69,461.94</b> 3,118.642 16,377.0	<b>57,709.27</b> 2,326.976 23,259.0	<b>56,957.78</b> 2,129.445 20,211.0	<b>91,678</b> 63,744.2 22
	2001: 2001	---	<b>76,520.47</b> 4,716.064 42,271.0	<b>98,514.40</b> 8,854.746 17,992.0	<b>100,117.57</b> 3,696.661 116,576.0	<b>63,546.40</b> 4,543.876 13,070.0	---	<b>82,495.84</b> 3,774.243 12,101.0	<b>55,915.25</b> 2,151.162 19,686.0	<b>67,541.52</b> 3,484.893 25,922.0	---
	2002: 2002	---	<b>81,585.62</b> 5,289.252 44,877.0	<b>97,450.25</b> 9,682.026 16,364.0	<b>104,244.50</b> 3,817.246 114,976.0	<b>54,046.01</b> 3,969.648 10,571.0	---	<b>86,005.78</b> 4,322.474 17,858.0	<b>54,868.64</b> 2,766.914 23,831.0	<b>60,946.32</b> 3,496.764 21,428.0	---
	2003: 2003	---	<b>92,650.90</b> 5,364.653 39,087.0	<b>116,478.11</b> 11,616.248 20,399.0	<b>101,893.94</b> 3,448.711 136,164.0	<b>77,597.24</b> 8,186.409 12,154.0	---	<b>78,463.55</b> 4,113.356 14,500.0	<b>63,285.89</b> 3,508.274 19,543.0	<b>71,926.44</b> 3,592.491 27,120.0	<b>8,676</b> 4,057.9 61
	2004: 2004	---	<b>93,786.53</b> 6,224.588 45,140.0	<b>113,584.67</b> 9,505.778 21,733.0	<b>112,341.91</b> 3,278.394 137,160.0	<b>71,960.65</b> 7,716.571 11,411.0	---	<b>88,227.01</b> 4,229.397 20,635.0	<b>70,357.20</b> 3,869.075 29,434.0	<b>63,435.21</b> 3,428.725 25,134.0	<b>9,371</b> 2,780.7 40
	2005: 2005	---	<b>94,798.55</b> 4,455.007 42,819.0	<b>129,408.68</b> 8,274.281 22,233.0	<b>116,475.48</b> 2,535.091 147,081.0	<b>82,045.82</b> 7,770.666 13,561.0	---	<b>86,914.22</b> 2,458.792 26,200.0	<b>73,190.12</b> 2,010.222 36,048.0	<b>71,607.81</b> 2,648.374 33,515.0	<b>46,931</b> 21,903.2 18
	2006: 2006	---	<b>86,789.12</b> 4,222.584 41,313.0	<b>144,500.48</b> 8,517.713 21,092.0	<b>115,840.50</b> 2,442.845 142,304.0	<b>76,250.78</b> 5,018.652 14,261.0	---	<b>94,638.54</b> 2,401.771 24,358.0	<b>71,979.99</b> 1,959.687 35,334.0	<b>71,269.19</b> 2,394.400 33,372.0	---
	2007: 2007	---	<b>98,464.76</b> 4,465.543 44,306.0	<b>132,893.88</b> 7,092.654 26,990.0	<b>126,005.38</b> 2,660.131 154,145.0	<b>80,005.42</b> 3,817.380 16,425.0	---	<b>104,565.96</b> 2,563.272 26,478.0	<b>71,347.39</b> 2,076.391 35,611.0	<b>72,753.78</b> 2,255.579 36,435.0	<b>50,485</b> 43,662.7 38
	2008:	---	<b>98,544.32</b>	<b>124,557.21</b>	<b>130,140.48</b>	<b>89,406.18</b>	---	<b>101,474.99</b>	<b>81,918.60</b>	<b>68,567.92</b>	<b>8,040</b>

2008	---	4,903.941	7,354.113	2,736.384	5,765.670	---	2,950.240	2,752.455	2,004.850	2,999.3	
	.0	45,591.0	28,564.0	173,361.0	16,999.0	.0	23,336.0	40,603.0	39,214.0	22	
2009:	---	<b>97,301.36</b>	<b>117,203.00</b>	<b>138,837.80</b>	<b>89,060.78</b>	---	<b>107,235.72</b>	<b>77,980.06</b>	<b>81,264.28</b>	<b>21,950</b>	
2009	---	4,650.193	6,558.322	2,935.274	5,967.089	---	3,213.973	2,426.013	2,273.759	4,415.2	
	.0	41,098.0	29,539.0	160,328.0	16,872.0	.0	26,343.0	38,817.0	46,543.0	29	
2010:	---	<b>96,203.60</b>	<b>129,436.58</b>	<b>136,901.03</b>	<b>92,754.82</b>	---	<b>112,112.93</b>	<b>76,819.34</b>	<b>79,567.11</b>	<b>12,000</b>	
2010	---	4,570.516	6,832.912	2,650.696	6,268.461	---	3,284.826	1,950.168	2,890.804	12	
	.0	39,565.0	26,659.0	156,848.0	15,970.0	.0	28,087.0	45,148.0	40,144.0		
2011:	---	<b>95,043.50</b>	<b>133,307.17</b>	<b>136,652.77</b>	<b>91,069.42</b>	---	<b>108,170.28</b>	<b>80,309.75</b>	<b>77,866.64</b>		
2011	---	4,521.474	6,761.602	2,795.371	4,335.455	---	2,546.843	2,496.506	1,919.497		
	.0	44,117.0	31,763.0	169,464.0	18,135.0	.0	29,632.0	42,481.0	37,800.0		
2012:	---	<b>96,833.92</b>	<b>131,756.61</b>	<b>136,084.15</b>	<b>81,013.03</b>	---	<b>109,839.41</b>	<b>80,086.90</b>	<b>86,496.43</b>	<b>20,961</b>	
2012	---	4,450.849	6,850.198	2,676.532	4,320.519	---	2,718.828	2,229.805	2,878.368	8,393.5	
	.0	51,837.0	28,473.0	173,209.0	21,616.0	.0	30,097.0	39,780.0	38,958.0	28	
2013:	---	<b>108,130.37</b>	<b>141,141.21</b>	<b>146,808.90</b>	<b>96,187.01</b>	---	<b>109,537.01</b>	<b>81,315.66</b>	<b>85,055.29</b>	<b>2,300</b>	
2013	---	5,421.891	6,950.516	3,018.687	4,898.803	---	2,383.723	2,115.082	2,798.883		
	.0	44,460.0	30,354.0	179,551.0	20,229.0	.0	29,997.0	45,810.0	40,334.0	12	
2014:	---	<b>104,610.82</b>	<b>125,600.08</b>	<b>142,872.30</b>	<b>94,089.55</b>	---	<b>114,473.47</b>	<b>84,149.15</b>	<b>91,202.86</b>	<b>2,000</b>	
2014	---	5,120.591	6,816.183	2,822.855	5,054.581	---	3,153.454	2,566.368	2,793.036		
	.0	46,963.0	33,638.0	197,004.0	18,877.0	.0	28,298.0	45,874.0	35,275.0	4	
<b>COL TOTAL</b>		<b>1,538,662.18</b>	<b>90,495.33</b>	<b>123,902.19</b>	<b>125,458.01</b>		<b>3,329,906.19</b>	<b>95,996.24</b>	<b>72,699.99</b>	<b>73,090.70</b>	<b>429,666</b>
		504,539.420	1,173.812	1,964.770	1,741.563		819,656.592	813.440	640.540	689.170	339,921.6
		5,114.0	702,116.0	379,793.0	2,399,099.0		3,581.0	374,976.0	541,959.0	526,910.0	4,01

Color coding:	<-1.0	<-0.5	<0.0	>0.0	>0.5	>1.0	Z
Mean in each cell:	Smaller than average			Larger than average			

Chart for sex = 2(Female)



Statistics for all valid cases

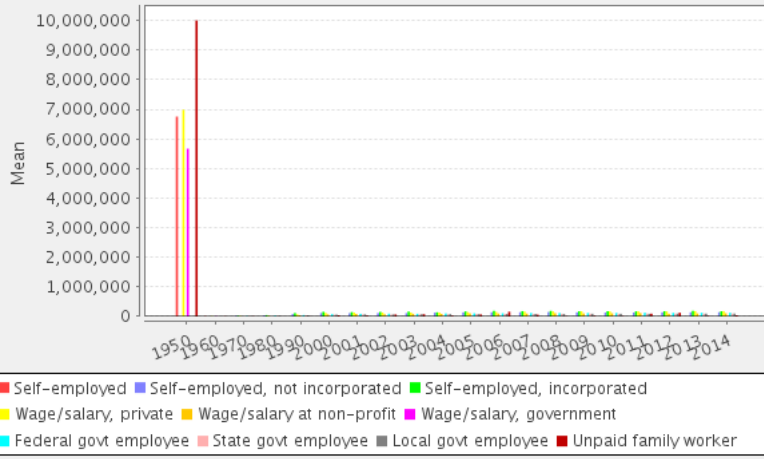
Cells contain:		classwkrd									
-Means	-SRS Std	10 Self-employed	13 Self-employed, not incorporated	14 Self-employed, incorporated	22 Wage/salary, private	23 Wage/salary at non-profit	24 Wage/salary, government	25 Federal gov employee	27 State gov employee	28 Local gov employee	29 Unpaid family worker
Errs	-Weighted N										
		<b>6,751,689.04</b>	---	---	<b>6,981,015.55</b>	---	<b>5,666,579.33</b>	---	---	---	<b>9,999,999</b>
		140,376.525	---	---	213,729.162	---	299,205.149	---	---	---	16
		105,747.0	.0	.0	45,536.0	.0	28,955.0	.0	.0	.0	
		<b>13,070.69</b>	---	---	<b>10,879.88</b>	---	<b>10,329.07</b>	---	---	---	<b>8,541</b>
		214.070	---	---	328.352	---	313.982	---	---	---	5,223.9
		133,194.0	.0	.0	42,922.0	.0	32,882.0	.0	.0	.0	39
		---	<b>25,126.43</b>	<b>24,674.10</b>	<b>17,168.18</b>	---	---	<b>14,959.09</b>	<b>14,718.82</b>	<b>12,593.70</b>	<b>7,300</b>
		---	391.293	1,592.995	424.938	---	---	536.799	668.284	830.256	6,733.1
		.0	140,200.0	8,300.0	70,400.0	.0	.0	17,600.0	9,300.0	13,500.0	30
		---	<b>38,307.87</b>	<b>46,823.07</b>	<b>27,286.26</b>	---	---	<b>27,103.86</b>	<b>22,009.05</b>	<b>21,936.51</b>	<b>2,182</b>
		---	535.695	1,177.725	480.004	---	---	834.532	822.624	793.276	177.5
		.0	197,800.0	36,500.0	173,200.0	.0	.0	29,900.0	26,300.0	27,900.0	20

year	1990:	---	<b>80,642.44</b>	<b>114,433.13</b>	<b>71,877.99</b>	<b>45,514.29</b>	---	<b>49,540.63</b>	<b>43,350.84</b>	<b>42,583.62</b>	<b>4,741</b>
	1990	---	1,198.295	2,590.847	1,072.488	2,478.131	---	1,667.529	1,240.920	1,176.322	4,636.4
		.0	213,282.0	77,083.0	307,437.0	19,947.0	.0	30,833.0	35,585.0	40,434.0	74
	2000:	---	<b>115,915.78</b>	<b>157,287.38</b>	<b>120,903.60</b>	<b>71,579.48</b>	---	<b>78,075.37</b>	<b>61,492.21</b>	<b>63,444.95</b>	<b>43,394</b>
	2000	---	2,137.597	3,739.895	1,865.565	3,926.775	---	2,186.226	1,679.037	1,739.314	27,056.8
		.0	235,701.0	113,691.0	352,833.0	22,253.0	.0	36,520.0	48,893.0	48,474.0	64
	2001:	---	<b>111,295.94</b>	<b>148,175.38</b>	<b>132,755.25</b>	<b>85,230.16</b>	---	<b>89,208.89</b>	<b>68,468.66</b>	<b>73,475.31</b>	<b>33,629</b>
	2001	---	2,380.753	4,885.037	2,752.597	6,514.675	---	2,845.067	2,997.317	2,352.013	4,174.6
		.0	216,928.0	114,924.0	358,496.0	24,186.0	.0	31,621.0	46,681.0	55,027.0	85
	2002:	---	<b>113,893.68</b>	<b>154,303.75</b>	<b>135,067.91</b>	<b>73,804.13</b>	---	<b>96,245.68</b>	<b>66,297.54</b>	<b>69,567.94</b>	<b>67,966</b>
	2002	---	2,601.288	5,461.865	2,986.312	4,548.063	---	3,492.734	3,202.310	2,707.662	17,431.0
		.0	216,367.0	121,542.0	348,245.0	20,490.0	.0	42,781.0	51,400.0	48,168.0	1,28
	2003:	---	<b>113,331.67</b>	<b>164,680.62</b>	<b>134,451.29</b>	<b>90,696.48</b>	---	<b>91,677.19</b>	<b>69,776.15</b>	<b>79,270.53</b>	<b>76,251</b>
	2003	---	2,465.115	5,124.437	2,499.668	7,425.907	---	2,551.125	2,133.736	2,445.726	35,858.7
		.0	200,496.0	124,374.0	392,850.0	22,514.0	.0	36,734.0	42,339.0	58,886.0	1,20
	2004:	---	<b>127,849.22</b>	<b>140,758.13</b>	<b>133,988.73</b>	<b>88,351.30</b>	---	<b>103,222.04</b>	<b>77,245.77</b>	<b>80,659.77</b>	<b>29,259</b>
	2004	---	3,146.753	3,463.537	2,023.042	6,473.231	---	3,787.480	3,211.472	3,458.938	11,867.1
	.0	220,578.0	143,177.0	411,049.0	22,274.0	.0	42,757.0	52,382.0	51,939.0	75	
2005:	---	<b>137,689.32</b>	<b>170,966.55</b>	<b>148,010.47</b>	<b>105,409.76</b>	---	<b>105,946.01</b>	<b>86,431.20</b>	<b>80,065.68</b>	<b>68,944</b>	
2005	---	2,492.643	3,420.855	1,875.906	6,652.339	---	2,562.689	1,639.935	2,032.365	20,372.5	
	.0	196,680.0	141,068.0	413,766.0	23,341.0	.0	58,981.0	81,995.0	76,423.0	31	
2006:	---	<b>140,934.43</b>	<b>190,543.64</b>	<b>154,592.91</b>	<b>99,458.46</b>	---	<b>108,012.16</b>	<b>86,572.77</b>	<b>85,921.59</b>	<b>160,274</b>	
2006	---	2,587.538	3,753.653	1,881.762	5,284.506	---	1,945.820	1,885.059	2,145.282	62,237.7	
	.0	193,958.0	141,373.0	421,535.0	26,174.0	.0	54,228.0	79,806.0	74,226.0	32	
2007:	---	<b>142,975.76</b>	<b>181,007.81</b>	<b>163,538.92</b>	<b>98,280.12</b>	---	<b>115,479.49</b>	<b>87,849.36</b>	<b>86,511.13</b>	<b>61,687</b>	
2007	---	2,652.452	3,698.804	2,047.795	4,839.595	---	2,027.457	1,785.573	2,075.720	23,362.2	
	.0	197,251.0	159,467.0	426,828.0	28,391.0	.0	59,183.0	81,338.0	82,457.0	1,02	
2008:	---	<b>149,687.47</b>	<b>190,878.79</b>	<b>172,908.58</b>	<b>111,680.33</b>	---	<b>114,132.38</b>	<b>90,602.60</b>	<b>86,358.04</b>	<b>13,236</b>	
2008	---	2,960.789	4,001.816	2,089.963	6,030.673	---	2,070.049	1,726.711	1,934.822	4,918.6	
	.0	191,614.0	144,367.0	471,305.0	28,983.0	.0	52,447.0	88,125.0	87,896.0	36	
2009:	---	<b>139,205.31</b>	<b>179,389.38</b>	<b>175,612.03</b>	<b>103,384.46</b>	---	<b>117,609.82</b>	<b>92,505.15</b>	<b>92,736.52</b>	<b>21,950</b>	
2009	---	2,728.466	3,800.255	2,041.479	4,981.880	---	2,542.377	1,902.344	2,136.781	4,415.2	
	.0	179,507.0	149,959.0	472,176.0	32,149.0	.0	59,296.0	84,216.0	94,028.0	29	
2010:	---	<b>131,725.12</b>	<b>178,201.30</b>	<b>171,489.87</b>	<b>109,007.92</b>	---	<b>117,972.82</b>	<b>91,411.63</b>	<b>92,189.25</b>	<b>15,351</b>	
2010	---	2,525.545	3,428.888	1,951.247	5,042.254	---	2,128.980	1,675.318	2,081.979	4,720.3	
	.0	183,327.0	145,764.0	450,730.0	27,652.0	.0	59,961.0	93,426.0	84,378.0	18	
2011:	---	<b>132,081.26</b>	<b>173,711.92</b>	<b>171,059.05</b>	<b>114,569.52</b>	---	<b>123,462.91</b>	<b>98,510.51</b>	<b>89,891.96</b>	<b>95,105</b>	
2011	---	2,708.996	3,531.156	1,940.274	5,155.359	---	2,265.543	2,094.794	1,662.860	27,080.9	
	.0	174,957.0	154,286.0	468,363.0	31,497.0	.0	68,009.0	90,880.0	80,609.0	31	
2012:	---	<b>139,798.25</b>	<b>179,255.76</b>	<b>170,521.24</b>	<b>92,766.61</b>	---	<b>120,162.35</b>	<b>93,633.91</b>	<b>99,189.86</b>	<b>125,342</b>	
2012	---	2,829.179	3,568.817	1,937.096	4,129.772	---	2,038.392	1,902.306	2,372.886	90,956.1	
	.0	188,230.0	158,267.0	467,528.0	35,166.0	.0	65,920.0	84,249.0	81,355.0	69	
2013:	---	<b>141,063.66</b>	<b>190,435.47</b>	<b>181,952.46</b>	<b>101,980.95</b>	---	<b>123,438.35</b>	<b>95,248.61</b>	<b>96,592.14</b>	<b>20,879</b>	
2013	---	2,977.134	3,955.336	2,120.938	4,143.413	---	2,222.644	1,894.757	2,386.332	7,778.3	
	.0	174,705.0	154,996.0	494,462.0	34,972.0	.0	62,551.0	91,507.0	81,534.0	69	
2014:	---	<b>144,006.50</b>	<b>175,802.73</b>	<b>180,112.01</b>	<b>108,665.15</b>	---	<b>121,812.47</b>	<b>97,052.32</b>	<b>99,539.09</b>	<b>42,784</b>	
2014	---	3,117.596	3,656.435	2,067.748	4,632.733	---	2,321.941	1,940.925	2,118.652	9,164.7	
	.0	167,170.0	160,084.0	523,258.0	35,451.0	.0	62,172.0	90,309.0	75,024.0	50	
<b>COL TOTAL</b>		<b>2,995,349.47</b>	<b>118,640.96</b>	<b>168,156.09</b>	<b>193,105.51</b>	<b>96,000.63</b>	<b>2,658,852.22</b>	<b>104,140.89</b>	<b>83,689.63</b>	<b>82,777.46</b>	<b>197,370</b>
		92,380.698	609.974	962.560	2,683.388	1,321.872	179,457.981	633.086	516.817	561.227	129,259.0
		238,941.0	3,488,751.0	2,249,222.0	7,112,919.0	435,440.0	61,837.0	871,494.0	1,178,731.0	1,162,258.0	11,24

Color coding:	<-1.0	<-0.5	<0.0	>0.0	>0.5	>1.0	Z
Mean in each cell:	Smaller than average			Larger than average			

Chart for all valid cases

### Mean of Total personal income BY Census year BY Class of worker



#### Allocation of cases (unweighted)

Valid cases	154,035
Cases excluded by filters or weight	55,596,674
<b>Total cases</b>	<b>55,750,709</b>

#### Datasets

- 1 /share/htdocs/all\_usa\_samples
- 2 /sda\_support/newvars/all\_usa\_samples