

**SDA 3.5: Means**

United States 1850-2014

Jul 21, 2016 (Thu 09:46 PM CDT)

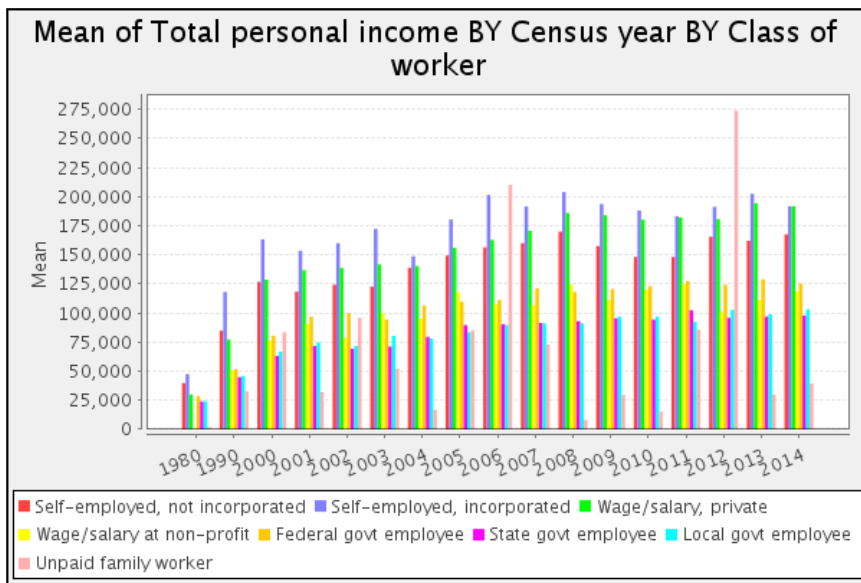
Variables					
Role	Name	Label	Range	MD	Dataset
Dependent	<b>inctot</b>	Total personal income	-20000-9999999		1
Row	<b>year</b>	Census year	1850-2014		1
Column	<b>classwkrd</b>	Class of worker	0-29		1
Control	<b>race</b>	Race	1-9		1
Weight	<b>perwt</b>	Person weight	.00-4,044.00		1
Filter	<b>uhrswork(35-99)</b>	Usual hours worked per week	0-99		1
Filter	<b>empstat(1)</b>	Employment status(=Employed)	0-3		1
Filter	<b>occ1990(178)</b>	Occupation, 1990 basis(=Lawyers)	3-999		1

Statistics for race = 1(White)										
Cells contain: -Means -SRS Std Errs -Weighted N		classwkrd								ROW TOTAL
		13 Self-employed, not incorporated	14 Self-employed, incorporated	22 Wage/salary, private	23 Wage/salary at non-profit	25 Federal govt employee	27 State govt employee	28 Local govt employee	29 Unpaid family worker	
year	1980: 1980	<b>39,867.92</b> 561.766 174,200.0	<b>47,487.25</b> 1,185.830 34,500.0	<b>30,000.11</b> 510.894 147,200.0	--- --- .0	<b>28,673.50</b> 874.247 25,300.0	<b>23,960.39</b> 868.169 21,700.0	<b>24,128.57</b> 825.983 23,700.0	<b>2,005.00</b> --- 100.0	<b>34,724.03</b> 332.181 426,700.0
	1990: 1990	<b>84,894.44</b> 1,265.251 180,693.0	<b>118,163.35</b> 2,665.665 71,811.0	<b>77,235.17</b> 1,149.949 268,901.0	<b>50,588.87</b> 2,856.057 15,340.0	<b>51,789.30</b> 1,815.565 25,423.0	<b>44,856.50</b> 1,252.695 31,290.0	<b>45,934.15</b> 1,287.495 32,143.0	<b>32,852.00</b> --- 105.0	<b>79,222.54</b> 741.145 625,706.0
	2000: 2000	<b>126,866.75</b> 2,429.165 186,650.0	<b>163,320.74</b> 3,994.510 101,394.0	<b>128,694.46</b> 2,051.213 302,445.0	<b>76,499.91</b> 4,670.607 17,727.0	<b>80,498.86</b> 2,432.996 30,014.0	<b>63,223.90</b> 1,818.356 40,709.0	<b>66,793.01</b> 2,034.444 37,019.0	<b>83,531.53</b> 47,791.556 333.0	<b>122,867.43</b> 1,275.496 716,291.0
	2001: 2001	<b>118,362.75</b> 2,542.262 171,945.0	<b>153,565.14</b> 5,218.705 102,752.0	<b>136,772.67</b> 2,935.329 314,027.0	<b>90,591.32</b> 7,642.119 19,774.0	<b>96,834.00</b> 3,082.427 24,570.0	<b>71,707.02</b> 3,528.309 38,434.0	<b>74,758.46</b> 2,429.284 45,221.0	<b>32,162.53</b> 7,998.349 443.0	<b>124,661.20</b> 1,681.778 717,166.0
	2002: 2002	<b>124,320.36</b> 2,869.845 169,966.0	<b>160,036.20</b> 5,770.966 108,346.0	<b>138,897.53</b> 3,236.992 296,317.0	<b>78,544.20</b> 5,207.852 15,961.0	<b>99,854.23</b> 3,892.877 37,503.0	<b>69,259.86</b> 3,495.165 41,478.0	<b>71,693.18</b> 3,032.908 39,246.0	<b>95,891.06</b> 14,512.024 716.0	<b>127,380.66</b> 1,835.774 709,533.0
	2003: 2003	<b>122,753.69</b> 2,675.755 156,937.0	<b>172,389.42</b> 5,516.977 110,436.0	<b>141,865.93</b> 2,703.936 334,006.0	<b>99,933.80</b> 9,076.374 16,689.0	<b>94,403.42</b> 2,858.777 30,292.0	<b>71,174.61</b> 2,318.145 37,183.0	<b>80,464.90</b> 2,760.650 46,116.0	<b>52,252.06</b> 44,454.612 607.0	<b>131,923.44</b> 1,675.508 732,266.0
	2004: 2004	<b>138,953.35</b> 3,564.493 172,044.0	<b>148,826.73</b> 3,676.456 125,581.0	<b>140,393.49</b> 2,080.970 345,903.0	<b>95,269.92</b> 7,685.959 16,521.0	<b>106,483.04</b> 4,284.808 33,983.0	<b>79,560.29</b> 3,587.497 45,959.0	<b>77,975.88</b> 3,396.837 41,350.0	<b>16,917.65</b> 12,175.246 340.0	<b>132,071.22</b> 1,436.404 781,681.0
	2005: 2005	<b>149,408.97</b> 2,894.027 148,280.0	<b>180,398.58</b> 3,672.292 121,804.0	<b>156,155.10</b> 2,066.636 352,374.0	<b>117,820.93</b> 8,258.940 17,792.0	<b>109,706.62</b> 2,795.048 46,124.0	<b>89,596.46</b> 1,820.850 68,076.0	<b>83,546.94</b> 2,308.394 59,320.0	<b>85,068.85</b> 23,077.628 183.0	<b>144,209.73</b> 1,254.495 813,953.0
	2006: 2006	<b>156,451.70</b> 3,018.604 145,894.0	<b>201,402.75</b> 4,078.299 122,539.0	<b>162,838.15</b> 2,078.499 358,064.0	<b>107,640.27</b> 6,521.946 19,123.0	<b>111,253.78</b> 2,172.643 44,651.0	<b>90,449.98</b> 2,164.766 63,995.0	<b>89,693.49</b> 2,559.437 55,571.0	<b>210,232.19</b> 58,760.449 233.0	<b>152,652.51</b> 1,318.355 810,070.0
	2007: 2007	<b>160,029.64</b> 3,170.201 147,564.0	<b>191,630.31</b> 4,041.634 137,993.0	<b>170,684.56</b> 2,236.831 366,758.0	<b>106,874.32</b> 5,928.934 21,628.0	<b>121,325.81</b> 2,210.524 47,837.0	<b>91,474.83</b> 1,979.338 66,042.0	<b>91,075.82</b> 2,449.835 63,078.0	<b>73,002.45</b> 33,993.200 612.0	<b>155,728.00</b> 1,363.748 851,512.0
	2008: 2008	<b>169,990.10</b> 3,444.817 141,176.0	<b>203,935.05</b> 4,406.410 123,647.0	<b>185,973.85</b> 2,325.500 394,235.0	<b>124,494.92</b> 7,524.124 21,825.0	<b>118,010.57</b> 2,321.202 41,346.0	<b>93,028.20</b> 1,918.662 70,731.0	<b>91,154.09</b> 2,163.747 69,063.0	<b>8,000.00</b> --- 76.0	<b>165,879.10</b> 1,449.029 862,099.0
	2009: 2009	<b>157,529.85</b> 3,265.264	<b>193,641.26</b> 4,255.117	<b>184,051.75</b> 2,239.364	<b>111,052.93</b> 5,844.404	<b>120,594.04</b> 2,880.413	<b>95,454.10</b> 2,200.737	<b>96,988.46</b> 2,548.374	<b>29,700.00</b> ---	<b>161,487.00</b> 1,387.589

	129,800.0	123,850.0	396,040.0	24,370.0	47,964.0	67,332.0	73,713.0	108.0	863,177.0
2010: 2010	<b>148,150.19</b> 3,036.582 132,174.0	<b>188,058.93</b> 3,648.097 121,258.0	<b>180,247.15</b> 2,159.012 377,126.0	<b>120,254.74</b> 6,099.237 21,131.0	<b>123,121.76</b> 2,411.229 45,491.0	<b>94,371.60</b> 1,835.322 75,947.0	<b>96,960.52</b> 2,412.804 62,537.0	<b>15,351.35</b> 4,720.377 185.0	<b>157,608.46</b> 1,293.577 835,849.0
2011: 2011	<b>148,157.94</b> 3,277.634 126,792.0	<b>183,231.74</b> 3,865.788 129,598.0	<b>182,098.82</b> 2,148.920 388,298.0	<b>124,847.35</b> 6,246.800 24,527.0	<b>127,506.61</b> 2,622.642 53,292.0	<b>102,362.33</b> 2,302.734 73,683.0	<b>92,437.92</b> 1,799.590 63,083.0	<b>85,719.70</b> 42,377.866 132.0	<b>158,810.42</b> 1,315.706 859,405.0
2012: 2012	<b>165,533.12</b> 3,479.338 132,474.0	<b>191,291.41</b> 3,874.358 132,500.0	<b>180,768.23</b> 2,133.267 384,701.0	<b>100,788.70</b> 4,811.887 27,754.0	<b>124,339.47</b> 2,325.482 51,702.0	<b>96,009.39</b> 1,989.939 68,360.0	<b>102,801.88</b> 2,667.914 63,391.0	<b>273,916.20</b> 204,420.053 284.0	<b>161,641.61</b> 1,331.451 861,166.0
2013: 2013	<b>162,108.16</b> 3,653.197 121,173.0	<b>202,452.96</b> 4,417.536 128,426.0	<b>194,359.31</b> 2,349.174 407,253.0	<b>111,405.71</b> 5,036.895 27,357.0	<b>129,083.00</b> 2,580.461 47,081.0	<b>97,001.84</b> 2,154.980 74,917.0	<b>98,871.13</b> 2,621.069 62,475.0	<b>30,102.00</b> 2,689.725 469.0	<b>169,567.81</b> 1,462.140 869,151.0
2014: 2014	<b>167,540.89</b> 3,956.797 114,871.0	<b>191,801.73</b> 4,151.667 129,769.0	<b>191,797.70</b> 2,327.447 425,520.0	<b>118,810.89</b> 5,529.327 27,632.0	<b>125,303.62</b> 2,632.722 48,813.0	<b>97,792.22</b> 2,118.411 72,288.0	<b>103,252.08</b> 2,520.845 55,084.0	<b>39,492.64</b> 13,837.930 367.0	<b>169,178.18</b> 1,470.310 874,344.0
<b>COL TOTAL</b>	<b>134,309.14</b> 731.584 2,552,633.0	<b>177,868.54</b> 1,050.671 1,926,204.0	<b>159,629.54</b> 574.386 5,859,168.0	<b>104,549.11</b> 1,594.760 335,151.0	<b>109,444.45</b> 711.508 681,386.0	<b>86,600.60</b> 573.181 958,124.0	<b>86,375.33</b> 639.704 892,110.0	<b>72,821.58</b> 16,464.416 5,293.0	<b>143,131.64</b> 347.451 13,210,069.0

<b>Color coding:</b>	<-1.0	<-0.5	<0.0	>0.0	>0.5	>1.0	Z
<b>Mean in each cell:</b>	Smaller than average			Larger than average			

**Chart for race = 1(White)**



**Statistics for race = 2(Black/Negro)**

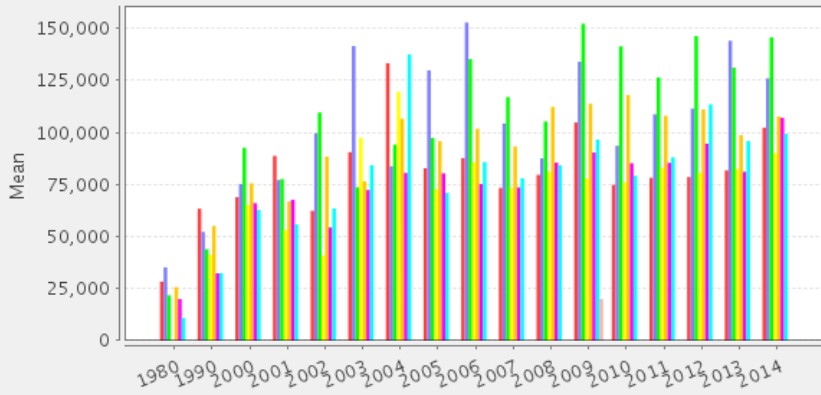
Cells contain: -Means -SRS Std Errs -Weighted N		classwkrd								ROW TOTAL
		13 Self- employed, not incorporated	14 Self- employed, incorporated	22 Wage/salary, private	23 Wage/salary at non-profit	25 Federal govt employee	27 State govt employee	28 Local govt employee	29 Unpaid family worker	
1980: 1980	<b>28,369.04</b> 3,286.774 2,600.0	<b>35,203.75</b> 17,006.234 400.0	<b>21,785.54</b> 3,007.177 2,800.0	---	<b>25,713.70</b> 2,332.179 2,300.0	<b>19,974.44</b> 2,645.748 1,800.0	<b>10,892.27</b> 1,655.054 1,100.0	---	<b>23,265.23</b> 1,468.319 11,000.0	
1990: 1990	<b>63,365.06</b> 12,592.102 3,592.0	<b>52,254.22</b> 10,450.926 997.0	<b>43,883.76</b> 4,064.889 6,344.0	<b>41,193.85</b> 5,751.656 2,330.0	<b>55,051.19</b> 4,631.405 2,468.0	<b>32,378.47</b> 3,801.736 1,621.0	<b>32,459.66</b> 2,016.479 2,648.0	---	<b>46,419.50</b> 2,904.325 20,000.0	
2000: 2000	<b>68,915.55</b> 8,653.602 7,118.0	<b>75,240.86</b> 12,366.367 2,074.0	<b>92,650.23</b> 9,842.513 9,984.0	<b>65,134.25</b> 10,314.075 1,420.0	<b>75,543.53</b> 5,996.063 3,241.0	<b>66,004.36</b> 6,178.082 2,691.0	<b>62,822.97</b> 4,350.657 4,758.0	---	<b>76,247.11</b> 3,976.826 31,286.0	
2001: 2001	<b>88,727.37</b> 12,657.552	<b>77,129.77</b> 12,622.231	<b>77,590.21</b> 7,979.785	<b>53,231.88</b> 10,052.355	<b>66,856.05</b> 9,729.822	<b>67,666.58</b> 6,816.396	<b>55,863.20</b> 9,062.593	---	<b>73,610.33</b> 4,197.536	

	3,526.0	2,875.0	12,779.0	1,007.0	2,039.0	2,553.0	3,652.0	.0	28,431.0
2002: 2002	<b>62,373.50</b> 14,406.192 3,751.0	<b>99,608.19</b> 34,757.430 3,234.0	<b>109,558.35</b> 13,514.834 9,117.0	<b>40,938.39</b> 2,461.263 422.0	<b>88,316.65</b> 5,960.101 2,370.0	<b>54,369.28</b> 11,290.300 2,269.0	<b>63,490.46</b> 14,000.669 3,600.0	---	<b>86,154.96</b> 7,291.721 24,763.0
2003: 2003	<b>90,522.10</b> 20,040.909 5,942.0	<b>141,503.01</b> 50,026.152 2,103.0	<b>73,649.55</b> 8,453.987 16,005.0	<b>97,446.86</b> 12,084.264 1,929.0	<b>76,504.88</b> 9,569.126 3,340.0	<b>72,321.85</b> 5,546.366 1,960.0	<b>84,279.81</b> 8,561.160 4,850.0	---	<b>83,263.68</b> 6,217.619 36,129.0
2004: 2004	<b>133,243.74</b> 23,465.122 3,834.0	<b>83,725.39</b> 10,581.558 4,716.0	<b>94,169.87</b> 10,199.865 12,499.0	<b>119,559.34</b> 30,634.423 1,506.0	<b>106,607.81</b> 12,318.432 4,522.0	<b>80,534.18</b> 9,417.017 2,493.0	<b>137,520.24</b> 21,394.207 3,856.0	---	<b>103,988.55</b> 5,966.536 33,426.0
2005: 2005	<b>82,845.23</b> 14,547.836 4,266.0	<b>129,815.85</b> 22,927.560 3,596.0	<b>97,343.65</b> 8,384.918 14,569.0	<b>72,600.14</b> 6,756.142 1,960.0	<b>95,795.24</b> 5,142.297 5,358.0	<b>80,351.28</b> 5,462.785 5,661.0	<b>70,982.75</b> 6,155.705 5,130.0	---	<b>91,588.86</b> 4,231.582 40,540.0
2006: 2006	<b>87,709.84</b> 12,086.479 5,742.0	<b>152,803.60</b> 25,731.528 3,114.0	<b>135,236.80</b> 11,031.658 11,732.0	<b>85,527.25</b> 13,711.097 1,219.0	<b>101,779.23</b> 6,549.352 3,501.0	<b>75,244.53</b> 5,571.635 4,787.0	<b>85,797.72</b> 5,345.018 5,849.0	---	<b>108,186.95</b> 4,962.098 35,944.0
2007: 2007	<b>73,405.21</b> 10,895.131 4,713.0	<b>104,278.43</b> 10,439.313 5,652.0	<b>116,994.55</b> 9,612.669 14,802.0	<b>73,467.12</b> 9,553.459 1,887.0	<b>93,226.33</b> 5,951.176 5,763.0	<b>73,562.87</b> 4,536.042 5,383.0	<b>78,034.54</b> 5,875.299 5,951.0	---	<b>95,204.23</b> 3,883.860 44,151.0
2008: 2008	<b>79,632.20</b> 14,265.225 5,168.0	<b>87,589.96</b> 18,844.101 4,668.0	<b>105,283.45</b> 6,786.148 18,978.0	<b>81,175.58</b> 6,761.305 1,810.0	<b>112,270.52</b> 6,249.601 5,590.0	<b>85,482.17</b> 5,618.635 7,624.0	<b>84,230.89</b> 6,105.879 5,308.0	---	<b>95,466.82</b> 3,656.256 49,146.0
2009: 2009	<b>104,801.53</b> 17,086.469 5,415.0	<b>133,972.11</b> 19,993.011 5,267.0	<b>152,222.09</b> 10,538.299 17,035.0	<b>77,870.62</b> 22,775.673 1,975.0	<b>113,730.47</b> 9,726.913 4,376.0	<b>90,359.05</b> 5,081.374 7,854.0	<b>96,543.36</b> 5,371.462 6,630.0	20,000.00 ---	<b>120,656.52</b> 5,006.799 48,645.0
2010: 2010	<b>74,826.69</b> 10,632.913 3,515.0	<b>93,640.54</b> 13,078.293 3,347.0	<b>141,348.13</b> 9,661.021 16,026.0	<b>76,018.98</b> 7,447.708 2,133.0	<b>117,924.94</b> 5,941.642 5,984.0	<b>85,179.58</b> 6,429.042 7,474.0	<b>79,215.55</b> 5,990.513 7,059.0	---	<b>107,718.87</b> 4,164.733 45,538.0
2011: 2011	<b>78,230.27</b> 14,387.792 4,297.0	<b>108,727.23</b> 12,521.123 5,934.0	<b>126,410.21</b> 7,592.620 19,444.0	<b>82,997.12</b> 11,163.457 1,528.0	<b>108,027.71</b> 6,188.090 5,875.0	<b>85,396.57</b> 5,412.935 7,866.0	<b>88,063.57</b> 7,992.827 6,280.0	---	<b>105,917.42</b> 3,726.544 51,224.0
2012: 2012	<b>78,562.00</b> 9,100.138 5,800.0	<b>111,475.56</b> 14,732.947 5,558.0	<b>146,272.45</b> 8,695.397 18,489.0	<b>80,551.52</b> 21,100.826 1,777.0	<b>111,055.95</b> 5,447.130 7,156.0	<b>94,601.01</b> 10,299.286 6,375.0	<b>113,508.43</b> 10,336.409 5,741.0	---	<b>117,342.46</b> 4,256.710 50,896.0
2013: 2013	<b>81,779.85</b> 18,418.926 4,368.0	<b>144,042.08</b> 17,365.919 5,379.0	<b>131,070.76</b> 9,739.651 16,556.0	<b>82,532.72</b> 9,221.382 1,884.0	<b>98,702.09</b> 5,338.935 5,658.0	<b>81,125.28</b> 4,451.677 7,581.0	<b>95,856.26</b> 11,848.811 5,912.0	---	<b>109,799.43</b> 4,714.517 47,338.0
2014: 2014	<b>102,272.48</b> 18,085.169 2,284.0	<b>125,968.75</b> 14,197.918 7,651.0	<b>145,674.91</b> 9,237.601 21,218.0	<b>90,055.41</b> 15,858.858 2,209.0	<b>107,658.47</b> 7,385.604 6,047.0	<b>107,009.57</b> 8,539.551 7,407.0	<b>99,336.61</b> 6,658.715 7,942.0	---	<b>122,718.17</b> 4,547.332 54,758.0
<b>COL TOTAL</b>	<b>81,852.52</b> 3,426.711 75,931.0	<b>111,497.68</b> 4,673.162 66,565.0	<b>115,895.56</b> 2,443.925 238,377.0	<b>77,782.82</b> 3,551.296 26,996.0	<b>97,895.57</b> 1,864.408 75,588.0	<b>81,490.42</b> 1,823.843 83,399.0	<b>84,685.77</b> 2,128.566 86,266.0	20,000.00 ---	<b>99,304.15</b> 1,167.800 653,215.0

Color coding:	<-1.0	<-0.5	<0.0	>0.0	>0.5	>1.0	Z
Mean in each cell:	Smaller than average			Larger than average			

Chart for race = 2(Black/Negro)

### Mean of Total personal income BY Census year BY Class of worker



■ Self-employed, not incorporated 
 ■ Self-employed, incorporated 
 ■ Wage/salary, private  
■ Wage/salary at non-profit 
 ■ Federal gov employee 
 ■ State gov employee 
 ■ Local gov employee  
■ Unpaid family worker

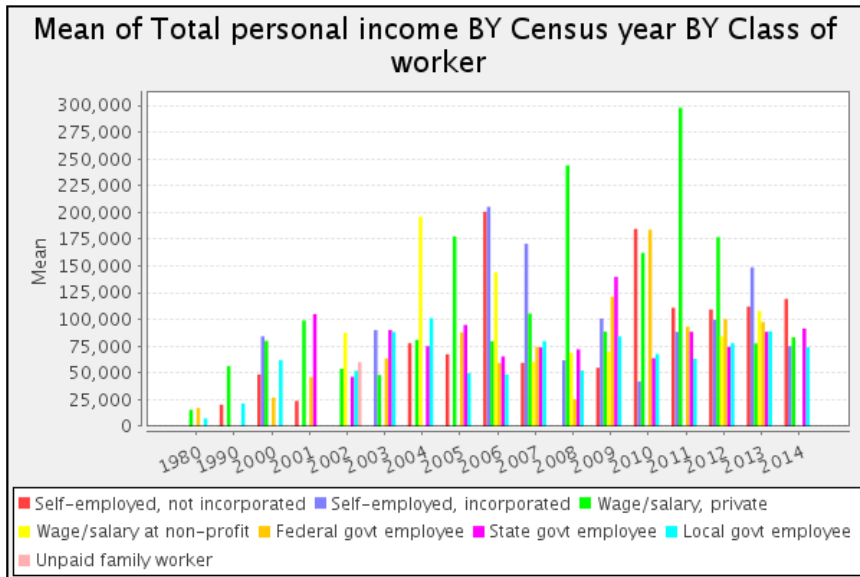
### Statistics for race = 3(American Indian or Alaska Native)

Cells contain: -Means -SRS Std Errs -Weighted N		classwkrd								ROW TOTAL
		13 Self- employed, not incorporated	14 Self- employed, incorporated	22 Wage/salary, private	23 Wage/salary at non-profit	25 Federal govt employee	27 State govt employee	28 Local govt employee	29 Unpaid family worker	
year	1980: 1980	---	---	<b>15,505.00</b>	---	<b>17,171.67</b>	---	<b>7,505.00</b>	---	<b>14,905.00</b>
		---	---	---	---	5,166.667	---	---	---	3,396.322
		.0	.0	100.0	.0	300.0	.0	100.0	.0	500.0
	1990: 1990	<b>20,275.82</b>	---	<b>56,285.71</b>	---	---	---	<b>21,373.69</b>	---	<b>36,227.10</b>
		5,595.711	---	3,906.213	---	---	---	13,027.797	---	7,262.957
		194.0	.0	546.0	.0	.0	.0	529.0	.0	1,269.0
	2000: 2000	<b>48,529.55</b>	<b>84,200.00</b>	<b>79,970.74</b>	---	<b>27,000.00</b>	---	<b>62,000.00</b>	---	<b>69,324.34</b>
		10,839.913	67,443.310	17,957.839	---	---	---	---	---	12,415.065
		220.0	252.0	622.0	.0	116.0	.0	121.0	.0	1,331.0
	2001: 2001	<b>23,800.00</b>	---	<b>99,015.42</b>	---	<b>46,181.08</b>	<b>105,000.00</b>	---	---	<b>65,381.87</b>
		---	---	25,686.375	---	7,342.613	---	---	---	15,111.017
		207.0	.0	389.0	.0	555.0	156.0	.0	.0	1,307.0
2002: 2002	---	---	<b>53,750.22</b>	<b>87,400.00</b>	---	<b>46,356.45</b>	<b>52,000.00</b>	<b>60,000.00</b>	<b>53,987.84</b>	
	---	---	18,294.499	---	---	11,091.214	---	---	6,633.096	
	.0	.0	2,274.0	224.0	.0	923.0	594.0	213.0	4,228.0	
2003: 2003	---	<b>90,000.00</b>	<b>48,000.00</b>	---	<b>63,600.00</b>	<b>90,010.00</b>	<b>88,194.70</b>	---	<b>74,266.28</b>	
	---	---	---	---	---	---	22,839.472	---	11,604.925	
	.0	65.0	235.0	.0	127.0	46.0	415.0	.0	888.0	
2004: 2004	<b>77,700.00</b>	---	<b>80,835.57</b>	<b>196,000.00</b>	---	<b>75,000.00</b>	<b>101,300.00</b>	---	<b>93,464.96</b>	
	31,744.606	---	6,881.907	---	---	---	41,952.473	---	16,526.759	
	640.0	.0	298.0	150.0	.0	210.0	300.0	.0	1,598.0	
2005: 2005	<b>67,446.81</b>	---	<b>177,555.28</b>	---	<b>87,820.47</b>	<b>94,834.34</b>	<b>49,910.54</b>	---	<b>86,271.69</b>	
	11,297.348	---	68,992.090	---	26,132.127	14,671.757	7,012.986	---	14,291.287	
	423.0	.0	322.0	.0	386.0	332.0	684.0	.0	2,147.0	
2006: 2006	<b>200,698.64</b>	<b>205,243.24</b>	<b>79,493.56</b>	<b>144,100.00</b>	<b>59,284.21</b>	<b>65,312.27</b>	<b>48,506.01</b>	---	<b>90,567.00</b>	
	71,325.957	159,604.478	23,316.959	---	958.762	3,898.723	8,298.267	---	14,298.139	
	294.0	185.0	885.0	239.0	285.0	502.0	832.0	.0	3,222.0	
2007: 2007	<b>59,456.67</b>	<b>170,675.68</b>	<b>105,488.05</b>	<b>60,400.00</b>	<b>74,500.00</b>	<b>73,793.10</b>	<b>79,714.25</b>	---	<b>85,618.67</b>	
	11,002.830	48,184.782	43,041.183	---	28,853.076	26,500.735	7,883.889	---	12,276.447	
	285.0	74.0	636.0	65.0	119.0	261.0	919.0	.0	2,359.0	
2008: 2008	---	<b>61,791.49</b>	<b>243,927.46</b>	<b>68,719.15</b>	<b>25,650.76</b>	<b>71,981.02</b>	<b>52,254.55</b>	---	<b>84,268.77</b>	
	---	6,067.101	61,296.041	13,169.730	21,316.068	21,069.302	13,350.968	---	18,794.317	
	.0	235.0	386.0	470.0	394.0	449.0	638.0	.0	2,572.0	
2009: 2009	<b>54,774.29</b>	<b>100,816.33</b>	<b>88,580.00</b>	<b>70,000.00</b>	<b>121,174.19</b>	<b>139,709.08</b>	<b>84,184.34</b>	---	<b>88,209.54</b>	
	29,919.842	14,661.955	29,815.331	---	11,105.563	109,109.304	9,492.422	---	10,720.377	
	350.0	294.0	750.0	279.0	310.0	98.0	613.0	.0	2,694.0	

2010: 2010	184,647.55 93,297.719 143.0	41,968.60 15,648.822 414.0	162,185.48 79,506.789 248.0	---	183,825.69 56,138.044 288.0	63,723.86 13,645.554 394.0	67,692.28 11,617.856 544.0	---	97,919.84 16,921.929 2,031.0
2011: 2011	110,889.50 50,431.383 733.0	88,358.42 14,353.209 279.0	297,912.34 74,486.285 308.0	---	93,230.84 7,488.723 502.0	88,438.50 13,929.454 226.0	63,178.02 9,582.659 455.0	---	117,149.81 19,029.714 2,503.0
2012: 2012	109,264.68 90,123.095 201.0	99,725.81 20,666.842 124.0	176,871.30 43,885.222 981.0	84,178.77 21,572.313 179.0	100,303.41 20,037.184 352.0	74,329.02 12,540.147 579.0	77,780.12 9,821.061 332.0	---	119,022.29 17,430.804 2,748.0
2013: 2013	111,957.49 71,317.002 494.0	148,607.93 99,519.817 454.0	77,505.49 26,963.994 455.0	108,000.00 ---	97,544.94 11,351.264 781.0	88,402.82 10,033.128 588.0	88,895.13 16,902.646 616.0	---	100,851.49 14,416.167 3,489.0
2014: 2014	119,138.26 28,514.331 190.0	75,000.00 ---	83,257.26 22,027.805 668.0	---	---	91,519.77 20,980.751 221.0	74,122.07 8,212.250 426.0	---	85,683.45 9,856.882 1,608.0
<b>COL TOTAL</b>	91,565.67 13,556.854 4,374.0	101,418.07 19,938.849 2,479.0	101,921.70 10,855.069 10,103.0	96,747.22 12,759.017 1,707.0	79,857.12 8,415.640 4,515.0	74,009.57 4,868.651 4,985.0	65,023.85 3,610.386 8,118.0	60,000.00 ---	85,409.17 3,960.928 36,494.0

Color coding:	<-1.0	<-0.5	<0.0	>0.0	>0.5	>1.0	Z
Mean in each cell:	Smaller than average			Larger than average			

Chart for race = 3(American Indian or Alaska Native)



Statistics for race = 4(Chinese)									
classwkrd									
Cells contain: -Means -SRS Std Errs -Weighted N	13 Self- employed, not incorporated	14 Self- employed, incorporated	22 Wage/salary, private	23 Wage/salary at non-profit	25 Federal govt employee	27 State govt employee	28 Local govt employee	29 Unpaid family worker	ROW TOTAL
1980: 1980	60,455.00 14,151.113 400.0	35,007.50 25,002.500 200.0	20,050.00 10,375.951 300.0	---	4,230.00 ---	---	25,005.00 .000 200.0	---	35,518.75 8,120.755 1,200.0
1990: 1990	98,480.60 40,451.199 720.0	65,099.44 35,688.142 252.0	64,542.83 9,364.711 1,395.0	---	34,000.00 ---	56,845.33 2,178.363 315.0	33,381.23 8,620.142 215.0	---	68,783.66 10,980.282 2,988.0
2000: 2000	72,663.56 27,068.783 955.0	171,178.98 60,916.451 433.0	105,919.44 15,624.950 3,445.0	41,383.93 3,187.091 224.0	60,262.22 31,986.745 270.0	59,780.94 14,355.573 745.0	65,084.33 7,281.729 691.0	---	92,186.53 10,236.523 6,763.0
2001: 2001	57,926.07 20,577.278 1,542.0	209,245.28 103,853.902 583.0	180,493.08 47,389.472 3,140.0	112,492.12 42,030.869 746.0	76,092.77 11,680.832 318.0	---	55,661.49 7,300.249 644.0	---	132,227.58 24,990.362 6,973.0

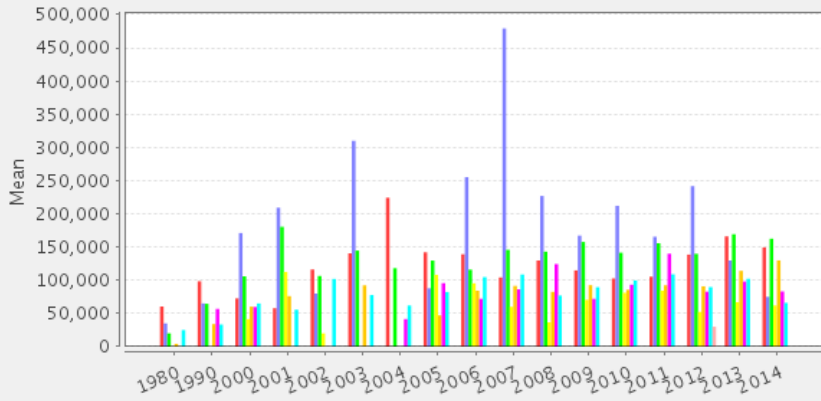


year	2002: 2002	<b>116,259.30</b> 39,535.250 1,022.0	<b>80,000.00</b> --- 933.0	<b>106,495.81</b> 21,248.259 6,037.0	<b>20,000.00</b> --- 410.0	---	---	<b>102,000.00</b> ---	---	<b>100,558.13</b> 16,250.962 8,622.0
	2003: 2003	<b>140,571.80</b> 28,816.474 1,218.0	<b>310,000.00</b> --- 205.0	<b>144,673.16</b> 18,931.898 7,150.0	---	<b>92,351.53</b> 7,725.780 652.0	---	<b>77,763.80</b> 14,401.603 326.0	---	<b>141,843.13</b> 14,190.137 9,551.0
	2004: 2004	<b>224,270.96</b> 99,719.016 737.0	---	<b>118,109.34</b> 23,275.202 3,478.0	---	---	<b>41,538.92</b> 14,303.542 334.0	<b>62,000.00</b> ---	---	<b>126,591.57</b> 21,774.462 4,767.0
	2005: 2005	<b>142,090.30</b> 46,642.822 837.0	<b>87,823.96</b> 21,729.980 480.0	<b>129,637.72</b> 14,418.067 5,269.0	<b>108,152.09</b> 61,431.581 335.0	<b>47,106.36</b> 31,649.207 214.0	<b>95,677.60</b> 13,772.182 743.0	<b>82,372.79</b> 18,119.209 904.0	---	<b>117,969.87</b> 10,469.761 8,782.0
	2006: 2006	<b>139,137.55</b> 31,859.820 269.0	<b>255,228.86</b> 66,103.239 492.0	<b>115,998.55</b> 11,437.175 3,921.0	<b>95,406.55</b> 14,383.126 702.0	<b>84,236.44</b> 11,502.808 1,035.0	<b>72,035.16</b> 16,280.015 640.0	<b>104,741.87</b> 10,187.473 834.0	---	<b>114,715.35</b> 8,720.850 7,893.0
	2007: 2007	<b>104,247.22</b> 35,561.642 709.0	<b>479,116.44</b> 29,455.681 146.0	<b>145,857.05</b> 13,728.454 4,889.0	<b>60,000.00</b> ---	<b>91,517.72</b> 11,453.859 508.0	<b>86,354.29</b> 12,166.935 700.0	<b>108,650.47</b> 20,500.599 632.0	---	<b>135,355.37</b> 11,070.338 7,664.0
	2008: 2008	<b>129,763.94</b> 53,045.818 1,162.0	<b>226,867.92</b> 52,110.591 943.0	<b>143,034.92</b> 13,679.515 5,834.0	<b>36,667.02</b> 15,348.553 188.0	<b>82,577.14</b> 11,733.313 318.0	<b>124,358.92</b> 26,598.412 930.0	<b>76,991.43</b> 9,380.693 1,541.0	---	<b>134,356.76</b> 10,466.451 10,916.0
	2009: 2009	<b>114,834.32</b> 32,169.562 1,140.0	<b>167,245.11</b> 33,897.189 2,021.0	<b>157,627.37</b> 12,944.126 6,950.0	<b>70,518.07</b> 26,944.128 581.0	<b>92,575.91</b> 10,650.894 938.0	<b>72,060.09</b> 11,229.038 426.0	<b>89,485.79</b> 11,005.699 901.0	---	<b>139,195.43</b> 9,354.508 12,957.0
	2010: 2010	<b>102,706.86</b> 30,063.427 669.0	<b>212,094.87</b> 49,403.797 1,033.0	<b>141,474.96</b> 12,008.214 6,014.0	<b>81,141.67</b> 6,530.519 192.0	<b>85,696.31</b> 14,567.444 610.0	<b>93,278.67</b> 7,704.047 716.0	<b>99,632.73</b> 19,639.353 605.0	---	<b>135,537.61</b> 9,278.799 9,839.0
	2011: 2011	<b>105,402.80</b> 38,206.576 1,430.0	<b>165,520.29</b> 69,737.862 1,400.0	<b>155,803.64</b> 14,781.033 8,066.0	<b>84,208.17</b> 14,177.788 465.0	<b>92,458.07</b> 9,914.859 703.0	<b>139,957.37</b> 58,707.992 835.0	<b>108,976.65</b> 21,747.717 364.0	---	<b>143,244.61</b> 11,939.794 13,263.0
	2012: 2012	<b>138,587.77</b> 32,703.603 1,737.0	<b>241,700.58</b> 69,904.118 859.0	<b>139,811.21</b> 15,449.889 7,954.0	<b>52,483.33</b> 14,186.486 132.0	<b>90,912.77</b> 13,913.478 367.0	<b>82,865.91</b> 8,932.717 798.0	<b>89,708.78</b> 13,453.221 763.0	<b>30,000.00</b> ---	<b>136,957.81</b> 11,821.258 12,687.0
	2013: 2013	<b>166,088.47</b> 35,861.400 1,561.0	<b>129,759.50</b> 30,912.556 1,506.0	<b>169,319.83</b> 17,755.896 7,095.0	<b>67,037.79</b> 9,229.299 569.0	<b>114,161.75</b> 6,710.086 1,031.0	<b>98,164.78</b> 5,667.527 619.0	<b>102,248.60</b> 30,041.612 977.0	---	<b>147,665.23</b> 11,247.395 13,358.0
	2014: 2014	<b>149,476.82</b> 35,635.127 1,044.0	<b>75,003.05</b> 41,839.969 491.0	<b>162,564.57</b> 12,218.062 9,209.0	<b>62,046.90</b> 35,713.134 565.0	<b>129,889.28</b> 18,340.972 849.0	<b>83,160.29</b> 18,053.645 1,180.0	<b>65,987.95</b> 8,669.185 830.0	---	<b>140,328.14</b> 9,261.318 14,168.0
	<b>COL TOTAL</b>	<b>122,234.86</b> 9,391.710 17,152.0	<b>170,160.51</b> 15,557.089 11,977.0	<b>142,155.51</b> 4,096.980 90,146.0	<b>75,568.45</b> 7,559.128 5,189.0	<b>92,411.95</b> 4,154.506 8,004.0	<b>90,076.77</b> 6,979.792 8,981.0	<b>83,490.25</b> 4,461.713 10,865.0	<b>30,000.00</b> ---	<b>129,925.89</b> 2,992.731 152,391.0

Color coding:	<-1.0	<-0.5	<0.0	>0.0	>0.5	>1.0	Z
Mean in each cell:	Smaller than average			Larger than average			

Chart for race = 4(Chinese)

### Mean of Total personal income BY Census year BY Class of worker



■ Self-employed, not incorporated 
 ■ Self-employed, incorporated 
 ■ Wage/salary, private  
■ Wage/salary at non-profit 
 ■ Federal gov employee 
 ■ State gov employee 
 ■ Local gov employee  
■ Unpaid family worker

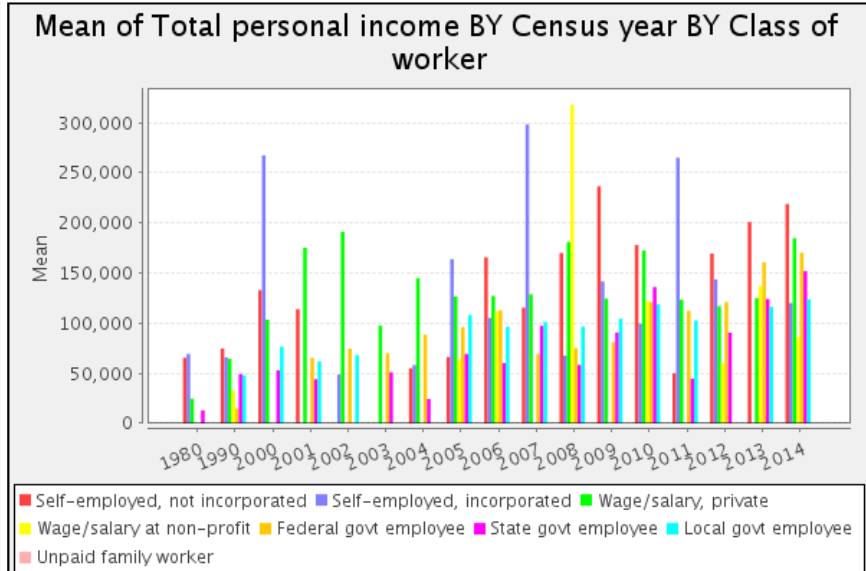
#### Statistics for race = 5(Japanese)

Cells contain: -Means -SRS Std Errs -Weighted N		classwkrd							ROW TOTAL
		13 Self- employed, not incorporated	14 Self- employed, incorporated	22 Wage/salary, private	23 Wage/salary at non-profit	25 Federal govt employee	27 State govt employee	28 Local govt employee	
year	1980: 1980	65,505.00 9,495.000 200.0	69,410.00 ---	24,698.33 4,996.037 300.0	---	---	13,005.00 ---	---	41,074.29 9,659.815 700.0
	1990: 1990	74,793.75 20,722.093 260.0	65,983.03 23,394.229 231.0	64,519.67 6,597.530 1,792.0	32,600.00 ---	15,000.00 ---	49,215.00 ---	47,920.16 7,956.021 342.0	59,778.04 5,169.844 2,924.0
	2000: 2000	132,970.19 45,339.337 618.0	267,459.54 67,726.569 346.0	103,538.53 22,611.917 1,343.0	---	---	53,000.00 ---	76,652.49 11,981.179 519.0	122,476.12 18,415.902 2,933.0
	2001: 2001	114,127.87 27,152.325 1,134.0	---	175,415.59 70,035.069 1,065.0	---	65,500.00 ---	44,056.54 6,351.065 283.0	61,929.77 8,967.182 346.0	119,725.68 24,628.295 3,041.0
	2002: 2002	---	48,700.00 ---	191,227.75 62,171.605 1,708.0	---	74,600.00 ---	---	68,280.55 1,509.111 401.0	154,730.51 41,031.050 2,422.0
	2003: 2003	---	---	97,534.61 17,279.827 1,017.0	---	70,000.00 ---	51,000.00 ---	---	92,797.18 14,655.088 1,170.0
	2004: 2004	55,000.00 ---	58,246.81 17,879.550 141.0	144,893.04 34,901.270 589.0	---	88,553.96 23,831.444 278.0	24,334.85 10,361.116 231.0	---	93,618.42 18,707.059 1,441.0
	2005: 2005	66,279.65 28,612.453 344.0	163,971.14 71,070.666 343.0	126,610.47 28,691.332 984.0	64,277.49 7,505.233 191.0	95,969.01 4,477.712 241.0	69,333.33 18,811.935 165.0	108,319.76 17,795.457 339.0	110,162.23 14,983.527 2,607.0
	2006: 2006	165,756.48 59,079.703 324.0	105,275.56 23,730.567 311.0	127,253.07 21,705.175 1,420.0	111,908.38 44,439.143 382.0	112,830.29 12,170.722 307.0	60,192.79 13,138.413 416.0	96,450.71 15,783.299 491.0	114,196.26 11,699.537 3,651.0
	2007: 2007	115,579.29 60,178.337 449.0	298,319.68 110,523.972 369.0	128,813.54 26,515.741 1,595.0	---	69,268.31 14,618.318 235.0	97,285.58 16,137.470 513.0	101,257.14 17,104.710 350.0	133,596.76 20,256.097 3,511.0
	2008: 2008	170,161.49 60,803.485 592.0	67,695.65 7,497.448 115.0	180,786.20 38,818.940 1,493.0	318,100.00 ---	75,000.00 ---	58,376.07 19,694.944 234.0	96,646.32 28,316.482 408.0	153,922.15 22,839.165 2,998.0
	2009: 2009	236,573.36 75,680.998 506.0	141,704.08 61,353.015 392.0	124,512.47 20,975.755 1,668.0	---	81,000.00 ---	90,619.46 20,021.603 370.0	104,523.60 15,293.477 722.0	133,421.80 16,554.647 3,732.0

2010: 2010	<b>178,030.88</b> 53,535.844 421.0	<b>99,526.97</b> 23,285.263 241.0	<b>172,553.47</b> 29,022.259 922.0	<b>122,333.33</b> 4,422.166 315.0	<b>121,019.49</b> 12,973.972 390.0	<b>136,002.61</b> 18,707.229 479.0	<b>118,899.95</b> 35,061.762 443.0	<b>143,750.18</b> 12,144.564 3,211.0
2011: 2011	<b>50,000.00</b> --- 63.0	<b>265,193.37</b> 118,196.349 181.0	<b>123,420.10</b> 19,479.274 1,935.0	---	<b>112,418.25</b> 11,077.184 274.0	<b>44,428.84</b> 20,845.100 912.0	<b>102,707.69</b> 32,574.859 182.0	<b>107,127.83</b> 15,192.676 3,547.0
2012: 2012	<b>169,473.95</b> 43,746.905 783.0	<b>143,752.43</b> 52,309.727 824.0	<b>116,960.35</b> 21,595.385 1,924.0	<b>60,000.00</b> ---	<b>121,113.89</b> 21,033.790 458.0	<b>90,475.27</b> 8,400.125 245.0	---	<b>129,813.33</b> 15,543.080 4,294.0
2013: 2013	<b>200,892.94</b> 43,616.071 637.0	---	<b>125,033.31</b> 23,433.621 1,591.0	<b>137,060.00</b> ---	<b>160,775.35</b> 75,138.564 159.0	<b>124,097.56</b> 36,825.481 246.0	<b>116,241.09</b> 20,265.513 404.0	<b>141,487.36</b> 15,590.264 3,094.0
2014: 2014	<b>218,947.60</b> 36,959.316 313.0	<b>120,000.00</b> ---	<b>184,819.56</b> 42,847.503 1,848.0	<b>86,216.81</b> 17,100.740 226.0	<b>170,400.00</b> ---	<b>151,921.35</b> 34,681.610 178.0	<b>123,823.13</b> 12,300.505 377.0	<b>170,185.41</b> 25,769.024 3,039.0
<b>COL TOTAL</b>	<b>147,735.11</b> 13,923.141 6,846.0	<b>156,668.62</b> 21,499.063 3,746.0	<b>134,164.48</b> 7,632.060 23,194.0	<b>107,593.13</b> 18,441.025 1,410.0	<b>98,694.56</b> 7,917.529 3,194.0	<b>76,106.87</b> 7,301.610 4,601.0	<b>94,741.39</b> 5,716.682 5,324.0	<b>124,838.95</b> 4,686.463 48,315.0

<b>Color coding:</b>	<-1.0	<-0.5	<0.0	>0.0	>0.5	>1.0	Z
<b>Mean in each cell:</b>	Smaller than average			Larger than average			

Chart for race = 5(Japanese)



Statistics for race = 6(Other Asian or Pacific Islander)

Statistics for race = 6(Other Asian or Pacific Islander)										
Cells contain: -Means -SRS Std Errs -Weighted N		classwkrd								ROW TOTAL
		13 Self- employed, not incorporated	14 Self- employed, incorporated	22 Wage/salary, private	23 Wage/salary at non-profit	25 Federal govt employee	27 State govt employee	28 Local govt employee	29 Unpaid family worker	
1980: 1980	<b>12,505.00</b> --- 100.0	---	<b>5,441.67</b> 2,807.254 300.0	---	<b>2,005.00</b> ---	---	---	---	---	<b>6,167.00</b> 2,306.023 500.0
1990: 1990	<b>76,005.47</b> 29,051.803 224.0	<b>50,000.00</b> ---	<b>63,035.33</b> 18,677.229 886.0	<b>9,000.00</b> ---	<b>56,180.23</b> 12,099.380 458.0	---	<b>48,705.86</b> 2,982.562 649.0	---	---	<b>54,315.88</b> 8,365.647 2,492.0
2000: 2000	<b>91,403.89</b> 24,820.097 1,156.0	<b>172,510.09</b> 46,172.025 971.0	<b>99,374.99</b> 10,951.954 5,498.0	<b>39,332.82</b> 4,350.651 355.0	<b>61,674.32</b> 9,618.003 952.0	<b>56,462.26</b> 8,414.435 424.0	<b>43,714.36</b> 6,908.927 1,460.0	---	---	<b>90,604.10</b> 8,046.333 10,816.0
2001: 2001	<b>104,835.09</b> 19,277.462 1,140.0	<b>189,705.88</b> 139,621.027 408.0	<b>131,149.92</b> 20,741.229 6,362.0	<b>64,576.39</b> 23,771.359 415.0	<b>92,744.44</b> 17,985.145 432.0	<b>69,793.91</b> 15,418.915 394.0	<b>76,780.07</b> 9,179.326 838.0	---	---	<b>119,130.35</b> 13,439.964 9,989.0

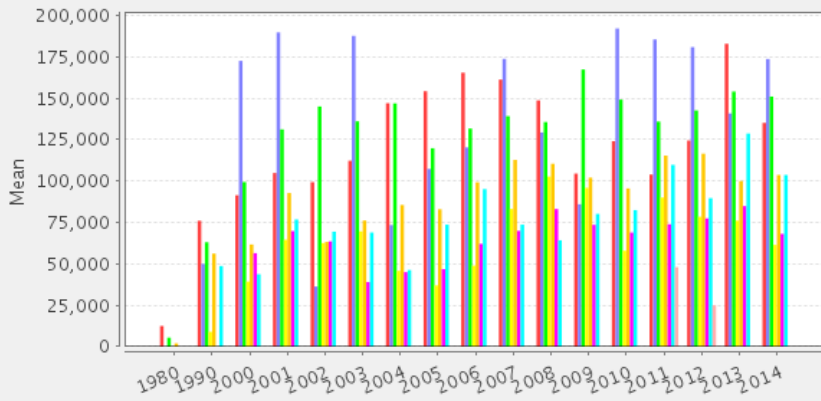


year	2002: 2002	<b>99,318.43</b> 23,896.809 2,746.0	<b>36,300.00</b> --- 469.0	<b>144,981.23</b> 23,303.519 8,171.0	<b>62,606.96</b> 13,290.187 658.0	<b>63,214.72</b> 10,975.415 1,114.0	<b>63,561.10</b> 9,352.019 2,396.0	<b>69,421.57</b> 13,359.111 779.0	---	<b>109,739.98</b> 12,872.458 16,333.0
	2003: 2003	<b>112,268.06</b> 47,203.278 720.0	<b>187,623.04</b> 89,372.747 599.0	<b>136,042.51</b> 22,630.310 9,101.0	<b>69,628.09</b> 30,269.434 929.0	<b>76,153.01</b> 21,163.273 724.0	<b>39,000.00</b> --- 240.0	<b>68,899.22</b> 7,097.957 1,918.0	---	<b>118,942.46</b> 15,345.274 14,231.0
	2004: 2004	<b>146,977.15</b> 68,433.029 1,138.0	<b>73,408.64</b> 13,079.940 1,021.0	<b>146,844.20</b> 25,443.146 9,908.0	<b>45,777.19</b> 8,189.286 377.0	<b>85,532.75</b> 8,012.346 1,267.0	<b>45,000.00</b> .000 295.0	<b>46,250.48</b> 5,168.868 1,046.0	---	<b>125,194.23</b> 17,862.420 15,052.0
	2005: 2005	<b>154,200.59</b> 24,754.029 3,209.0	<b>107,285.36</b> 21,089.846 1,463.0	<b>119,799.98</b> 8,578.976 9,234.0	<b>36,991.43</b> 5,985.825 467.0	<b>82,951.03</b> 6,380.423 1,951.0	<b>46,779.87</b> 10,658.133 611.0	<b>73,635.50</b> 7,746.625 1,169.0	---	<b>113,333.85</b> 6,559.201 18,104.0
	2006: 2006	<b>165,400.40</b> 90,829.141 497.0	<b>120,277.83</b> 29,687.257 1,033.0	<b>131,671.97</b> 9,137.488 11,898.0	<b>48,933.33</b> 15,292.191 252.0	<b>99,218.83</b> 7,028.410 1,210.0	<b>62,069.24</b> 7,382.788 1,739.0	<b>95,125.80</b> 25,432.956 1,310.0	---	<b>119,182.97</b> 7,157.697 17,939.0
	2007: 2007	<b>161,223.99</b> 42,168.091 1,392.0	<b>173,753.54</b> 58,580.438 1,059.0	<b>139,165.24</b> 10,676.096 9,285.0	<b>83,108.51</b> 15,277.711 766.0	<b>112,731.90</b> 13,410.223 1,486.0	<b>69,944.12</b> 7,459.633 621.0	<b>73,647.54</b> 10,212.561 1,523.0	---	<b>129,392.47</b> 8,363.420 16,132.0
	2008: 2008	<b>148,667.20</b> 46,527.715 1,655.0	<b>129,313.79</b> 28,540.669 1,262.0	<b>135,607.15</b> 11,259.157 11,937.0	<b>102,686.94</b> 29,772.201 919.0	<b>110,429.96</b> 9,014.587 1,488.0	<b>83,066.80</b> 10,938.043 1,286.0	<b>64,236.87</b> 9,265.293 1,828.0	---	<b>123,235.28</b> 7,922.705 20,375.0
	2009: 2009	<b>104,480.54</b> 26,169.724 1,604.0	<b>85,964.07</b> 19,096.980 1,047.0	<b>167,323.70</b> 12,305.580 11,646.0	<b>95,872.77</b> 22,424.767 1,010.0	<b>102,032.77</b> 8,710.278 2,103.0	<b>73,539.93</b> 9,107.497 1,365.0	<b>80,146.52</b> 17,193.048 1,552.0	---	<b>134,915.08</b> 8,036.190 20,327.0
	2010: 2010	<b>124,042.00</b> 23,827.375 1,962.0	<b>192,076.02</b> 43,775.280 1,718.0	<b>149,120.10</b> 10,664.588 13,751.0	<b>57,914.24</b> 10,724.942 681.0	<b>95,521.72</b> 9,870.727 1,856.0	<b>68,872.88</b> 14,416.041 1,499.0	<b>82,451.15</b> 7,871.248 1,701.0	---	<b>133,120.05</b> 7,724.660 23,168.0
	2011: 2011	<b>103,913.32</b> 27,983.963 1,257.0	<b>185,455.97</b> 43,145.721 1,524.0	<b>135,879.58</b> 10,729.783 15,157.0	<b>90,003.88</b> 15,277.235 1,520.0	<b>115,325.93</b> 7,182.399 3,292.0	<b>73,894.50</b> 11,732.481 1,054.0	<b>109,764.31</b> 20,988.836 1,145.0	<b>48,000.00</b> ---	<b>127,717.63</b> 7,452.627 25,029.0
	2012: 2012	<b>124,461.61</b> 34,722.211 2,025.0	<b>180,828.47</b> 56,546.064 2,041.0	<b>142,587.68</b> 10,253.654 14,041.0	<b>78,438.46</b> 16,656.231 1,503.0	<b>116,507.79</b> 9,597.899 1,876.0	<b>77,415.06</b> 7,971.040 1,345.0	<b>89,663.06</b> 12,137.850 1,351.0	<b>25,000.00</b> ---	<b>131,165.36</b> 8,250.423 24,305.0
	2013: 2013	<b>182,829.10</b> 44,731.517 1,780.0	<b>140,787.40</b> 24,931.276 1,772.0	<b>154,016.17</b> 10,982.825 14,292.0	<b>76,087.93</b> 7,168.111 1,408.0	<b>100,004.73</b> 8,883.305 2,407.0	<b>84,854.38</b> 13,765.711 1,716.0	<b>128,665.37</b> 21,276.713 2,511.0	---	<b>138,787.07</b> 7,482.944 25,886.0
	2014: 2014	<b>135,090.91</b> 29,566.419 2,266.0	<b>173,666.71</b> 32,151.036 2,523.0	<b>150,971.23</b> 9,386.930 17,809.0	<b>61,424.99</b> 9,051.660 1,876.0	<b>103,647.79</b> 6,904.026 2,538.0	<b>68,098.45</b> 5,212.337 2,007.0	<b>103,649.19</b> 8,272.292 1,358.0	---	<b>134,596.71</b> 6,722.092 30,377.0
	<b>COL TOTAL</b>	<b>130,149.03</b> 8,734.046 24,871.0	<b>149,684.11</b> 11,243.065 18,975.0	<b>140,896.08</b> 3,168.391 169,276.0	<b>72,438.33</b> 4,714.307 13,346.0	<b>97,656.71</b> 2,626.051 25,254.0	<b>69,506.85</b> 2,902.419 16,992.0	<b>81,757.69</b> 4,184.688 22,138.0	<b>34,064.04</b> 11,239.043 203.0	<b>124,919.44</b> 2,224.347 291,055.0

Color coding:	<-1.0	<-0.5	<0.0	>0.0	>0.5	>1.0	Z
Mean in each cell:	Smaller than average			Larger than average			

Chart for race = 6(Other Asian or Pacific Islander)

### Mean of Total personal income BY Census year BY Class of worker



■ Self-employed, not incorporated 
 ■ Self-employed, incorporated 
 ■ Wage/salary, private  
■ Wage/salary at non-profit 
 ■ Federal gov employee 
 ■ State gov employee 
 ■ Local gov employee  
■ Unpaid family worker

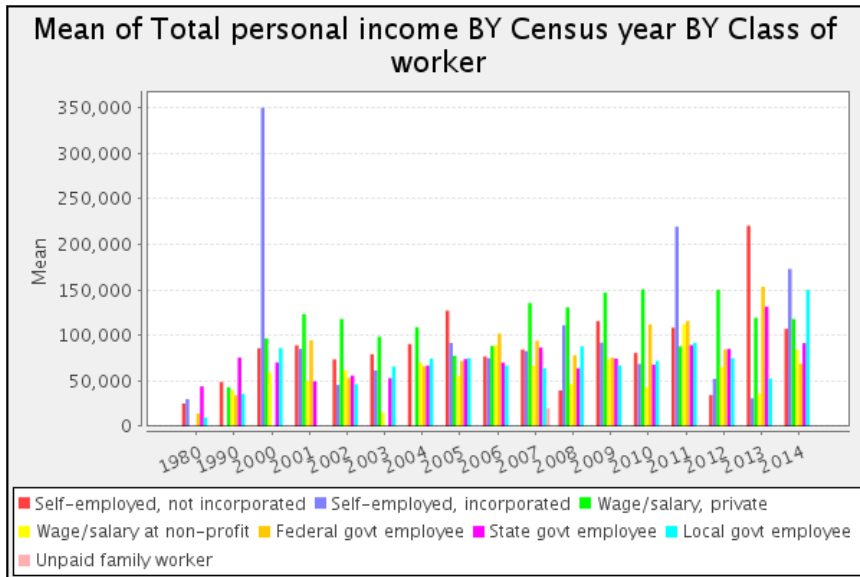
#### Statistics for race = 7(Other race, nec)

Cells contain: -Means -SRS Std Errs -Weighted N		classwkrd								ROW TOTAL
		13 Self- employed, not incorporated	14 Self- employed, incorporated	22 Wage/salary, private	23 Wage/salary at non-profit	25 Federal govt employee	27 State govt employee	28 Local govt employee	29 Unpaid family worker	
year	1980: 1980	25,157.50 5,152.500 200.0	30,005.00 ---	---	---	14,005.00 ---	43,910.00 ---	9,815.00 ---	---	24,675.00 5,120.627 600.0
	1990: 1990	48,665.50 28,206.077 282.0	---	43,012.80 7,929.662 1,555.0	39,506.00 13,494.000 270.0	34,188.39 8,295.385 235.0	75,500.00 ---	35,808.16 6,159.053 662.0	---	42,041.73 5,093.703 3,102.0
	2000: 2000	85,856.30 23,176.828 708.0	350,000.00 ---	96,634.64 18,562.127 1,980.0	59,053.42 19,131.873 161.0	---	70,244.66 9,568.679 421.0	86,000.00 ---	---	100,578.52 14,680.714 3,546.0
	2001: 2001	88,993.03 29,773.624 1,368.0	85,000.00 ---	123,349.78 29,206.443 2,806.0	50,000.00 ---	94,500.00 ---	49,404.93 7,267.279 2,160.0	---	---	89,223.44 14,850.337 7,000.0
	2002: 2002	73,561.35 63,234.547 1,573.0	45,500.00 ---	117,914.79 29,099.638 2,035.0	61,963.37 4,937.065 1,043.0	53,000.00 ---	55,749.18 10,071.990 610.0	46,386.06 11,850.812 649.0	---	77,477.73 14,313.206 6,916.0
	2003: 2003	79,218.90 34,063.177 1,255.0	61,583.69 11,858.306 748.0	98,528.93 19,672.617 2,983.0	15,000.00 ---	---	52,928.08 4,272.701 584.0	65,785.02 42,436.652 1,242.0	---	77,071.36 11,474.907 7,247.0
	2004: 2004	90,437.77 43,245.521 1,435.0	---	108,770.62 16,967.652 4,397.0	70,161.30 16,823.746 553.0	66,000.00 ---	66,753.86 20,336.635 414.0	74,211.46 16,876.652 1,417.0	---	93,200.59 11,022.118 8,727.0
	2005: 2005	127,149.80 30,226.114 1,474.0	91,608.24 20,485.780 1,141.0	77,411.97 10,290.299 3,693.0	55,468.97 24,816.139 145.0	71,720.36 8,216.283 776.0	73,851.41 10,175.016 915.0	74,889.11 16,056.716 1,028.0	---	85,704.78 7,557.488 9,172.0
	2006: 2006	76,698.67 17,217.027 1,948.0	74,907.15 45,051.256 713.0	88,234.33 11,147.017 5,309.0	89,259.18 19,400.682 901.0	101,978.63 17,439.061 936.0	70,058.14 8,832.853 2,150.0	66,841.60 8,924.546 810.0	---	82,391.72 6,154.435 12,767.0
	2007: 2007	84,379.19 9,318.888 1,696.0	82,691.13 17,725.052 1,262.0	135,400.90 26,441.351 3,962.0	66,559.39 14,584.934 426.0	93,966.77 15,847.534 678.0	86,579.51 12,769.632 815.0	63,960.32 9,004.091 2,142.0	20,000.00 ---	97,691.61 10,006.083 11,120.0
	2008: 2008	39,432.30 13,747.547 486.0	111,044.91 26,214.575 334.0	130,707.47 25,246.975 3,640.0	46,640.26 13,220.641 780.0	78,176.12 19,306.709 335.0	63,818.02 11,195.915 1,186.0	87,969.61 36,381.844 1,103.0	---	97,573.16 12,943.559 7,864.0
	2009: 2009	115,594.59 45,109.292 555.0	91,972.23 25,419.555 1,343.0	146,845.54 24,200.416 3,983.0	73,720.30 13,761.215 665.0	75,513.91 10,992.806 302.0	74,352.56 19,976.934 624.0	67,008.94 8,227.371 1,195.0	---	112,018.04 12,369.386 8,667.0

2010: 2010	<b>80,784.06</b> 28,252.411 778.0	<b>68,566.77</b> 32,395.881 677.0	<b>150,328.63</b> 23,144.640 4,000.0	<b>43,000.00</b> ---	<b>111,989.71</b> 14,688.132 480.0	<b>67,738.36</b> 7,488.647 636.0	<b>71,763.56</b> 21,711.822 472.0	---	<b>118,634.82</b> 13,307.231 7,119.0
2011: 2011	<b>108,416.56</b> 31,840.078 1,048.0	<b>219,324.21</b> 49,344.767 1,357.0	<b>87,877.94</b> 11,156.567 2,109.0	<b>112,093.10</b> 55,389.588 348.0	<b>115,943.32</b> 18,558.518 734.0	<b>89,190.05</b> 23,061.295 563.0	<b>91,810.61</b> 17,702.575 603.0	---	<b>122,192.35</b> 13,149.674 6,762.0
2012: 2012	<b>34,366.25</b> 10,125.453 800.0	<b>52,228.23</b> 14,024.895 333.0	<b>149,956.31</b> 24,333.829 3,161.0	<b>65,378.13</b> 12,814.243 855.0	<b>84,617.03</b> 10,103.568 552.0	<b>84,959.28</b> 11,773.864 442.0	<b>74,812.86</b> 29,192.954 941.0	---	<b>102,972.15</b> 13,053.868 7,084.0
2013: 2013	<b>220,423.49</b> 66,078.323 281.0	<b>30,877.17</b> 22,498.328 400.0	<b>119,255.44</b> 23,854.170 3,582.0	<b>36,000.00</b> ---	<b>153,254.90</b> 18,055.767 408.0	<b>131,502.99</b> 32,334.876 468.0	<b>52,653.06</b> 21,507.024 588.0	---	<b>112,145.12</b> 15,509.947 5,914.0
2014: 2014	<b>107,134.88</b> 32,253.637 1,468.0	<b>172,913.15</b> 85,548.966 806.0	<b>117,884.07</b> 16,604.956 4,206.0	<b>84,022.36</b> 14,189.974 331.0	<b>68,803.74</b> 5,304.625 214.0	<b>91,404.32</b> 16,170.664 834.0	<b>149,832.21</b> 40,224.708 596.0	---	<b>118,335.78</b> 12,263.160 8,455.0
<b>COL TOTAL</b>	<b>88,310.25</b> 7,416.045 17,355.0	<b>108,856.59</b> 12,792.918 9,802.0	<b>115,195.71</b> 5,365.130 53,401.0	<b>64,304.42</b> 5,623.499 7,429.0	<b>87,166.76</b> 5,176.693 7,250.0	<b>70,668.08</b> 3,673.551 13,020.0	<b>71,486.29</b> 5,632.968 13,666.0	<b>20,000.00</b> ---	<b>96,350.13</b> 2,933.557 122,062.0

<b>Color coding:</b>	<-1.0	<-0.5	<0.0	>0.0	>0.5	>1.0	Z
<b>Mean in each cell:</b>	Smaller than average			Larger than average			

Chart for race = 7(Other race, nec)

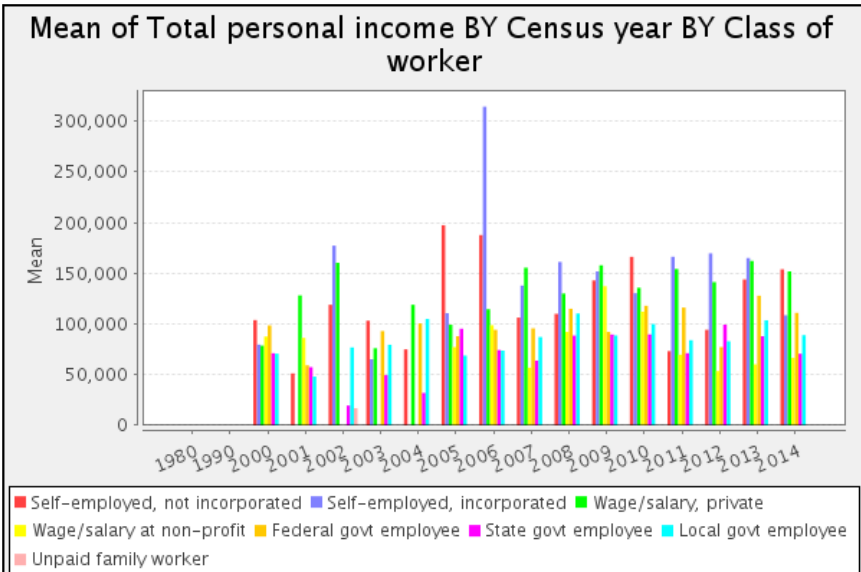


Statistics for race = 8(Two major races)										
Cells contain: -Means -SRS Std Errs -Weighted N		classwkrd								ROW TOTAL
		13 Self-employed, not incorporated	14 Self-employed, incorporated	22 Wage/salary, private	23 Wage/salary at non-profit	25 Federal govt employee	27 State govt employee	28 Local govt employee	29 Unpaid family worker	
2000: 2000	<b>103,898.94</b> 20,164.460 1,738.0	<b>79,687.02</b> 11,750.958 1,049.0	<b>78,704.49</b> 12,659.670 2,881.0	<b>87,670.22</b> 17,465.266 460.0	<b>98,631.58</b> 4,415.410 171.0	<b>71,197.25</b> 8,000.174 910.0	<b>70,792.50</b> 17,756.782 613.0	---	<b>83,903.77</b> 7,115.180 7,822.0	
2001: 2001	<b>51,313.33</b> 22,625.707 983.0	---	<b>128,263.59</b> 28,223.519 3,266.0	<b>86,287.62</b> 18,629.652 265.0	<b>59,302.16</b> 11,391.922 2,404.0	<b>57,465.12</b> 10,423.919 258.0	<b>48,142.28</b> 5,226.922 1,646.0	---	<b>82,616.94</b> 12,994.477 8,822.0	
2002: 2002	<b>119,029.40</b> 26,918.672 2,041.0	<b>177,337.17</b> 79,681.131 635.0	<b>160,368.34</b> 30,794.885 4,666.0	---	---	<b>19,616.22</b> 5,968.273 555.0	<b>76,926.77</b> 5,517.329 269.0	<b>17,000.00</b> ---	<b>133,901.48</b> 20,092.722 8,525.0	
2003: 2003	<b>103,312.50</b> 51,449.877 432.0	<b>65,255.83</b> 11,539.484 815.0	<b>76,114.94</b> 12,809.252 4,074.0	---	<b>93,091.57</b> 17,052.515 362.0	<b>49,600.00</b> ---	<b>79,558.97</b> 12,302.035 1,222.0	---	<b>77,249.48</b> 7,775.927 7,101.0	

year	2004: 2004	<b>75,059.06</b> 32,374.937 1,859.0	---	<b>119,015.60</b> 18,569.975 6,688.0	---	<b>100,621.63</b> 9,111.377 823.0	<b>32,000.00</b> ---	<b>105,013.91</b> 82,572.451 831.0	---	<b>107,521.69</b> 14,008.417 10,317.0
	2005: 2005	<b>197,542.73</b> 50,342.201 805.0	<b>110,739.26</b> 27,461.713 978.0	<b>99,255.96</b> 10,618.347 3,640.0	<b>77,279.66</b> 5,506.649 118.0	<b>88,033.57</b> 17,968.089 417.0	<b>95,386.30</b> 13,594.893 989.0	<b>68,882.07</b> 8,723.114 1,553.0	---	<b>103,030.18</b> 8,008.376 8,500.0
	2006: 2006	<b>187,809.17</b> 34,702.915 1,200.0	<b>314,483.48</b> 57,773.045 333.0	<b>114,649.39</b> 14,048.931 4,244.0	<b>98,806.01</b> 44,446.208 361.0	<b>94,321.37</b> 3,710.725 342.0	<b>74,346.09</b> 7,133.667 2,001.0	<b>73,801.05</b> 12,324.471 951.0	---	<b>117,000.03</b> 10,225.233 9,432.0
	2007: 2007	<b>106,368.65</b> 31,019.937 1,282.0	<b>137,948.42</b> 40,930.288 481.0	<b>155,600.47</b> 16,652.817 3,457.0	<b>56,946.08</b> 4,553.495 666.0	<b>95,736.07</b> 21,645.026 295.0	<b>63,908.22</b> 14,063.403 805.0	<b>87,200.06</b> 10,788.788 1,162.0	---	<b>117,767.48</b> 9,893.010 8,148.0
	2008: 2008	<b>110,064.70</b> 29,053.336 1,606.0	<b>161,305.44</b> 46,374.438 680.0	<b>130,117.84</b> 16,137.856 4,376.0	<b>92,201.63</b> 24,886.126 491.0	<b>115,095.47</b> 10,020.655 618.0	<b>88,616.67</b> 14,922.595 480.0	<b>110,428.57</b> 22,257.528 399.0	---	<b>122,409.74</b> 10,471.763 8,650.0
	2009: 2009	<b>143,025.04</b> 26,035.461 1,729.0	<b>151,941.31</b> 30,879.431 1,317.0	<b>157,971.89</b> 13,642.983 6,430.0	<b>137,300.73</b> 38,222.557 439.0	<b>92,212.27</b> 11,108.967 797.0	<b>89,640.78</b> 8,149.996 1,133.0	<b>88,742.55</b> 16,626.785 872.0	---	<b>139,645.43</b> 8,757.104 12,717.0
	2010: 2010	<b>166,321.57</b> 38,821.099 1,129.0	<b>130,429.99</b> 22,733.737 1,212.0	<b>135,811.26</b> 10,522.577 8,061.0	<b>112,172.50</b> 30,415.530 531.0	<b>118,006.60</b> 13,885.230 1,293.0	<b>89,757.35</b> 10,478.783 1,001.0	<b>99,960.36</b> 13,336.377 1,554.0	---	<b>128,405.69</b> 7,264.134 14,781.0
	2011: 2011	<b>73,252.14</b> 25,870.993 899.0	<b>166,387.50</b> 43,736.688 827.0	<b>154,280.99</b> 14,527.892 6,302.0	<b>69,749.44</b> 21,652.532 551.0	<b>116,263.29</b> 19,497.319 621.0	<b>71,242.49</b> 12,936.854 1,382.0	<b>84,064.48</b> 10,925.544 1,550.0	---	<b>124,886.54</b> 9,174.759 12,132.0
	2012: 2012	<b>94,334.68</b> 37,206.816 1,152.0	<b>169,750.75</b> 48,389.881 789.0	<b>141,353.34</b> 13,414.750 6,182.0	<b>53,578.52</b> 10,103.314 487.0	<b>77,294.17</b> 19,889.457 738.0	<b>99,337.09</b> 20,065.048 865.0	<b>83,020.08</b> 16,621.567 1,068.0	---	<b>121,813.77</b> 9,359.222 11,281.0
	2013: 2013	<b>144,012.68</b> 36,843.389 1,329.0	<b>165,129.74</b> 32,618.175 1,035.0	<b>162,308.06</b> 13,760.900 8,052.0	<b>60,249.26</b> 10,298.877 540.0	<b>127,939.45</b> 17,152.589 2,100.0	<b>88,021.57</b> 13,561.181 1,150.0	<b>103,701.42</b> 13,202.289 1,624.0	---	<b>141,506.63</b> 8,614.541 15,830.0
	2014: 2014	<b>153,987.99</b> 29,224.031 987.0	<b>108,645.45</b> 28,077.613 1,472.0	<b>151,962.57</b> 13,571.337 7,212.0	<b>66,586.91</b> 13,125.645 544.0	<b>111,088.89</b> 8,380.062 1,872.0	<b>70,699.64</b> 10,327.518 919.0	<b>89,039.90</b> 7,545.198 1,724.0	---	<b>126,987.49</b> 7,534.461 14,730.0
	<b>COL TOTAL</b>	<b>120,422.36</b> 8,389.570 19,171.0	<b>137,572.93</b> 10,310.191 11,623.0	<b>135,980.83</b> 4,038.782 79,531.0	<b>81,478.22</b> 6,583.052 5,453.0	<b>99,294.15</b> 4,643.867 12,853.0	<b>77,038.67</b> 3,643.827 12,760.0	<b>83,576.02</b> 3,733.702 17,038.0	<b>17,000.00</b> ---	<b>118,749.10</b> 2,526.101 158,788.0

Color coding:	<-1.0	<-0.5	<0.0	>0.0	>0.5	>1.0	Z
Mean in each cell:	Smaller than average			Larger than average			

Chart for race = 8(Two major races)



Statistics for race = 9(Three or more major races)

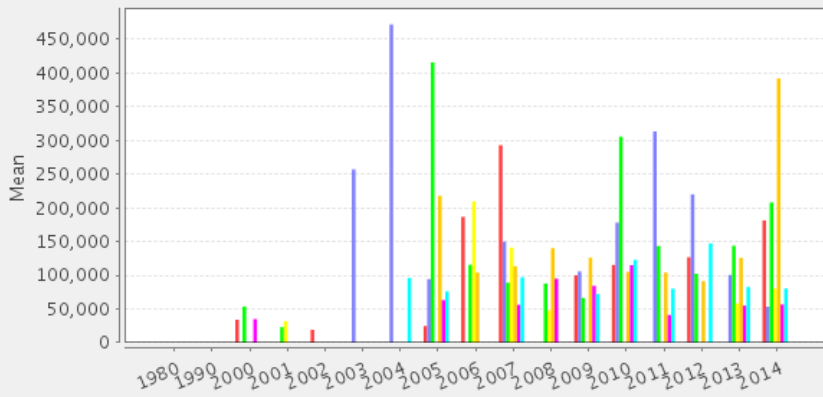
Cells contain: -Means -SRS Std Errs -Weighted N		classwkrd							ROW TOTAL
		13 Self- employed, not incorporated	14 Self- employed, incorporated	22 Wage/salary, private	23 Wage/salary at non-profit	25 Federal govt employee	27 State govt employee	28 Local govt employee	
year	2000: 2000	34,000.00 --- 90.0	---	53,489.95 30,165.663 209.0	---	---	35,000.00 ---	---	43,944.08 13,418.975 422.0
	2001: 2001	---	---	23,000.00 ---	32,000.00 ---	---	---	---	30,147.06 3,639.104 306.0
	2002: 2002	19,000.00 ---	---	---	---	---	---	---	19,000.00 ---
	2003: 2003	---	257,000.00 ---	---	---	---	---	---	257,000.00 ---
	2004: 2004	---	472,000.00 ---	---	---	---	---	96,000.00 ---	261,763.44 186,680.303 372.0
	2005: 2005	24,729.28 27,039.539 181.0	94,300.00 ---	415,800.00 ---	---	218,055.56 78,309.196 108.0	63,094.34 14,999.703 159.0	76,020.00 ---	116,059.35 42,691.889 675.0
	2006: 2006	186,619.14 139,239.997 209.0	---	115,602.39 14,283.909 503.0	209,575.12 144,753.745 217.0	104,000.00 ---	---	---	149,738.77 34,566.235 1,006.0
	2007: 2007	292,884.85 206,572.385 165.0	150,000.00 ---	88,915.44 31,358.490 272.0	141,000.00 ---	113,375.00 4,362.303 200.0	56,200.00 ---	97,000.00 ---	132,470.74 33,761.524 1,063.0
	2008: 2008	---	---	87,689.84 39,047.552 187.0	48,000.00 ---	140,100.00 ---	95,000.00 ---	---	92,795.13 18,772.259 493.0
	2009: 2009	100,000.00 ---	105,594.71 47,495.623 227.0	66,388.67 34,791.031 512.0	---	126,000.00 ---	84,306.59 27,765.842 258.0	72,203.03 11,886.171 165.0	82,611.02 15,111.977 1,325.0
	2010: 2010	115,326.92 88,930.745 208.0	178,100.00 ---	305,625.69 98,520.679 218.0	---	105,098.36 25,176.493 244.0	115,000.00 ---	122,834.34 36,255.894 332.0	153,351.82 30,730.257 1,179.0
	2011: 2011	---	313,380.00 ---	143,449.63 61,905.206 401.0	---	103,961.54 14,844.360 234.0	41,000.00 ---	80,140.85 26,497.035 142.0	130,889.11 28,844.869 907.0
	2012: 2012	126,714.29 30,736.553 371.0	220,000.00 ---	102,170.37 44,208.417 764.0	---	91,222.42 8,908.973 223.0	---	147,229.04 77,521.856 489.0	120,404.20 25,463.706 1,897.0
	2013: 2013	---	100,534.48 24,329.431 464.0	143,796.97 33,805.820 1,189.0	58,000.00 ---	125,849.53 16,934.719 537.0	54,937.28 10,011.928 558.0	82,462.89 13,396.306 114.0	112,208.16 15,727.317 2,938.0
	2014: 2014	181,365.00 139,498.223 100.0	53,281.98 18,414.406 253.0	207,949.54 25,859.135 654.0	80,400.00 ---	392,000.00 ---	56,679.25 11,148.692 159.0	80,424.95 8,537.100 553.0	135,600.02 22,534.525 1,863.0
	<b>COL TOTAL</b>	120,683.22 31,830.057 1,645.0	164,953.24 34,128.748 1,607.0	135,254.78 15,657.236 5,036.0	101,790.68 43,051.059 794.0	129,284.83 13,985.538 1,846.0	65,725.73 7,496.489 1,679.0	103,211.33 17,657.951 2,201.0	121,674.10 8,376.401 14,808.0

Color coding:	<-1.0	<-0.5	<0.0	>0.0	>0.5	>1.0	Z
Mean in each cell:	Smaller than average			Larger than average			

Chart for race = 9(Three or more major races)



### Mean of Total personal income BY Census year BY Class of worker



■ Self-employed, not incorporated 
 ■ Self-employed, incorporated 
 ■ Wage/salary, private  
■ Wage/salary at non-profit 
 ■ Federal gov employee 
 ■ State gov employee 
 ■ Local gov employee  
■ Unpaid family worker

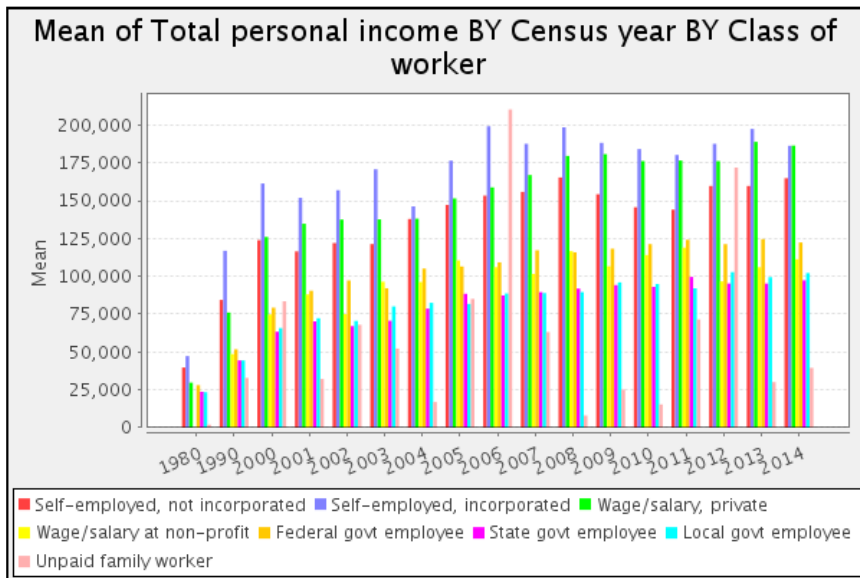
#### Statistics for all valid cases

Cells contain: -Means -SRS Std Errs -Weighted N		classwkrd								ROW TOTAL
		13 Self- employed, not incorporated	14 Self- employed, incorporated	22 Wage/salary, private	23 Wage/salary at non-profit	25 Federal govt employee	27 State govt employee	28 Local govt employee	29 Unpaid family worker	
1980:	<b>39,742.92</b>	<b>47,289.93</b>	<b>29,759.09</b>	---	<b>28,076.47</b>	<b>23,695.61</b>	<b>23,434.98</b>	<b>2,005.00</b>	<b>34,382.09</b>	
1980	555.642	1,180.959	503.241	---	822.926	827.044	802.646	---	326.062	
	177,700.0	35,300.0	151,000.0	.0	28,200.0	23,700.0	25,200.0	100.0	441,200.0	
1990:	<b>84,384.02</b>	<b>116,860.56</b>	<b>76,065.00</b>	<b>48,644.79</b>	<b>51,756.18</b>	<b>44,460.38</b>	<b>44,439.12</b>	<b>32,852.00</b>	<b>77,740.23</b>	
1990	1,263.103	2,637.525	1,113.122	2,565.098	1,667.488	1,201.368	1,172.294	---	718.579	
	185,965.0	73,356.0	281,419.0	18,254.0	28,818.0	33,376.0	37,188.0	105.0	658,481.0	
2000:	<b>123,875.43</b>	<b>161,328.79</b>	<b>125,994.05</b>	<b>74,786.14</b>	<b>79,274.89</b>	<b>63,390.74</b>	<b>65,810.43</b>	<b>83,531.53</b>	<b>119,661.44</b>	
2000	2,331.112	3,885.790	1,944.916	4,165.570	2,214.739	1,669.730	1,778.395	47,791.556	1,203.538	
	199,253.0	106,677.0	328,407.0	20,347.0	34,764.0	46,130.0	45,299.0	333.0	781,210.0	
2001:	<b>116,473.38</b>	<b>151,835.21</b>	<b>134,734.45</b>	<b>88,048.62</b>	<b>90,494.24</b>	<b>70,225.33</b>	<b>72,315.93</b>	<b>32,162.53</b>	<b>121,858.89</b>	
2001	2,458.837	5,118.135	2,807.692	6,805.224	2,853.680	3,132.986	2,245.025	7,998.349	1,601.485	
	181,845.0	106,796.0	343,897.0	22,703.0	30,766.0	44,238.0	52,347.0	443.0	783,035.0	
2002:	<b>121,988.78</b>	<b>156,902.53</b>	<b>137,504.52</b>	<b>75,035.83</b>	<b>97,259.30</b>	<b>67,095.80</b>	<b>70,541.15</b>	<b>67,966.61</b>	<b>124,697.07</b>	
2002	2,798.365	5,644.632	3,074.406	4,685.333	3,555.006	3,134.250	2,806.783	17,431.055	1,748.314	
	181,316.0	113,969.0	330,325.0	18,718.0	41,954.0	48,231.0	45,758.0	1,288.0	781,559.0	
2003:	<b>121,309.87</b>	<b>170,731.07</b>	<b>137,623.70</b>	<b>96,435.78</b>	<b>92,134.03</b>	<b>70,655.64</b>	<b>80,095.97</b>	<b>52,252.06</b>	<b>128,569.27</b>	
2003	2,640.321	5,407.400	2,573.996	8,026.334	2,630.243	2,167.915	2,493.782	44,454.612	1,596.305	
	166,504.0	115,116.0	374,571.0	19,982.0	35,580.0	40,279.0	56,089.0	607.0	808,728.0	
2004:	<b>137,884.34</b>	<b>146,214.79</b>	<b>138,078.35</b>	<b>96,271.93</b>	<b>105,118.38</b>	<b>78,661.23</b>	<b>82,461.64</b>	<b>16,917.65</b>	<b>130,053.81</b>	
2004	3,482.615	3,615.618	2,050.546	7,169.150	3,831.568	3,306.865	3,503.442	12,175.246	1,388.059	
	181,889.0	131,623.0	383,760.0	19,107.0	41,384.0	50,052.0	49,226.0	340.0	857,381.0	
2005:	<b>147,190.17</b>	<b>176,437.89</b>	<b>151,449.92</b>	<b>110,506.06</b>	<b>106,491.04</b>	<b>88,457.02</b>	<b>81,779.83</b>	<b>85,068.85</b>	<b>139,741.47</b>	
2005	2,804.773	3,551.289	1,941.295	7,227.944	2,449.310	1,676.973	2,055.404	23,077.628	1,175.294	
	159,819.0	129,875.0	390,149.0	21,008.0	55,575.0	77,651.0	70,220.0	183.0	904,480.0	

year	2006: 2006	<b>153,316.15</b> 2,917.591 156,377.0	<b>199,146.87</b> 3,977.655 128,720.0	<b>158,750.14</b> 1,948.593 397,976.0	<b>106,032.12</b> 5,694.234 23,396.0	<b>109,246.79</b> 1,964.219 52,344.0	<b>87,364.57</b> 1,925.437 76,230.0	<b>88,677.81</b> 2,253.158 66,648.0	<b>210,232.19</b> 58,760.449 233.0	<b>148,134.63</b> 1,233.244 901,924.0
	2007: 2007	<b>155,796.31</b> 3,056.646 158,255.0	<b>187,548.76</b> 3,895.531 147,142.0	<b>166,909.96</b> 2,105.582 405,656.0	<b>101,585.01</b> 5,154.102 25,606.0	<b>117,205.70</b> 2,023.037 57,121.0	<b>89,539.45</b> 1,803.761 75,267.0	<b>88,941.88</b> 2,154.052 75,862.0	<b>63,192.41</b> 28,498.723 751.0	<b>150,995.17</b> 1,276.510 945,660.0
	2008: 2008	<b>165,323.55</b> 3,347.647 151,845.0	<b>198,439.84</b> 4,265.630 131,884.0	<b>179,552.07</b> 2,175.556 441,066.0	<b>116,609.80</b> 6,458.671 26,648.0	<b>115,873.21</b> 2,091.139 50,270.0	<b>91,880.57</b> 1,768.485 83,036.0	<b>89,582.54</b> 1,993.592 80,288.0	<b>8,000.00</b> --- 76.0	<b>159,798.57</b> 1,351.291 965,113.0
	2009: 2009	<b>154,204.20</b> 3,142.748 141,203.0	<b>188,194.37</b> 4,042.320 135,758.0	<b>180,753.59</b> 2,096.861 445,014.0	<b>106,647.09</b> 5,267.589 29,319.0	<b>118,239.70</b> 2,582.284 56,923.0	<b>94,195.90</b> 1,958.558 79,460.0	<b>96,000.04</b> 2,254.349 86,363.0	<b>25,211.94</b> 4,836.476 201.0	<b>157,454.81</b> 1,290.191 974,241.0
	2010: 2010	<b>145,622.81</b> 2,925.926 140,999.0	<b>184,077.63</b> 3,531.203 129,954.0	<b>176,150.40</b> 2,013.346 426,366.0	<b>114,116.15</b> 5,331.064 25,059.0	<b>121,270.55</b> 2,145.181 56,636.0	<b>93,025.03</b> 1,702.625 88,269.0	<b>94,924.97</b> 2,150.499 75,247.0	<b>15,351.35</b> 4,720.377 185.0	<b>153,433.05</b> 1,204.398 942,715.0
	2011: 2011	<b>144,057.96</b> 3,160.667 136,519.0	<b>180,182.51</b> 3,715.871 141,174.0	<b>176,527.03</b> 2,006.320 442,020.0	<b>118,952.06</b> 5,473.659 28,939.0	<b>124,126.38</b> 2,280.563 65,527.0	<b>99,568.19</b> 2,131.702 86,577.0	<b>92,056.38</b> 1,729.005 73,804.0	<b>71,485.85</b> 26,948.893 212.0	<b>154,023.50</b> 1,224.813 974,772.0
	2012: 2012	<b>159,726.26</b> 3,323.857 145,343.0	<b>187,558.73</b> 3,788.189 143,078.0	<b>176,141.65</b> 1,990.542 438,197.0	<b>96,677.85</b> 4,341.415 32,747.0	<b>121,249.38</b> 2,057.270 63,424.0	<b>95,245.04</b> 1,917.845 79,009.0	<b>102,797.54</b> 2,507.209 74,076.0	<b>171,853.72</b> 126,327.130 484.0	<b>157,027.05</b> 1,244.065 976,358.0
	2013: 2013	<b>159,711.10</b> 3,539.922 131,623.0	<b>197,347.13</b> 4,204.446 139,436.0	<b>188,810.69</b> 2,194.847 460,065.0	<b>105,997.36</b> 4,408.732 32,179.0	<b>124,576.20</b> 2,255.363 60,162.0	<b>95,219.93</b> 1,934.123 87,843.0	<b>99,402.35</b> 2,507.691 75,221.0	<b>30,102.00</b> 2,689.725 469.0	<b>164,301.70</b> 1,355.862 986,998.0
	2014: 2014	<b>164,826.90</b> 3,778.293 123,523.0	<b>186,245.34</b> 3,948.223 143,120.0	<b>186,375.44</b> 2,144.814 488,344.0	<b>111,232.00</b> 4,820.312 33,463.0	<b>122,369.03</b> 2,340.934 60,442.0	<b>97,356.71</b> 1,971.724 85,193.0	<b>102,156.07</b> 2,211.922 68,890.0	<b>39,492.64</b> 13,837.930 367.0	<b>163,947.28</b> 1,349.539 1,003,342.0
	<b>COL TOTAL</b>	<b>132,296.02</b> 708.755 2,719,978.0	<b>174,712.35</b> 1,016.660 2,052,978.0	<b>156,455.39</b> 540.261 6,528,232.0	<b>100,177.73</b> 1,406.357 397,475.0	<b>107,334.11</b> 635.218 819,890.0	<b>85,549.51</b> 527.455 1,104,541.0	<b>85,787.06</b> 585.310 1,057,726.0	<b>65,578.27</b> 14,003.936 6,377.0	<b>139,806.84</b> 326.022 14,687,197.0

<b>Color coding:</b>	<-1.0	<-0.5	<0.0	>0.0	>0.5	>1.0	Z
<b>Mean in each cell:</b>	Smaller than average			Larger than average			

#### Chart for all valid cases



#### Allocation of cases (unweighted)

Valid cases	133,010
Cases excluded by filters or weight	55,617,699
<b>Total cases</b>	<b>55,750,709</b>

#### Datasets

1 /share/htdocs/all\_usa\_samples  
 2 /sda\_support/newvars/all\_usa\_samples

CSM, UC Berkeley

**SDA 3.5: Means**

United States 1850-2014

Jul 21, 2016 (Thu 09:46 PM CDT)

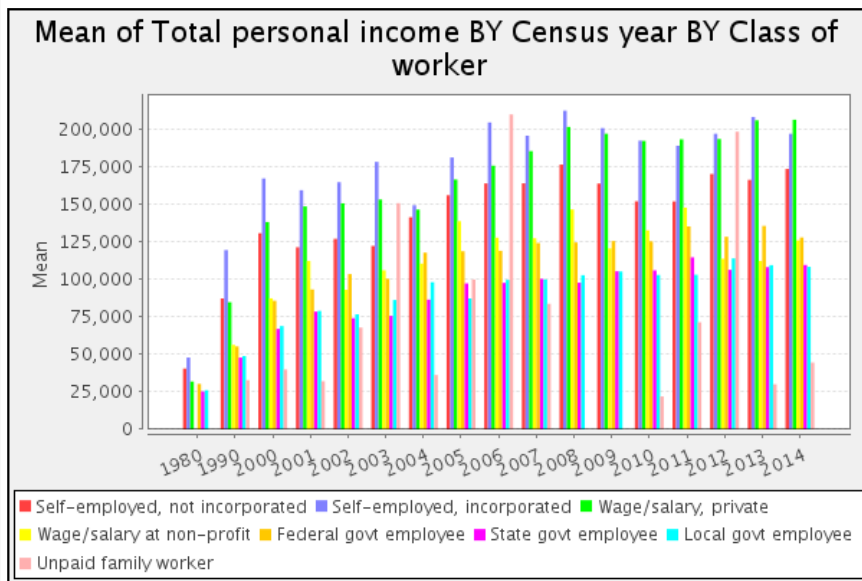
Variables					
Role	Name	Label	Range	MD	Dataset
Dependent	<b>inctot</b>	Total personal income	-20000-9999999		1
Row	<b>year</b>	Census year	1850-2014		1
Column	<b>classwkrd</b>	Class of worker	0-29		1
Control	<b>sex</b>	Sex	1-2		1
Weight	<b>perwt</b>	Person weight	.00-4,044.00		1
Filter	<b>uhrswork(35-99)</b>	Usual hours worked per week	0-99		1
Filter	<b>empstat(1)</b>	Employment status(=Employed)	0-3		1
Filter	<b>occ1990(178)</b>	Occupation, 1990 basis(=Lawyers)	3-999		1

Statistics for sex = 1(Male)										
Cells contain: -Means -SRS Std Errs -Weighted N		classwkrd								ROW TOTAL
		13 Self- employed, not incorporated	14 Self- employed, incorporated	22 Wage/salary, private	23 Wage/salary at non-profit	25 Federal govt employee	27 State govt employee	28 Local govt employee	29 Unpaid family worker	
year	1980: 1980	<b>40,600.51</b> 565.163 170,400.0	<b>47,939.21</b> 1,185.218 34,200.0	<b>31,946.83</b> 564.882 124,800.0	--- --- .0	<b>30,358.96</b> 922.004 20,600.0	<b>25,316.26</b> 913.431 19,000.0	<b>26,164.23</b> 932.536 18,900.0	--- --- .0	<b>36,467.44</b> 349.271 387,900.0
	1990: 1990	<b>87,392.09</b> 1,352.668 164,334.0	<b>119,690.64</b> 2,737.055 68,286.0	<b>84,888.52</b> 1,385.722 204,573.0	<b>56,410.32</b> 3,714.323 10,805.0	<b>55,369.89</b> 2,264.055 19,229.0	<b>47,927.55</b> 1,623.158 20,357.0	<b>48,948.81</b> 1,615.183 22,718.0	<b>32,852.00</b> --- 105.0	<b>85,551.21</b> 849.728 510,407.0
	2000: 2000	<b>130,947.09</b> 2,621.910 163,543.0	<b>167,471.28</b> 4,213.810 92,037.0	<b>138,398.02</b> 2,467.600 232,292.0	<b>87,480.90</b> 7,758.674 9,360.0	<b>85,872.85</b> 2,934.010 19,787.0	<b>67,068.07</b> 2,389.324 24,532.0	<b>68,959.46</b> 2,559.996 27,591.0	<b>40,000.00</b> --- 182.0	<b>131,824.81</b> 1,490.612 569,324.0
	2001: 2001	<b>121,564.86</b> 2,696.411 152,156.0	<b>159,636.37</b> 5,661.987 91,893.0	<b>148,826.32</b> 3,600.672 237,098.0	<b>112,431.91</b> 12,925.294 10,929.0	<b>93,370.50</b> 4,019.487 19,520.0	<b>78,606.19</b> 4,855.551 26,594.0	<b>79,109.40</b> 3,140.486 28,842.0	<b>32,162.53</b> 7,998.349 443.0	<b>133,733.55</b> 1,993.415 567,475.0
	2002: 2002	<b>127,211.61</b> 3,058.697 150,481.0	<b>164,975.16</b> 6,215.446 99,125.0	<b>150,894.25</b> 4,023.219 227,040.0	<b>93,150.92</b> 7,018.866 9,669.0	<b>103,657.28</b> 5,145.273 24,878.0	<b>74,221.95</b> 4,902.991 27,270.0	<b>76,810.84</b> 3,891.248 26,071.0	<b>67,966.61</b> 17,431.055 1,288.0	<b>136,701.46</b> 2,184.894 565,822.0
	2003: 2003	<b>122,468.96</b> 2,874.743 140,653.0	<b>178,530.86</b> 5,866.875 97,392.0	<b>153,446.49</b> 3,303.883 248,817.0	<b>106,161.08</b> 13,349.877 9,784.0	<b>100,536.51</b> 3,069.346 21,902.0	<b>75,743.82</b> 2,510.802 22,046.0	<b>86,345.27</b> 3,275.480 31,158.0	<b>151,000.00</b> --- 175.0	<b>140,613.14</b> 1,978.537 571,927.0
	2004: 2004	<b>141,595.35</b> 3,856.164 151,709.0	<b>149,572.01</b> 3,813.971 113,669.0	<b>146,711.98</b> 2,488.910 262,703.0	<b>110,635.37</b> 10,738.585 9,972.0	<b>117,954.74</b> 5,870.909 21,980.0	<b>86,597.16</b> 5,470.435 22,150.0	<b>98,237.98</b> 5,484.574 25,601.0	<b>36,262.07</b> 17,348.803 116.0	<b>140,085.36</b> 1,684.139 607,900.0
	2005: 2005	<b>156,275.90</b> 3,141.044 130,004.0	<b>181,481.50</b> 3,815.007 112,343.0	<b>166,780.65</b> 2,532.354 258,182.0	<b>138,967.25</b> 11,438.050 9,204.0	<b>118,891.66</b> 3,781.303 31,273.0	<b>97,423.91</b> 2,411.574 44,653.0	<b>87,408.89</b> 2,963.083 40,218.0	<b>100,000.00</b> --- 129.0	<b>154,375.78</b> 1,489.785 626,006.0
	2006: 2006	<b>164,194.10</b> 3,260.349 128,715.0	<b>204,861.45</b> 4,309.604 111,975.0	<b>176,003.78</b> 2,518.271 270,643.0	<b>127,949.41</b> 9,498.051 11,776.0	<b>119,169.57</b> 2,816.366 29,373.0	<b>97,776.12</b> 2,920.610 43,438.0	<b>99,742.79</b> 3,466.812 37,427.0	<b>210,232.19</b> 58,760.449 233.0	<b>165,321.11</b> 1,563.453 633,580.0
	2007: 2007	<b>164,241.07</b> 3,448.609 130,010.0	<b>196,024.63</b> 4,345.164 124,150.0	<b>185,758.24</b> 2,785.908 265,045.0	<b>127,564.74</b> 10,333.212 11,278.0	<b>124,371.85</b> 2,933.236 32,316.0	<b>100,444.61</b> 2,545.593 43,722.0	<b>100,034.99</b> 3,270.542 42,081.0	<b>83,842.97</b> 34,299.541 505.0	<b>167,961.77</b> 1,649.663 649,107.0
2008:	<b>176,736.05</b> 3,789.034	<b>212,728.73</b> 4,779.158	<b>201,869.39</b> 2,856.517	<b>146,829.73</b> 12,063.649	<b>124,731.25</b> 2,743.732	<b>97,894.45</b> 2,123.861	<b>102,914.67</b> 3,029.636	--- ---	<b>180,361.29</b> 1,753.702	

2008	121,386.0	107,751.0	286,051.0	11,393.0	28,507.0	45,431.0	45,006.0	.0	645,525.0
2009:	<b>164,079.75</b>	<b>201,094.05</b>	<b>197,347.51</b>	<b>120,744.21</b>	<b>125,689.65</b>	<b>105,551.89</b>	<b>105,398.01</b>	---	<b>174,863.49</b>
2009	3,549.382	4,545.192	2,662.117	8,235.838	3,731.704	2,788.964	3,722.402	---	1,656.702
	112,921.0	111,647.0	300,290.0	14,719.0	32,061.0	43,674.0	44,084.0	.0	659,396.0
2010:	<b>152,236.27</b>	<b>192,724.42</b>	<b>192,554.97</b>	<b>132,808.94</b>	<b>125,488.43</b>	<b>106,127.93</b>	<b>103,090.33</b>	<b>22,000.00</b>	<b>168,827.30</b>
2010	3,268.188	3,916.033	2,624.861	8,117.257	2,695.919	2,578.930	2,904.670	---	1,550.170
	116,752.0	107,537.0	283,441.0	11,318.0	30,932.0	46,806.0	40,558.0	62.0	637,406.0
2011:	<b>152,150.07</b>	<b>189,314.15</b>	<b>193,583.36</b>	<b>148,000.37</b>	<b>135,477.40</b>	<b>114,829.40</b>	<b>103,227.26</b>	<b>71,485.85</b>	<b>170,474.05</b>
2011	3,639.336	4,206.488	2,570.246	10,437.219	3,372.544	3,127.035	2,635.060	26,948.893	1,584.957
	106,746.0	113,274.0	289,037.0	12,815.0	37,382.0	46,691.0	39,291.0	212.0	645,448.0
2012:	<b>170,486.00</b>	<b>197,321.96</b>	<b>193,799.08</b>	<b>113,898.09</b>	<b>128,552.46</b>	<b>106,480.50</b>	<b>114,139.78</b>	<b>198,690.91</b>	<b>174,668.24</b>
2012	3,844.765	4,239.532	2,600.075	8,287.173	2,876.929	2,865.653	3,834.489	154,254.898	1,628.148
	112,344.0	118,702.0	282,491.0	12,988.0	35,157.0	42,214.0	38,729.0	407.0	643,032.0
2013:	<b>166,556.48</b>	<b>208,509.26</b>	<b>206,276.18</b>	<b>112,426.25</b>	<b>135,817.72</b>	<b>108,276.73</b>	<b>109,631.26</b>	<b>30,102.00</b>	<b>182,295.04</b>
2013	4,024.677	4,780.521	2,840.245	7,238.377	3,569.868	3,087.519	3,979.165	2,689.725	1,783.152
	102,933.0	113,719.0	300,201.0	14,216.0	31,932.0	43,760.0	38,154.0	469.0	645,384.0
2014:	<b>173,823.72</b>	<b>197,323.61</b>	<b>206,648.17</b>	<b>126,129.03</b>	<b>128,086.06</b>	<b>109,741.57</b>	<b>108,462.94</b>	<b>44,600.00</b>	<b>182,238.89</b>
2014	4,336.639	4,441.396	2,827.657	8,106.037	3,336.249	2,821.872	3,191.536	---	1,774.226
	95,463.0	115,664.0	310,571.0	16,178.0	33,303.0	42,095.0	36,798.0	323.0	650,395.0
<b>COL TOTAL</b>	<b>137,181.26</b>	<b>182,190.20</b>	<b>170,667.82</b>	<b>117,444.23</b>	<b>113,747.81</b>	<b>94,357.06</b>	<b>93,559.76</b>	<b>80,293.50</b>	<b>152,697.24</b>
	789.511	1,123.381	696.017	2,395.980	906.919	771.998	870.279	18,466.317	413.990
	2,250,550.0	1,733,364.0	4,383,275.0	186,404.0	470,132.0	604,433.0	583,227.0	4,649.0	10,216,034.0

<b>Color coding:</b>	<-1.0	<-0.5	<0.0	>0.0	>0.5	>1.0	Z
<b>Mean in each cell:</b>	Smaller than average			Larger than average			

Chart for sex = 1(Male)



Statistics for sex = 2(Female)										
Cells contain: -Means -SRS Std Errs -Weighted N		classwkrd								ROW TOTAL
		13 Self-employed, not incorporated	14 Self-employed, incorporated	22 Wage/salary, private	23 Wage/salary at non-profit	25 Federal govt employee	27 State govt employee	28 Local govt employee	29 Unpaid family worker	
1980: 1980	19,724.52 1,796.253 7,300.0	27,103.18 6,636.651 1,100.0	19,338.09 820.545 26,200.0	---	21,889.74 1,554.944 7,600.0	17,144.04 1,634.988 4,700.0	15,247.22 1,039.265 6,300.0	2,005.00 ---	19,205.58 576.882 53,300.0	
1990: 1990	61,531.23 3,101.440 21,631.0	78,743.20 8,178.952 5,070.0	52,575.76 1,382.015 76,846.0	37,380.65 2,749.371 7,449.0	44,509.54 1,928.818 9,589.0	39,039.00 1,637.673 13,019.0	37,358.87 1,440.980 14,470.0	---	50,816.01 969.049 148,074.0	
2000: 2000	91,488.98 4,608.994	122,712.97 9,358.080	96,015.97 2,679.488	63,971.27 3,499.253	70,557.93 3,234.807	59,213.85 2,271.805	60,903.90 2,155.604	136,000.00 ---	86,979.25 1,687.607	



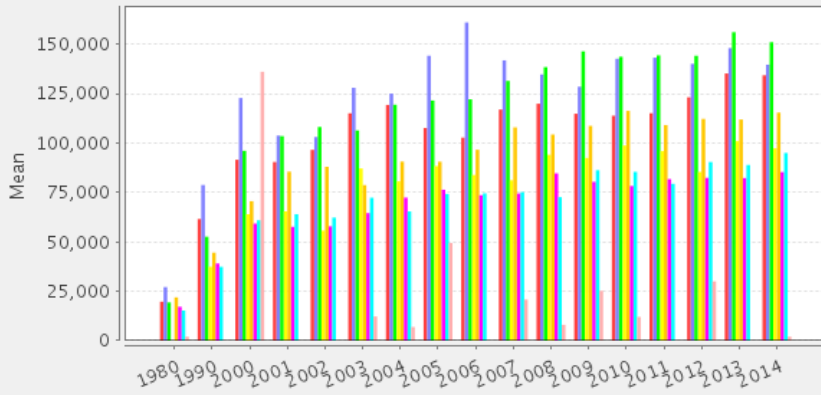
	35,710.0	14,640.0	96,115.0	10,987.0	14,977.0	21,598.0	17,708.0	151.0	211,886.0
2001: 2001	<b>90,379.56</b> 5,489.768 29,689.0	<b>103,732.71</b> 9,700.738 14,903.0	<b>103,449.94</b> 3,856.691 106,799.0	<b>65,415.27</b> 4,754.825 11,774.0	<b>85,501.84</b> 3,769.830 11,246.0	<b>57,593.24</b> 2,301.034 17,644.0	<b>63,979.95</b> 3,008.132 23,505.0	---	<b>90,598.14</b> 2,242.710 215,560.0
2002: 2002	<b>96,500.30</b> 6,509.050 30,835.0	<b>102,995.31</b> 10,553.191 14,844.0	<b>108,071.34</b> 3,997.740 103,285.0	<b>55,679.58</b> 4,201.468 9,049.0	<b>87,938.10</b> 4,474.412 17,076.0	<b>57,824.76</b> 2,818.860 20,961.0	<b>62,238.37</b> 3,716.331 19,687.0	---	<b>93,212.68</b> 2,404.370 215,737.0
2003: 2003	<b>115,003.35</b> 6,674.249 25,851.0	<b>127,871.85</b> 12,993.759 17,724.0	<b>106,316.70</b> 3,638.321 125,754.0	<b>87,105.29</b> 9,066.585 10,198.0	<b>78,679.51</b> 4,361.474 13,678.0	<b>64,503.39</b> 3,668.496 18,233.0	<b>72,285.79</b> 3,717.938 24,931.0	<b>12,250.00</b> 1,799.305 432.0	<b>99,480.66</b> 2,393.239 236,801.0
2004: 2004	<b>119,229.81</b> 7,901.400 30,180.0	<b>124,959.84</b> 10,624.958 17,954.0	<b>119,342.71</b> 3,478.016 121,057.0	<b>80,592.44</b> 8,997.355 9,135.0	<b>90,577.92</b> 4,349.854 19,404.0	<b>72,361.29</b> 3,991.474 27,902.0	<b>65,365.76</b> 3,520.074 23,625.0	<b>6,900.00</b> ---	<b>105,610.36</b> 2,276.984 249,481.0
2005: 2005	<b>107,573.17</b> 5,721.864 29,815.0	<b>144,119.03</b> 9,416.848 17,532.0	<b>121,456.66</b> 2,710.221 131,967.0	<b>88,313.85</b> 8,747.723 11,804.0	<b>90,533.32</b> 2,467.904 24,302.0	<b>76,323.01</b> 2,079.804 32,998.0	<b>74,234.01</b> 2,690.697 30,002.0	<b>49,400.00</b> ---	<b>106,843.73</b> 1,676.368 278,474.0
2006: 2006	<b>102,699.57</b> 5,667.796 27,662.0	<b>160,933.05</b> 9,881.678 16,745.0	<b>122,078.00</b> 2,635.248 127,333.0	<b>83,820.58</b> 5,658.157 11,620.0	<b>96,558.54</b> 2,427.166 22,971.0	<b>73,572.88</b> 1,956.473 32,792.0	<b>74,505.50</b> 2,407.231 29,221.0	---	<b>107,556.07</b> 1,650.430 268,344.0
2007: 2007	<b>116,925.61</b> 5,959.308 28,245.0	<b>141,781.53</b> 7,914.494 22,992.0	<b>131,381.87</b> 2,810.037 140,611.0	<b>81,135.59</b> 3,724.452 14,328.0	<b>107,869.64</b> 2,595.818 24,805.0	<b>74,424.68</b> 2,198.901 31,545.0	<b>75,123.18</b> 2,379.653 33,781.0	<b>20,800.00</b> ---	<b>113,858.02</b> 1,690.080 296,553.0
2008: 2008	<b>119,842.18</b> 6,501.584 30,459.0	<b>134,641.62</b> 8,325.825 24,133.0	<b>138,369.66</b> 2,955.554 155,015.0	<b>94,040.44</b> 6,289.197 15,255.0	<b>104,270.20</b> 3,082.913 21,763.0	<b>84,615.12</b> 2,908.781 37,605.0	<b>72,575.96</b> 2,073.871 35,282.0	<b>8,000.00</b> ---	<b>118,264.63</b> 1,812.182 319,588.0
2009: 2009	<b>114,774.29</b> 6,235.149 28,282.0	<b>128,461.87</b> 7,580.710 24,111.0	<b>146,322.61</b> 3,131.961 144,724.0	<b>92,435.06</b> 6,345.227 14,600.0	<b>108,632.56</b> 3,335.467 24,862.0	<b>80,336.79</b> 2,533.090 35,786.0	<b>86,200.84</b> 2,365.880 42,279.0	<b>25,211.94</b> 4,836.476 201.0	<b>120,994.92</b> 1,802.633 314,845.0
2010: 2010	<b>113,778.28</b> 6,142.842 24,247.0	<b>142,597.96</b> 7,630.728 22,417.0	<b>143,617.76</b> 2,814.003 142,925.0	<b>98,719.53</b> 6,846.219 13,741.0	<b>116,194.79</b> 3,426.037 25,704.0	<b>78,233.67</b> 1,928.446 41,463.0	<b>85,378.12</b> 3,128.016 34,689.0	<b>12,000.00</b> ---	<b>121,293.85</b> 1,693.805 305,309.0
2011: 2011	<b>115,045.07</b> 6,012.895 29,773.0	<b>143,108.04</b> 7,476.736 27,900.0	<b>144,301.82</b> 2,985.934 152,983.0	<b>95,865.10</b> 4,620.107 16,124.0	<b>109,050.02</b> 2,607.009 28,145.0	<b>81,703.25</b> 2,594.564 39,886.0	<b>79,338.99</b> 1,960.620 34,513.0	---	<b>121,781.77</b> 1,733.653 329,324.0
2012: 2012	<b>123,095.07</b> 6,111.140 32,999.0	<b>140,015.46</b> 7,592.478 24,376.0	<b>144,106.50</b> 2,833.633 155,706.0	<b>85,358.63</b> 4,561.645 19,759.0	<b>112,166.18</b> 2,838.948 28,267.0	<b>82,354.87</b> 2,303.892 36,795.0	<b>90,370.08</b> 3,049.040 35,347.0	<b>30,000.00</b> ---	<b>122,994.75</b> 1,691.205 333,326.0
2013: 2013	<b>135,151.46</b> 7,285.683 28,690.0	<b>147,988.87</b> 7,861.754 25,717.0	<b>156,013.07</b> 3,226.190 159,864.0	<b>100,909.50</b> 5,393.363 17,963.0	<b>111,860.50</b> 2,433.718 28,230.0	<b>82,258.80</b> 2,167.225 44,083.0	<b>88,873.48</b> 2,914.210 37,067.0	---	<b>130,308.32</b> 1,868.493 341,614.0
2014: 2014	<b>134,218.83</b> 7,418.836 28,060.0	<b>139,575.86</b> 8,038.247 27,456.0	<b>150,958.80</b> 3,020.522 177,773.0	<b>97,289.03</b> 5,313.108 17,285.0	<b>115,353.52</b> 3,195.317 27,139.0	<b>85,260.08</b> 2,634.389 43,098.0	<b>94,924.35</b> 2,975.809 32,092.0	<b>2,000.00</b> ---	<b>130,240.33</b> 1,872.455 352,947.0
<b>COL TOTAL</b>	<b>108,875.01</b> 1,544.607 469,428.0	<b>134,157.65</b> 2,216.049 319,614.0	<b>127,411.94</b> 782.536 2,144,957.0	<b>84,929.10</b> 1,520.830 211,071.0	<b>98,713.06</b> 836.729 349,758.0	<b>74,904.66</b> 663.259 500,108.0	<b>76,233.31</b> 720.750 474,499.0	<b>25,988.48</b> 10,219.951 1,728.0	<b>110,353.95</b> 470.617 4,471,163.0

<b>Color coding:</b>	<-1.0	<-0.5	<0.0	>0.0	>0.5	>1.0	Z
<b>Mean in each cell:</b>	Smaller than average			Larger than average			

Chart for sex = 2(Female)



### Mean of Total personal income BY Census year BY Class of worker



■ Self-employed, not incorporated 
 ■ Self-employed, incorporated 
 ■ Wage/salary, private  
■ Wage/salary at non-profit 
 ■ Federal gov employee 
 ■ State gov employee 
 ■ Local gov employee  
■ Unpaid family worker

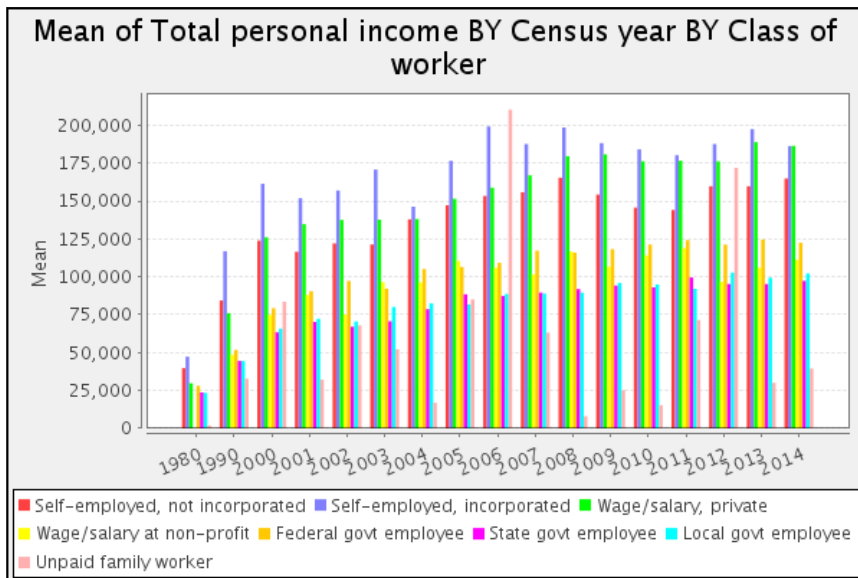
#### Statistics for all valid cases

Cells contain: -Means -SRS Std Errs -Weighted N		classwkrd								ROW TOTAL
		13 Self- employed, not incorporated	14 Self- employed, incorporated	22 Wage/salary, private	23 Wage/salary at non-profit	25 Federal govt employee	27 State govt employee	28 Local govt employee	29 Unpaid family worker	
year	1980: 1980	39,742.92 555.642 177,700.0	47,289.93 1,180.959 35,300.0	29,759.09 503.241 151,000.0	--- --- .0	28,076.47 822.926 28,200.0	23,695.61 827.044 23,700.0	23,434.98 802.646 25,200.0	2,005.00 --- 100.0	34,382.09 326.062 441,200.0
	1990: 1990	84,384.02 1,263.103 185,965.0	116,860.56 2,637.525 73,356.0	76,065.00 1,113.122 281,419.0	48,644.79 2,565.098 18,254.0	51,756.18 1,667.488 28,818.0	44,460.38 1,201.368 33,376.0	44,439.12 1,172.294 37,188.0	32,852.00 --- 105.0	77,740.23 718.579 658,481.0
	2000: 2000	123,875.43 2,331.112 199,253.0	161,328.79 3,885.790 106,677.0	125,994.05 1,944.916 328,407.0	74,786.14 4,165.570 20,347.0	79,274.89 2,214.739 34,764.0	63,390.74 1,669.730 46,130.0	65,810.43 1,778.395 45,299.0	83,531.53 47,791.556 333.0	119,661.44 1,203.538 781,210.0
	2001: 2001	116,473.38 2,458.837 181,845.0	151,835.21 5,118.135 106,796.0	134,734.45 2,807.692 343,897.0	88,048.62 6,805.224 22,703.0	90,494.24 2,853.680 30,766.0	70,225.33 3,132.986 44,238.0	72,315.93 2,245.025 52,347.0	32,162.53 7,998.349 443.0	121,858.89 1,601.485 783,035.0
	2002: 2002	121,988.78 2,798.365 181,316.0	156,902.53 5,644.632 113,969.0	137,504.52 3,074.406 330,325.0	75,035.83 4,685.333 18,718.0	97,259.30 3,555.006 41,954.0	67,095.80 3,134.250 48,231.0	70,541.15 2,806.783 45,758.0	67,966.61 17,431.055 1,288.0	124,697.07 1,748.314 781,559.0
	2003: 2003	121,309.87 2,640.321 166,504.0	170,731.07 5,407.400 115,116.0	137,623.70 2,573.996 374,571.0	96,435.78 8,026.334 19,982.0	92,134.03 2,630.243 35,580.0	70,655.64 2,167.915 40,279.0	80,095.97 2,493.782 56,089.0	52,252.06 44,454.612 607.0	128,569.27 1,596.305 808,728.0
	2004: 2004	137,884.34 3,482.615 181,889.0	146,214.79 3,615.618 131,623.0	138,078.35 2,050.546 383,760.0	96,271.93 7,169.150 19,107.0	105,118.38 3,831.568 41,384.0	78,661.23 3,306.865 50,052.0	82,461.64 3,503.442 49,226.0	16,917.65 12,175.246 340.0	130,053.81 1,388.059 857,381.0
	2005: 2005	147,190.17 2,804.773 159,819.0	176,437.89 3,551.289 129,875.0	151,449.92 1,941.295 390,149.0	110,506.06 7,227.944 21,008.0	106,491.04 2,449.310 55,575.0	88,457.02 1,676.973 77,651.0	81,779.83 2,055.404 70,220.0	85,068.85 23,077.628 183.0	139,741.47 1,175.294 904,480.0
	2006: 2006	153,316.15 2,917.591 156,377.0	199,146.87 3,977.655 128,720.0	158,750.14 1,948.593 397,976.0	106,032.12 5,694.234 23,396.0	109,246.79 1,964.219 52,344.0	87,364.57 1,925.437 76,230.0	88,677.81 2,253.158 66,648.0	210,232.19 58,760.449 233.0	148,134.63 1,233.244 901,924.0
	2007: 2007	155,796.31 3,056.646 158,255.0	187,548.76 3,895.531 147,142.0	166,909.96 2,105.582 405,656.0	101,585.01 5,154.102 25,606.0	117,205.70 2,023.037 57,121.0	89,539.45 1,803.761 75,267.0	88,941.88 2,154.052 75,862.0	63,192.41 28,498.723 751.0	150,995.17 1,276.510 945,660.0
	2008: 2008	165,323.55 3,347.647 151,845.0	198,439.84 4,265.630 131,884.0	179,552.07 2,175.556 441,066.0	116,609.80 6,458.671 26,648.0	115,873.21 2,091.139 50,270.0	91,880.57 1,768.485 83,036.0	89,582.54 1,993.592 80,288.0	8,000.00 --- 76.0	159,798.57 1,351.291 965,113.0
	2009: 2009	154,204.20 3,142.748 141,203.0	188,194.37 4,042.320 135,758.0	180,753.59 2,096.861 445,014.0	106,647.09 5,267.589 29,319.0	118,239.70 2,582.284 56,923.0	94,195.90 1,958.558 79,460.0	96,000.04 2,254.349 86,363.0	25,211.94 4,836.476 201.0	157,454.81 1,290.191 974,241.0

2010: 2010	<b>145,622.81</b> 2,925.926 140,999.0	<b>184,077.63</b> 3,531.203 129,954.0	<b>176,150.40</b> 2,013.346 426,366.0	<b>114,116.15</b> 5,331.064 25,059.0	<b>121,270.55</b> 2,145.181 56,636.0	<b>93,025.03</b> 1,702.625 88,269.0	<b>94,924.97</b> 2,150.499 75,247.0	<b>15,351.35</b> 4,720.377 185.0	<b>153,433.05</b> 1,204.398 942,715.0
2011: 2011	<b>144,057.96</b> 3,160.667 136,519.0	<b>180,182.51</b> 3,715.871 141,174.0	<b>176,527.03</b> 2,006.320 442,020.0	<b>118,952.06</b> 5,473.659 28,939.0	<b>124,126.38</b> 2,280.563 65,527.0	<b>99,568.19</b> 2,131.702 86,577.0	<b>92,056.38</b> 1,729.005 73,804.0	<b>71,485.85</b> 26,948.893 212.0	<b>154,023.50</b> 1,224.813 974,772.0
2012: 2012	<b>159,726.26</b> 3,323.857 145,343.0	<b>187,558.73</b> 3,788.189 143,078.0	<b>176,141.65</b> 1,990.542 438,197.0	<b>96,677.85</b> 4,341.415 32,747.0	<b>121,249.38</b> 2,057.270 63,424.0	<b>95,245.04</b> 1,917.845 79,009.0	<b>102,797.54</b> 2,507.209 74,076.0	<b>171,853.72</b> 126,327.130 484.0	<b>157,027.05</b> 1,244.065 976,358.0
2013: 2013	<b>159,711.10</b> 3,539.922 131,623.0	<b>197,347.13</b> 4,204.446 139,436.0	<b>188,810.69</b> 2,194.847 460,065.0	<b>105,997.36</b> 4,408.732 32,179.0	<b>124,576.20</b> 2,255.363 60,162.0	<b>95,219.93</b> 1,934.123 87,843.0	<b>99,402.35</b> 2,507.691 75,221.0	<b>30,102.00</b> 2,689.725 469.0	<b>164,301.70</b> 1,355.862 986,998.0
2014: 2014	<b>164,826.90</b> 3,778.293 123,523.0	<b>186,245.34</b> 3,948.223 143,120.0	<b>186,375.44</b> 2,144.814 488,344.0	<b>111,232.00</b> 4,820.312 33,463.0	<b>122,369.03</b> 2,340.934 60,442.0	<b>97,356.71</b> 1,971.724 85,193.0	<b>102,156.07</b> 2,211.922 68,890.0	<b>39,492.64</b> 13,837.930 367.0	<b>163,947.28</b> 1,349.539 1,003,342.0
<b>COL TOTAL</b>	<b>132,296.02</b> 708.755 2,719,978.0	<b>174,712.35</b> 1,016.660 2,052,978.0	<b>156,455.39</b> 540.261 6,528,232.0	<b>100,177.73</b> 1,406.357 397,475.0	<b>107,334.11</b> 635.218 819,890.0	<b>85,549.51</b> 527.455 1,104,541.0	<b>85,787.06</b> 585.310 1,057,726.0	<b>65,578.27</b> 14,003.936 6,377.0	<b>139,806.84</b> 326.022 14,687,197.0

Color coding:	<-1.0	<-0.5	<0.0	>0.0	>0.5	>1.0	Z
Mean in each cell:	Smaller than average			Larger than average			

#### Chart for all valid cases



#### Allocation of cases (unweighted)

Valid cases	133,010
Cases excluded by filters or weight	55,617,699
<b>Total cases</b>	<b>55,750,709</b>

#### Datasets

- 1 /share/htdocs/all\_usa\_samples
- 2 /sda\_support/newvars/all\_usa\_samples